

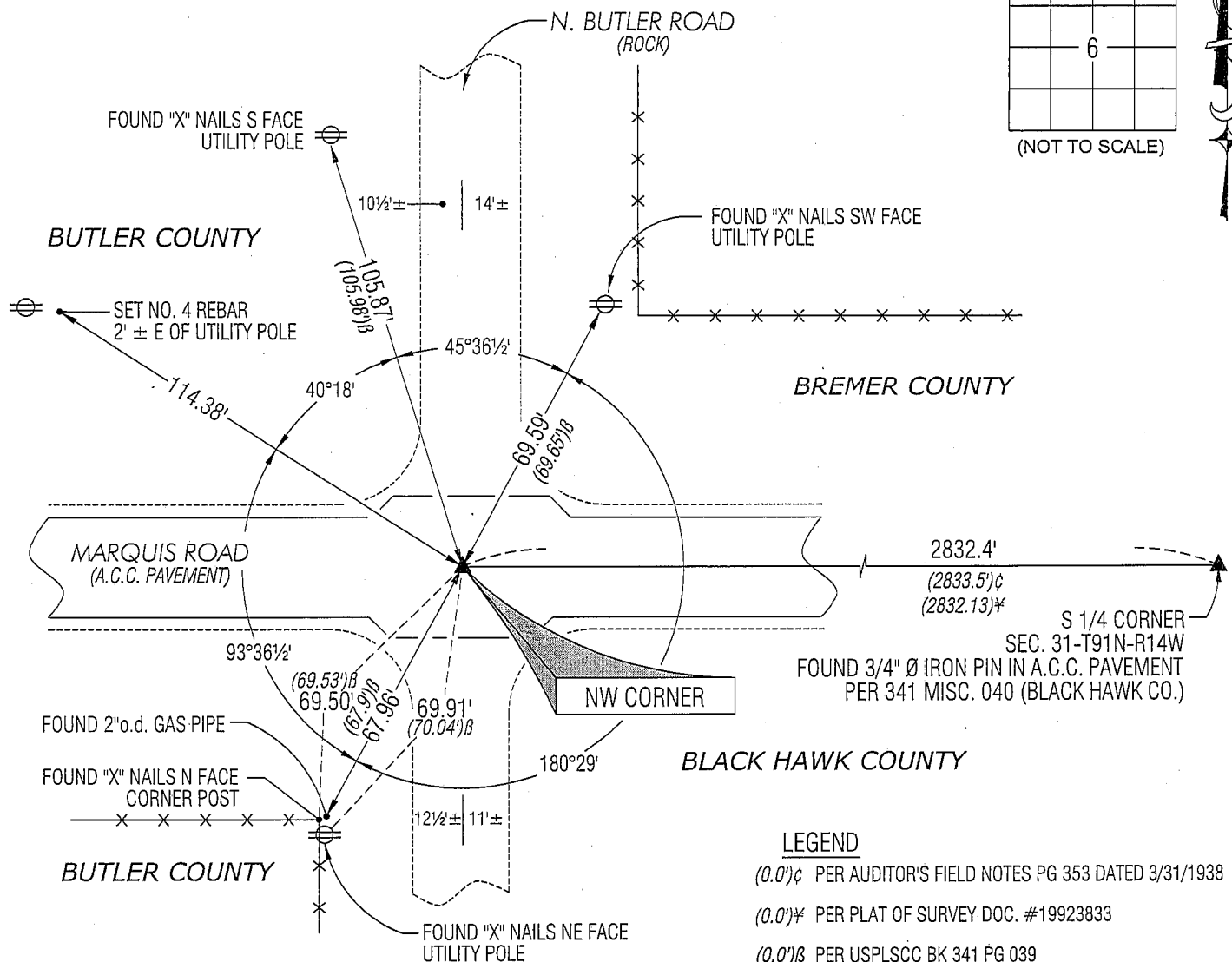
Paul H. Helland, 1107 Technology Parkway, Cedar Falls, Iowa 50613-6951, (319)-266-0161

UNITED STATES PUBLIC LAND SURVEY CORNER CERTIFICATE  
OFLAND SURVEY MONUMENTS SITUATED IN SECTION NO. 6, TOWNSHIP NO. 90 NORTH, RANGE  
NO. 14 WEST OF THE FIFTH PRINCIPAL MERIDIAN, BLACK HAWK COUNTY, IOWA.PREVIOUSLY RECORDED IN BLACK HAWK - BK 341 PG 039.(SHOW REASON FOR PREPARING THIS CERTIFICATE, THE EVIDENCE AND DETAILED PROCEDURES USED IN ESTABLISHING THE  
CORNER POSITIONS AND MONUMENTATION FOUND OR PLACED.)

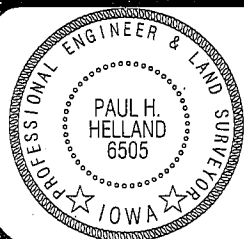
## MONUMENT DESCRIPTION AND REMARKS:

USPLSCC BK 341 PG 39 (BLACK HAWK) MONUMENTATION AND REFERENCE TIES HAVE CHANGED. SURVEY COMPLETED IN  
SW FRL 1/4 & SE 1/4 OF SEC. 31-T91N-R14W.→ NW CORNER: AUDITOR'S FIELD NOTES PG 353 DATED 3/31/1938 CALL FOR (POST IN MOUND, PIT N & S) AND (NAIL IN  
ASPHALT). PLAT OF SURVEY DOC. # 19923833 CALLS FOR (FOUND PIN). USPLSCC BK 341 PG 039 DATED 11/2/2000 CALLS  
FOR (FOUND 1" DIAMETER IRON PIN). FOUND NO. 4 REBAR IN A.C.C. PAVEMENT. CORRESPONDS TO REMAINING TIES  
WITHIN REASON. UTILIZED AS CORNER.

## PLAN VIEW

(SHOW A MINIMUM OF THREE REFERENCE TIES TO DURABLE PHYSICAL OBJECTS, RELEVANT MONUMENTS AND PHYSICAL  
CONDITIONS THAT WILL ENABLE RECOVERY OF THE CORNER.)

## HELLAND ENGINEERING &amp; SURVEYING, LTD.

1107 Technology Parkway  
Cedar Falls, Iowa 50613-6951  
(319)-266-0161SHINER = 8D NAIL & 1 5/16" Ø METAL SHINER  
BRASS TAG = 13/16" Ø BRASS TAG  
OPC = PLASTIC CAP (O=ORANGE, R=RED, Y=YELLOW)  
(00') RECORDED AS FILE NAME: 08-190C4.DWGI hereby certify that this land surveying document was prepared  
and the related survey work was performed by me or under my  
direct personal supervision and that I am a duly licensed Land  
Surveyor under the laws of the State of Iowa.

Paul H. Helland 6/11/08

Paul H. Helland  
License Number 6505My license renewal date is December 31, 2009.  
All pages or sheets are covered by this seal except:

## LIST CORNERS TO BE INDEXED

CORNER	SECTION	TOWNSHIP	RANGE
NW CORNER	6	90N	14W

Rec