

Paul H. Helland, 1107 Technology Parkway, Cedar Falls, Iowa 50613-6951, (319)-266-0161

UNITED STATES PUBLIC LAND SURVEY CORNER CERTIFICATE  
OF

LAND SURVEY MONUMENTS SITUATED IN SECTION NO. 6, TOWNSHIP NO. 90 NORTH, RANGE NO. 14 WEST OF THE FIFTH PRINCIPAL MERIDIAN, BLACK HAWK COUNTY, IOWA.  
PREVIOUSLY RECORDED IN BREMER - DOC. #20032721 & BLACK HAWK - FEE BK #200330320

(SHOW REASON FOR PREPARING THIS CERTIFICATE, THE EVIDENCE AND DETAILED PROCEDURES USED IN ESTABLISHING THE CORNER POSITIONS AND MONUMENTATION FOUND OR PLACED.)

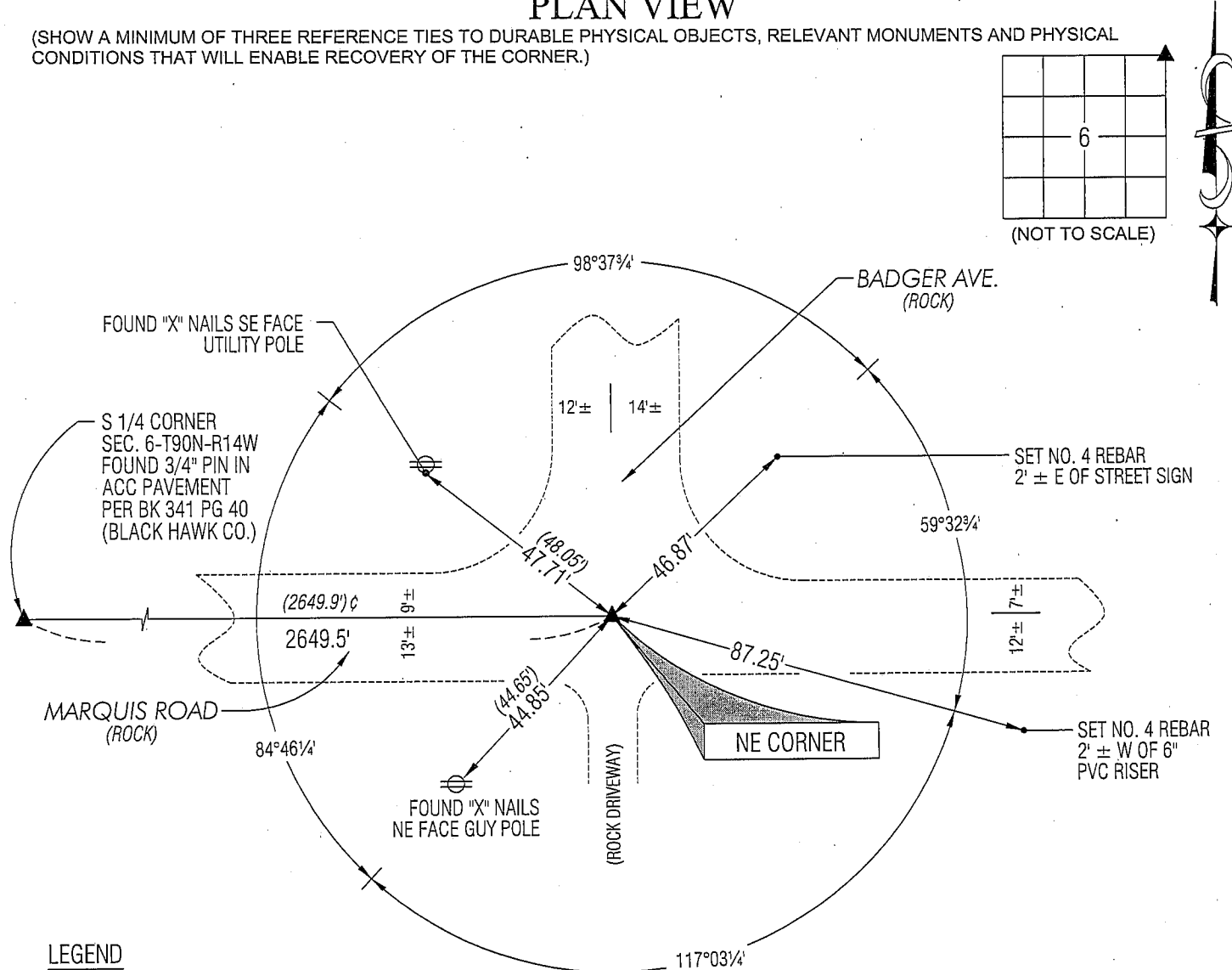
MONUMENT DESCRIPTION AND REMARKS:

USPLSCC DOC. NO. 20032721 (BREMER COUNTY) & FEE BK # 200330320 (BLACK HAWK) REFERENCE TIES HAVE CHANGED. SURVEY COMPLETED IN THE SW FRL 1/4 & SE 1/4 OF SEC. 31-T91N-R14W.

NE CORNER: USPLSCC DOC. NO. 20032721 DATED 4/10/2003 CALLS FOR [FOUND 5/8" REBAR ...]. AUDITOR'S FIELD NOTES PG 353 DATED 3/31/1938 CALL FOR [POST IN MOUND, PIT SOUTH]. FOUND NO. 5 REBAR 0.3' DEEP, LYING ON ITS SIDE. REMOVED AND FOUND NO. 5 REBAR 0.9' DEEP. THIS LOWER NO. 5 REBAR CORRESPONDS TO REMAINING TIES WITHIN REASON. UTILIZED 0.9' DEEP NO. 5 REBAR AS CORNER.

PLAN VIEW

(SHOW A MINIMUM OF THREE REFERENCE TIES TO DURABLE PHYSICAL OBJECTS, RELEVANT MONUMENTS AND PHYSICAL CONDITIONS THAT WILL ENABLE RECOVERY OF THE CORNER.)



LEGEND

(0.0')c PER AUDITOR'S FIELD NOTES PG 353 DATED 3/31/1938

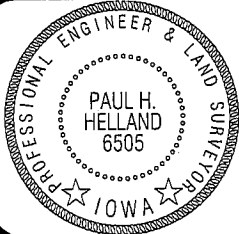


HELLAND ENGINEERING & SURVEYING, LTD.  
1107 Technology Parkway  
Cedar Falls, Iowa 50613-6951  
(319)-266-0161

SHINER = 8D NAIL & 1 5/16"Ø METAL SHINER  
BRASS TAG = 13/16"Ø BRASS TAG  
OPC = PLASTIC CAP (O=ORANGE, R=RED, Y=YELLOW)  
(00') RECORDED AS FILE NAME: 08-190C2.DWG

LIST CORNERS TO BE INDEXED

CORNER	SECTION	TOWNSHIP	RANGE
NE CORNER	6	90N	14W
NW CORNER	5	90N	14W



I hereby certify that this land surveying document was prepared and the related survey work was performed by me or under my direct personal supervision and that I am a duly licensed Land Surveyor under the laws of the State of Iowa.

*Paul H. Helland 6/11/08*  
Paul H. Helland  
License Number 6505

My license renewal date is December 31, 2009.  
All pages or sheets are covered by this seal except:

Rec.