

PREPARED BY: * BLACK HAWK COUNTY ENGINEERS OFFICE
316 E. FIFTH STREET, ROOM 211 WATERLOO, IOWA 50703

PH.# (319) 833-3008
FAX.# (319) 833-3139

SLSI 9-94
BHCO 03-09

UNITED STATES PUBLIC LAND SURVEY CORNER CERTIFICATE OF
Land Survey Monuments situated in Section 6, Township 90 N,
Range 14 W, of the Fifth Principal Meridian, BLACK HAWK County, Iowa.
Previously recorded in File 2009-000536 in County Recorder's Office.

(Show reason for preparing this certificate): The corner monument has been Replaced or Modified, per Ia. Code 355.11(1)(c)

(Evidence and detailed procedures used in establishing the corner position(s) and monumentation found or placed.)

Monument Description and Remarks: N. 1/4 CORNER:

CORNER ALSO PREV. RECORDED IN MISC. BK. 341 p.040 OF BHCO. RECORDER RECORDS.
CORNER RESET & TIES UPDATED PER H.M.A. RESURF. PROJECT LFM-503--7X-07. PRIOR TO
RESURF. PROJECT, FOUND 3/4" (#6) REBAR PER CURRENT RECORD AND TEMP. REF. CORNER
LOC. PER RTK GPS. AFTER 1.5' DEEP MILL & REFILL w/INTERMED. COURSE H.M.A., SOUNDING
REMAINED @ LOCATION AND EXCAVATED ±0.4' DEPTH & FOUND #6 REBAR INTACT AND
STABLE WITH NO FURTHER EXCAVATION @ LOCATION WITH REBAR REMAINING. AFTER
ADDITIONAL 1.5' H.M.A. SURFACE COURSE, RESET CORNER WITH 5/8" (#5) x ±6"L. REBAR
OVER EXIST. #6 REBAR PER RTK GPS REFERENCE. CORNER LOCATED @ (±) 0.83' NORTH
OF H.M.A. JOINT AND ALIGNED WITH H.M.A. JOINT TO SOUTH.

PLAN VIEW

"NOT TO SCALE"

BHco Hist. Ties: BK. #1003 p. 6 T90-R14

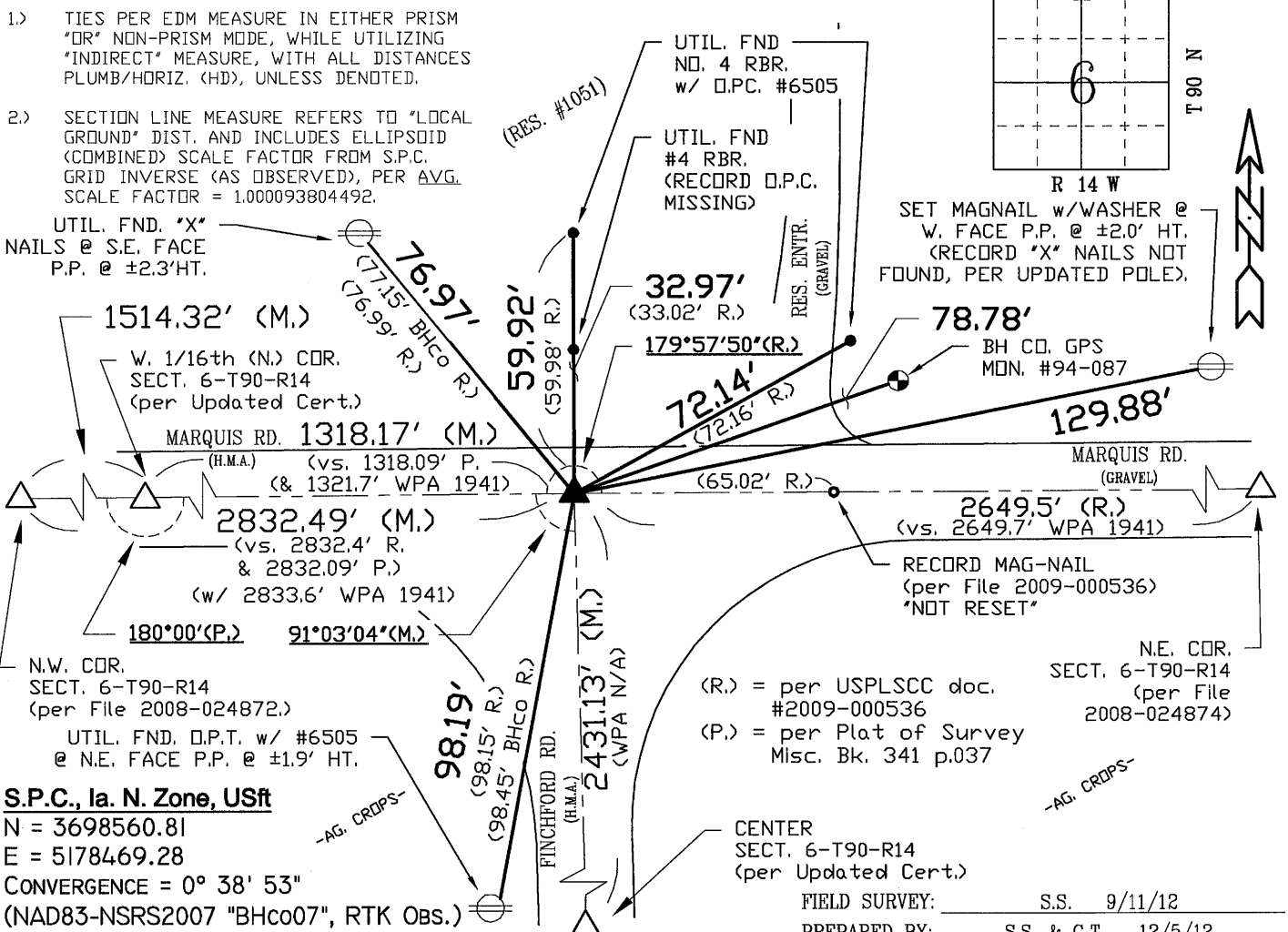
FIELD BOOK: Ties per Topcon 7003i #Z0115

(Show a minimum of three reference ties to durable physical objects, relevant monuments and physical conditions that will enable recovery of the corner.)

1.) TIES PER EDM MEASURE IN EITHER PRISM
"OR" NON-PRISM MODE, WHILE UTILIZING
"INDIRECT" MEASURE, WITH ALL DISTANCES
PLUMB/HORIZ. (HD), UNLESS DENOTED.

2.) SECTION LINE MEASURE REFERS TO "LOCAL
GROUND" DIST. AND INCLUDES ELLIPSOID
(COMBINED) SCALE FACTOR FROM S.P.C.
GRID INVERSE (AS OBSERVED), PER AVG.
SCALE FACTOR = 1.000093804492.

UTIL. FND. "X"
NAILS @ S.E. FACE
P.P. @ ±2.3' HT.



S.P.C., Ia. N. Zone, USft

N = 3698560.81

E = 5178469.28

CONVERGENCE = 0° 38' 53"

(NAD83-NSRS2007 "BHCO07", RTK OBS.)

(R.) = per USPLSCC doc.
#2009-000536

(P.) = per Plat of Survey
Misc. BK. 341 p.037

CENTER
SECT. 6-T90-R14
(per Updated Cert.)

FIELD SURVEY: S.S. 9/11/12

PREPARED BY: S.S. & G.T. 12/5/12

CERTIFICATION

I hereby certify that this land surveying document
was prepared and the related survey work was
performed by me or under my direct personal
supervision and that I am a duly licensed Land
Surveyor under the laws of the State of Iowa.

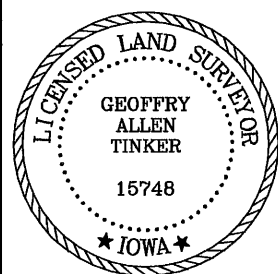
Geoffrey Allen Tinker 12/05/2012
Geoffrey Allen Tinker (date)

License Number 15748

My license renewal date is December 31, 2012

Pages or sheets covered by this seal:

This Land Corner Certificate Only.



LIST CORNERS TO BE INDEXED

Corner	Section	Township	Range
N. 1/4 Cor.	6	90 N	14 W

INDEX OF ABBREVIATIONS

(M) = "Measured" Dimension	"NP" = Reflectorless EDM Meas.
(P) = "Platted" Dimension	"MLM" = Indirect Measure
(R) = "Record" Dimension	"CM" = Concrete Monument
(C) = "Calculated" Dimension	"SM" = Survey Marker Spike/Tag
"IGS" = Iowa Geodetic Survey	"PK" = PK/MAG Nail Brand Style
"WPA" = Works Progress Admin. Survey	
"G" = per George Miller Survey (BHco Surveyor 1858-1860)	
"B" = per John Ball Survey (BHco Surveyor 1866-1891)	
"N" = per Nathan Barber Survey (BHco Surveyor 1908-1931)	