

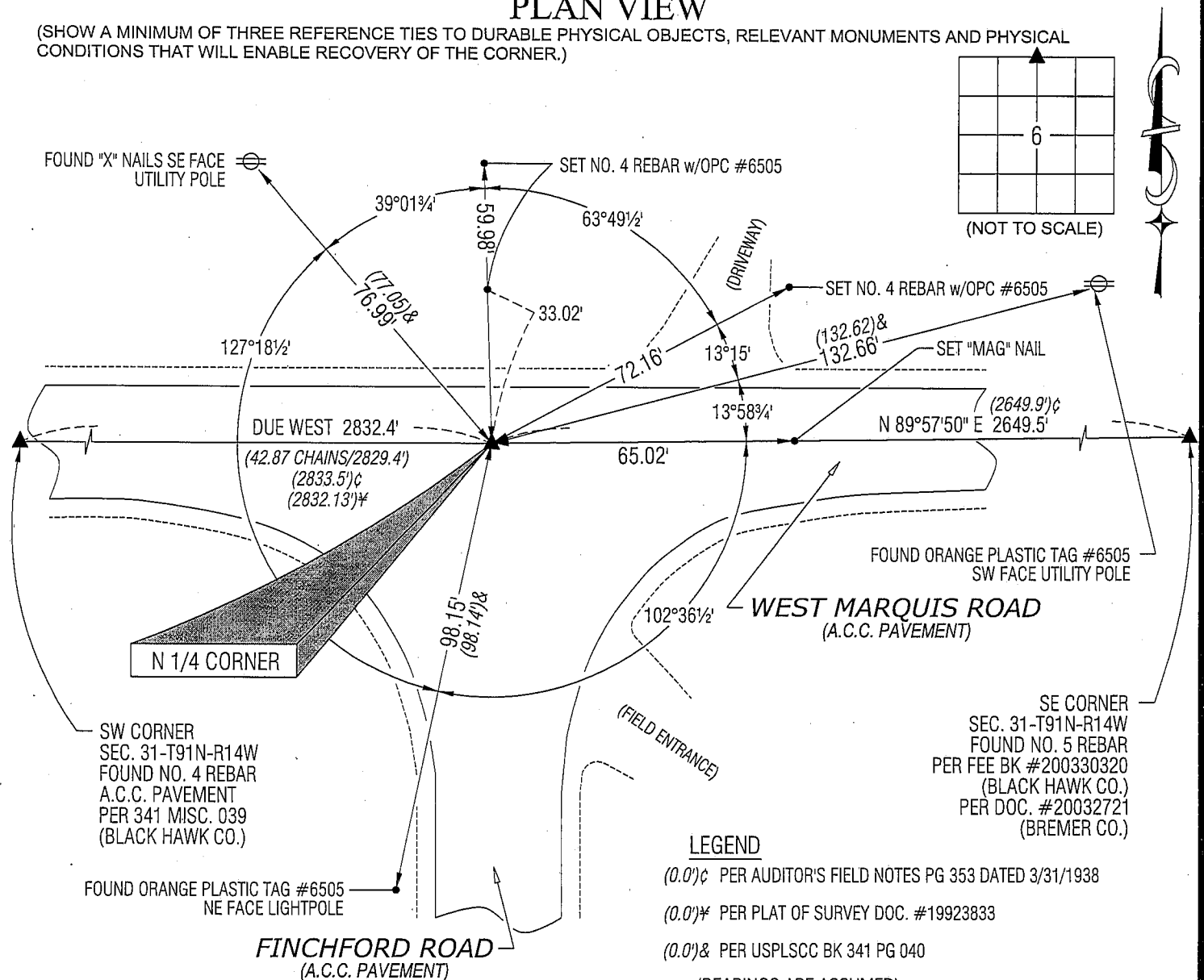
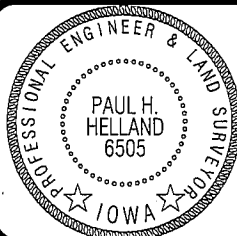
Paul H. Helland, 1107 Technology Parkway, Cedar Falls, Iowa 50613-6951, (319)-266-0161

UNITED STATES PUBLIC LAND SURVEY CORNER CERTIFICATE
OFLAND SURVEY MONUMENTS SITUATED IN SECTION NO. 6, TOWNSHIP NO. 90 NORTH, RANGE
NO. 14 WEST OF THE FIFTH PRINCIPAL MERIDIAN, BLACK HAWK COUNTY, IOWA.PREVIOUSLY RECORDED IN BK 341 PG 40(SHOW REASON FOR PREPARING THIS CERTIFICATE, THE EVIDENCE AND DETAILED PROCEDURES USED IN ESTABLISHING THE
CORNER POSITIONS AND MONUMENTATION FOUND OR PLACED.)

MONUMENT DESCRIPTION AND REMARKS:

USPLSCC BK 341 PG 40 REFERENCE TIES HAVE CHANGED. SURVEY COMPLETED IN PART OF SW FRL 1/4 & PART OF SE 1/4
OF SEC. 31-T91N-R14W.→ N 1/4 CORNER: AUDITOR'S FIELD NOTES PG 353 DATED 3/31/1938 CALLS FOR [POST IN MOUND, PIT SOUTH]. PLAT OF
SURVEY DOC. #19923833 (BREMER CO.) CALLS FOR [FOUND PIN]. USPLSCC BK 341 PG 40 DATED 11/8/2000 (BLACK
HAWK CO.) CALLS FOR [FOUND 3/4" DIAMETER IRON PIN]. FOUND 3/4"Ø IRON PIN IN A.C.C. CORRESPONDING WITHIN
REASON TO REMAINING TIES. SAID PIN IS @ CL OF BOTH ROADS. UTILIZED AS CORNER.

PLAN VIEW

(SHOW A MINIMUM OF THREE REFERENCE TIES TO DURABLE PHYSICAL OBJECTS, RELEVANT MONUMENTS AND PHYSICAL
CONDITIONS THAT WILL ENABLE RECOVERY OF THE CORNER.)HELLAND ENGINEERING & SURVEYING, LTD.
1107 Technology Parkway
Cedar Falls, Iowa 50613-6951
(319)-266-0161SHINER = 8D NAIL & 1 5/16"Ø METAL SHINER
BRASS TAG = 13/16"Ø BRASS TAG
OPC = PLASTIC CAP (O=ORANGE, R=RED, Y=YELLOW)
(00') RECORDED AS FILE NAME: 08-190C6.DWGI hereby certify that this land surveying document was prepared
and the related survey work was performed by me or under my
direct personal supervision and that I am a duly licensed Land
Surveyor under the laws of the State of Iowa.Paul H. Helland
License Number 6505
My license renewal date is December 31, 2009.
All pages or sheets are covered by this seal except:

LIST CORNERS TO BE INDEXED

CORNER	SECTION	TOWNSHIP	RANGE
N 1/4 CORNER	6	90N	14W