

TERRY VAN LANINGHAM 120 2ND ST SW WAVERLY IA 50677

PREPARED BY TERRY D. VAN LANINGHAM, PLS, INC. \* 120 2ND STREET, SW., WAVERLY, IOWA 50677 \* (319)352-0801

UNITED STATES PUBLIC LAND SURVEY CORNER CERTIFICATE

OF  
Land Survey Monuments situated in Section 06, Township 90 N, Range 14 W  
of the Fifth Principal Meridian, BLACK HAWK County, Iowa. Previously recorded  
in NONE in County Recorder's Office.

(book, page, document number, etc.)

(Show reason for preparing this certificate, the evidence and detailed procedures used in establishing the corner positions and monumentation found or placed.)

Monument Description and Remarks:

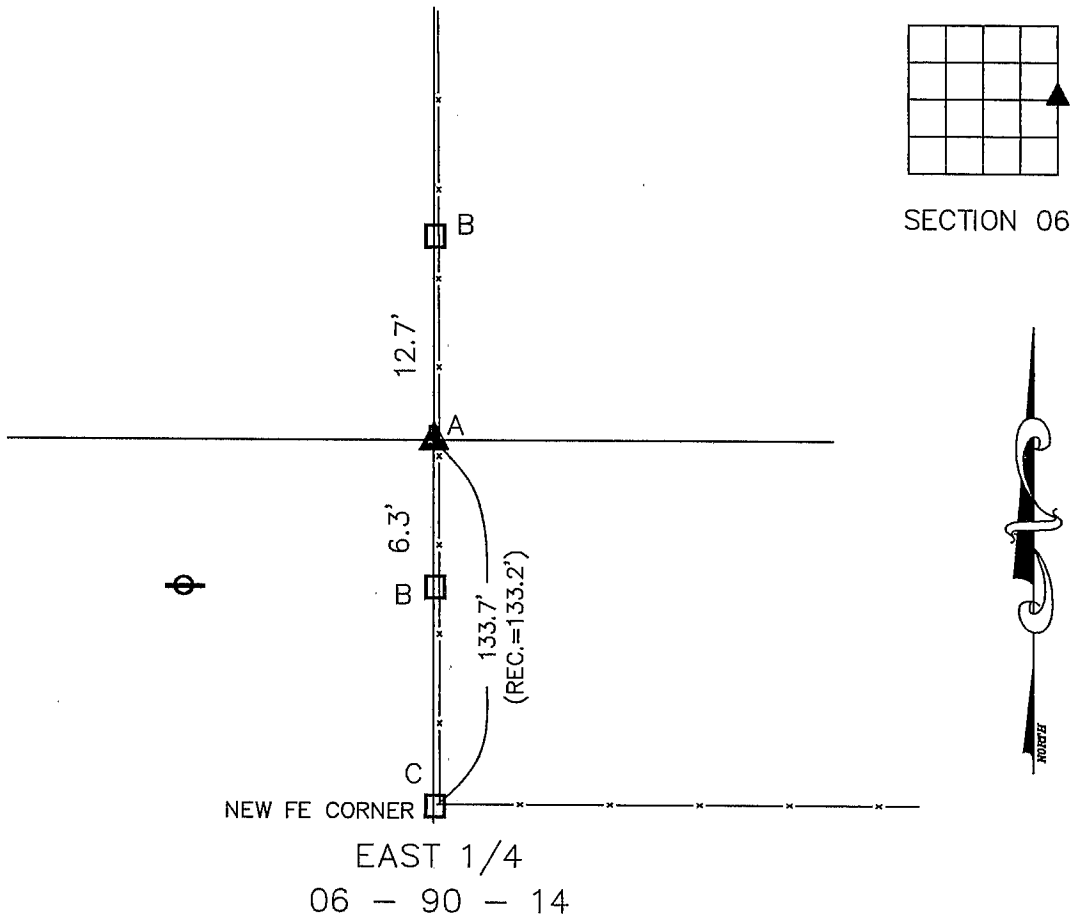
- A - FOUND CONC MONU w/ BRASS PLATE STAMPED " 6 + 5"  
B - FENCE POST  
C - FOUND NEW CORNER\* POST

RECOVERED FROM TIES FOUND IN THE COUNTY ENGINEER'S OFFICE DATED 4/7/41

NOTES REPORTED FINDING STONE AND HUB AND PLACING MONU. ON POINT FLUSH WITH GROUND

PLAN VIEW

(Show a minimum of three reference ties to durable physical objects, relevant monuments and physical conditions that will enable recovery of the corner.)



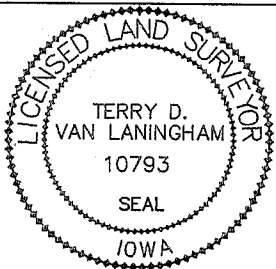
I hereby certify that this land surveying document was prepared and the related survey work was performed by me or under my direct personal supervision and that I am a duly licensed Land Surveyor under the laws of the State of Iowa.

*Terry D. Van Laningham* JAN. 14, 2003  
Terry D. Van Laningham, PLS Date:  
License number 10793

My registration renewal date is December 31, 2003.

Pages or sheets covered by this seal:

THIS SHEET ONLY



List Corners to be Indexed

Corners	Section	Township	Range
E 1/4	06	90 N	14 W

TERRY D. VAN LANINGHAM. PLS. INC.  
810 12TH AVE., NW WAVERLY, IOWA (319) 352 - 2132