



Doc ID: 007648480001 Type: GEN
Recorded: 06/08/2017 at 11:04:56 AM
Fee Amt: \$7.00 Page 1 of 1
Black Hawk County Iowa
SANDIE L. SMITH RECORDER
File **2017-00021621**

Prepared by & Return to: Herold - Reicks Surveying, 2206 East Bremer Avenue, Waverly, IA 50677, Ph. 319-483-5187

United States Public Land Survey Corner Certificate

Land Survey Monument situated in
Section **5**, Township **90** North, Range **14** West of the Fifth Principal Meridian, **Black Hawk** County, Iowa.
Not on file in the County Recorder's office.

This certificate is being prepared in compliance with Iowa Code Chapter 355.11 because:

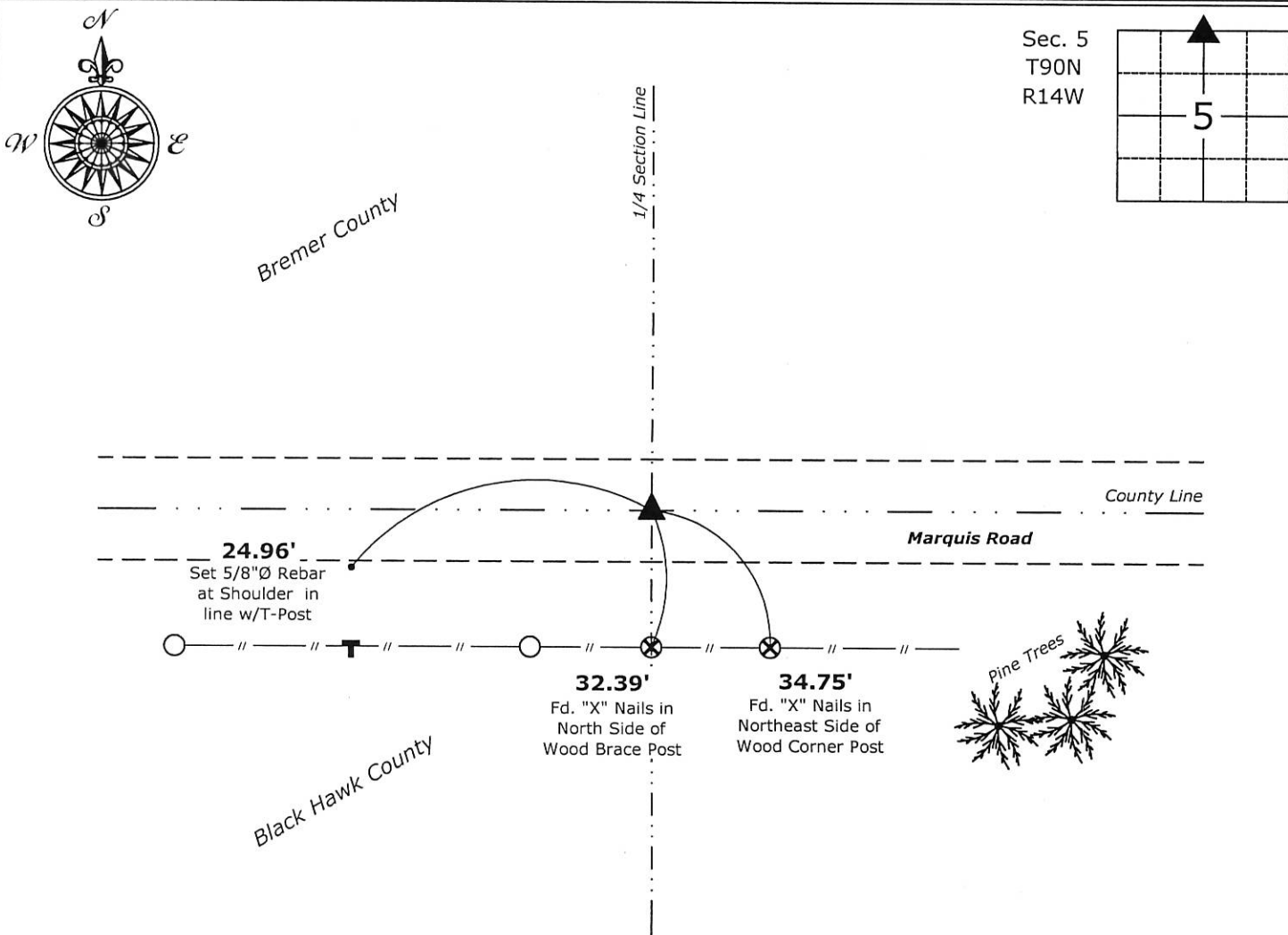
- ☒ There is no certificate on file for this corner.
☐ There are no longer three valid ties of record.
☐ There are changes to reference ties of record.
☐ There is change of monumentation of record.
☐ To clarify description of record monument (ties).

Monument Description and Remarks:

North 1/4 Corner: Found Standard Concrete Monument 12" deep w/information obtained from the previously recorded Section Corner Certificate, Document #2003-2721, on file in the Bremer County Recorder's office, Waverly, Iowa. Set 5/8"Ø Rebar along West Side of Monument as an Accessory to aid in the future recovery of Corner.

Plan View

(Show a minimum of three reference ties to durable physical objects, relevant monuments and physical conditions that will enable recovery of the corner.)



North 1/4 Corner of Section 5-90-14
Found Standard Concrete Monument



I hereby certify that this land surveying document was prepared and the related survey work was performed by me or under my direct personal supervision and that I am a duly licensed Land Surveyor under the laws of the State of Iowa.

Isaiah M. Reicks 6-4-17
Isaiah M. Reicks Date:
License number 22468
My license renewal date is December 31, 2017.
Sheets covered by this seal: Individual sheet only

List Corner to be Indexed			
Corner	Section	Twp.	Range
N 1/4	5	90	14
Project Number: 2017-512			
FB: Bremer-11, Pgs. 43-44			