

EARTH TECH 501 SYCAMORE ST WATERLOO IA 50703

Michael R. Fagle, L.S.

Earth Tech, 501 Sycamore St., Suite 222, Waterloo, Iowa 50703

I-319-232-6531

UNITED STATES PUBLIC LAND SURVEY CORNER CERTIFICATE OF

Land Survey Monuments situated in Section 4, Township 90 North,
Range 14 West, of the Fifth Principal Meridian, Black Hawk
County, Iowa. Previously recorded in Chaining Notes Field Books
In County Engineer's Office. (Book, Page, Document Number, etc.)

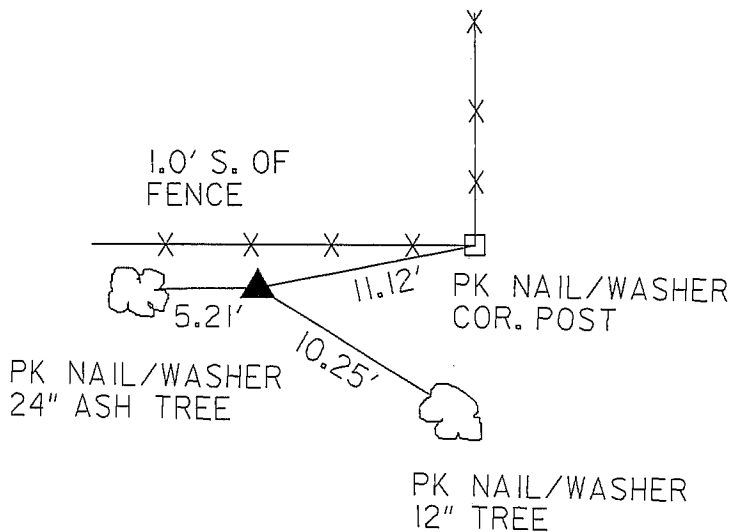
(Show reason for preparing this certificate, the evidence and detailed procedures used in establishing the corner positions and monumentation found or placed.)

Monument Description and Remarks: NW CORNER AND N 1/4 CORNER SECTION 4 FOUND
STANDARD CONCRETE MOUNUMENTS FROM CHAINING
NOTES.

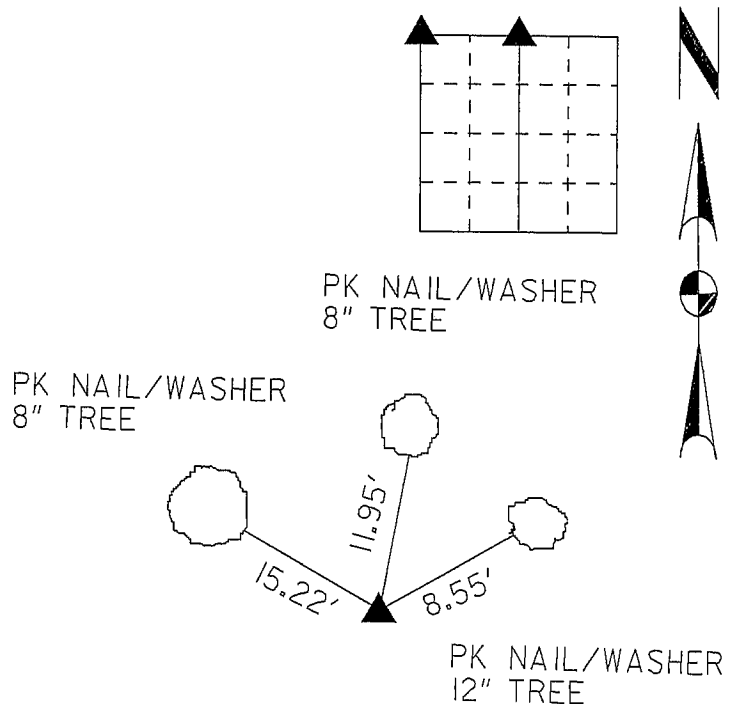
PLAN - VIEW

(Show a minimum of three reference ties to durable physical objects, relevant monuments and physical conditions that will enable recovery of the corner.)

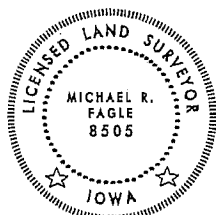
ALL MEASUREMENTS ARE PLUMBED



NW COR. FOUND STANDARD
CONCRETE MONUMENT WITH BRASS CAP



N 1/4 COR. FOUND STANDARD
CONCRETE MONUMENT WITH BRASS CAP



I hereby certify that this Land Surveying document was prepared by me or under my direct personal supervision and that I am a duly Licensed Land Surveyor under the laws of the State of Iowa.

Michael R. Fagle 6-21-05
MICHAEL R. FAGLE Date

License number 8505

My license renewal date is December 31, 2006

Pages or sheets covered by this seal:
THIS SHEET

List Corners to be Indexed

Corners	Section	Twp	Range
NORTHWEST CORNER	4	T 90 N	R 14 W
NORTH 1/4 CORNER	4	T 90 N	R 14 W