

SC

MISC

INDEX

MARGIN

PROOF

COMPARE

BLACK HAWK COUNTY IOWA:SS

Filed for record Nov 24, 1999 at

4:00 P.M. and recorded in Book 336

Page 496

Recorder

Fee 1-5.00/

PAUL HELLAND ENGINEERING

1107 TECHNOLOGY PARK

CEDAR FALLS IA 50613

Paul H. Helland, 1107 Technology Parkway, Cedar Falls, Iowa 50613-6951, (319)-266-0161

## UNITED STATES PUBLIC LAND SURVEY CORNER CERTIFICATE OF

LAND SURVEY MONUMENTS SITUATED IN SECTION NO. 3, TOWNSHIP NO. 90 NORTH, RANGE  
NO. 14 WEST OF THE FIFTH PRINCIPAL MERIDIAN, BLACK HAWK COUNTY, IOWA.

PREVIOUSLY RECORDED IN BOOK \_\_\_\_\_, PAGE \_\_\_\_\_.

(SHOW REASON FOR PREPARING THIS CERTIFICATE, THE EVIDENCE AND DETAILED PROCEDURES USED IN ESTABLISHING THE  
CORNER POSITIONS AND MONUMENTATION FOUND OR PLACED.)

### MONUMENT DESCRIPTION AND REMARKS:

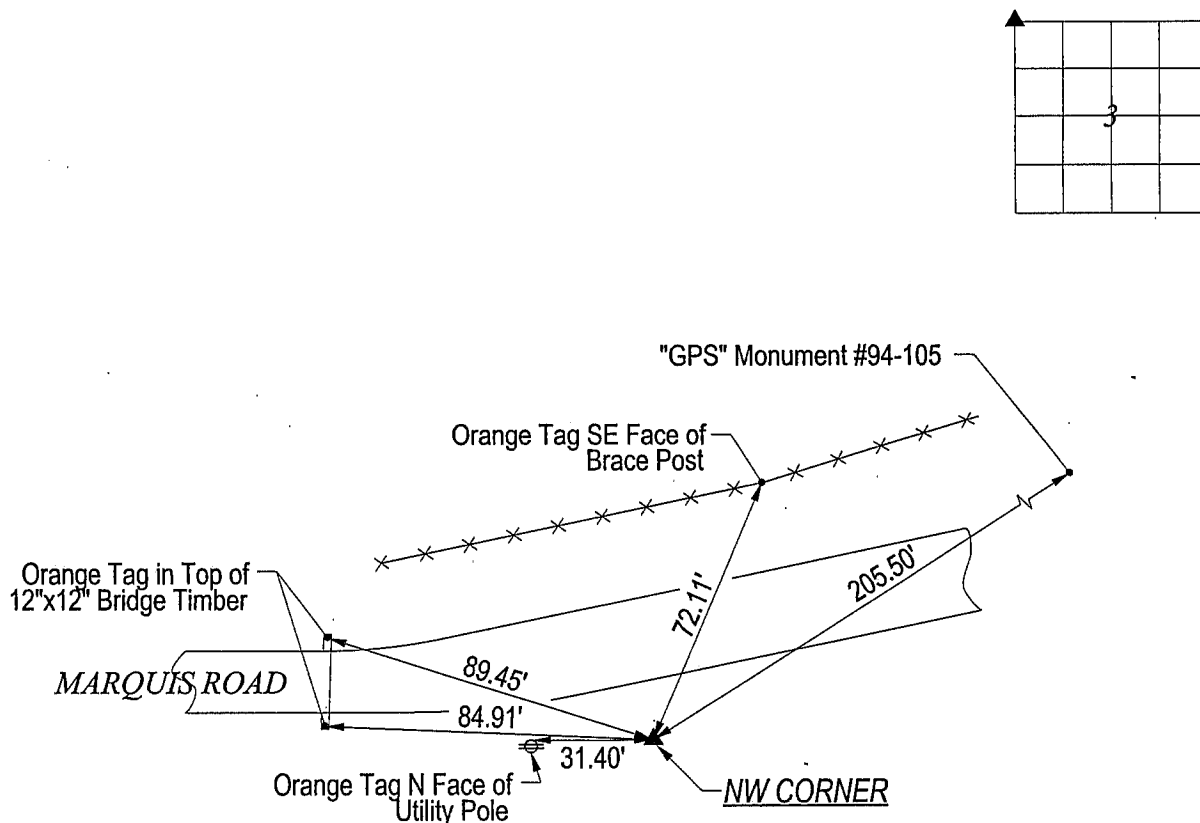
SURVEY DONE IN NW 1/4 SW 1/4 OF SEC. 34-T91N-R14W

NW CORNER: FOUND CONCRETE MONUMENT W/BRASS CAP 0.9' DEEP, SET NO. 4 REBAR ON NORTH SIDE FOR  
MAGNETIC DETECTION.

RECEIVED  
BLACK HAWK COUNTY  
ASSESSOR

### PLAN VIEW

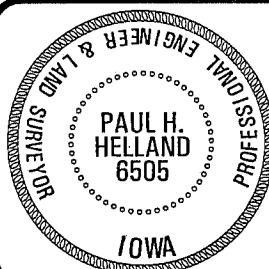
(SHOW A MINIMUM OF THREE REFERENCE TIES TO DURABLE PHYSICAL OBJECTS, RELEVANT MONUMENTS AND PHYSICAL  
CONDITIONS THAT WILL ENABLE RECOVERY OF THE CORNER.)



**HES**

HELLAND ENGINEERING & SURVEYING, LTD.  
1107 Technology Parkway  
Cedar Falls, Iowa 50613-6951  
(319)-266-0161

FILE NAME: 99-243CB.DRG



I hereby certify that this land surveying document was prepared  
and the related survey work was performed by me or under my  
direct personal supervision and that I am a duly licensed Land  
Surveyor under the laws of the State of Iowa.

*Paul H. Helland 9/13/99*  
Paul H. Helland  
License Number 6505

My license renewal date is December 31, 1999.  
All pages or sheets are covered by this seal except:

LIST CORNERS TO BE INDEXED  
CORNER SECTION TOWNSHIP RANGE

NW CORNER 3 90N 14W

336 PAGE 496