

*Patricia A. Suss*

HELLAND ENGINEERING &amp; SURVEYING LTD

Paul H. Helland, 1107 Technology Parkway, Cedar Falls, Iowa 50613-6951, (319)-266-0161

UNITED STATES PUBLIC LAND SURVEY CORNER CERTIFICATE  
OFLAND SURVEY MONUMENTS SITUATED IN SECTION NO. 3, TOWNSHIP NO. 90 NORTH, RANGE  
NO. 14 WEST OF THE FIFTH PRINCIPAL MERIDIAN, BLACK HAWK COUNTY, IOWA.

PREVIOUSLY RECORDED IN BOOK \_\_\_\_\_, PAGE \_\_\_\_\_.

(SHOW REASON FOR PREPARING THIS CERTIFICATE, THE EVIDENCE AND DETAILED PROCEDURES USED IN ESTABLISHING THE  
CORNER POSITIONS AND MONUMENTATION FOUND OR PLACED.)

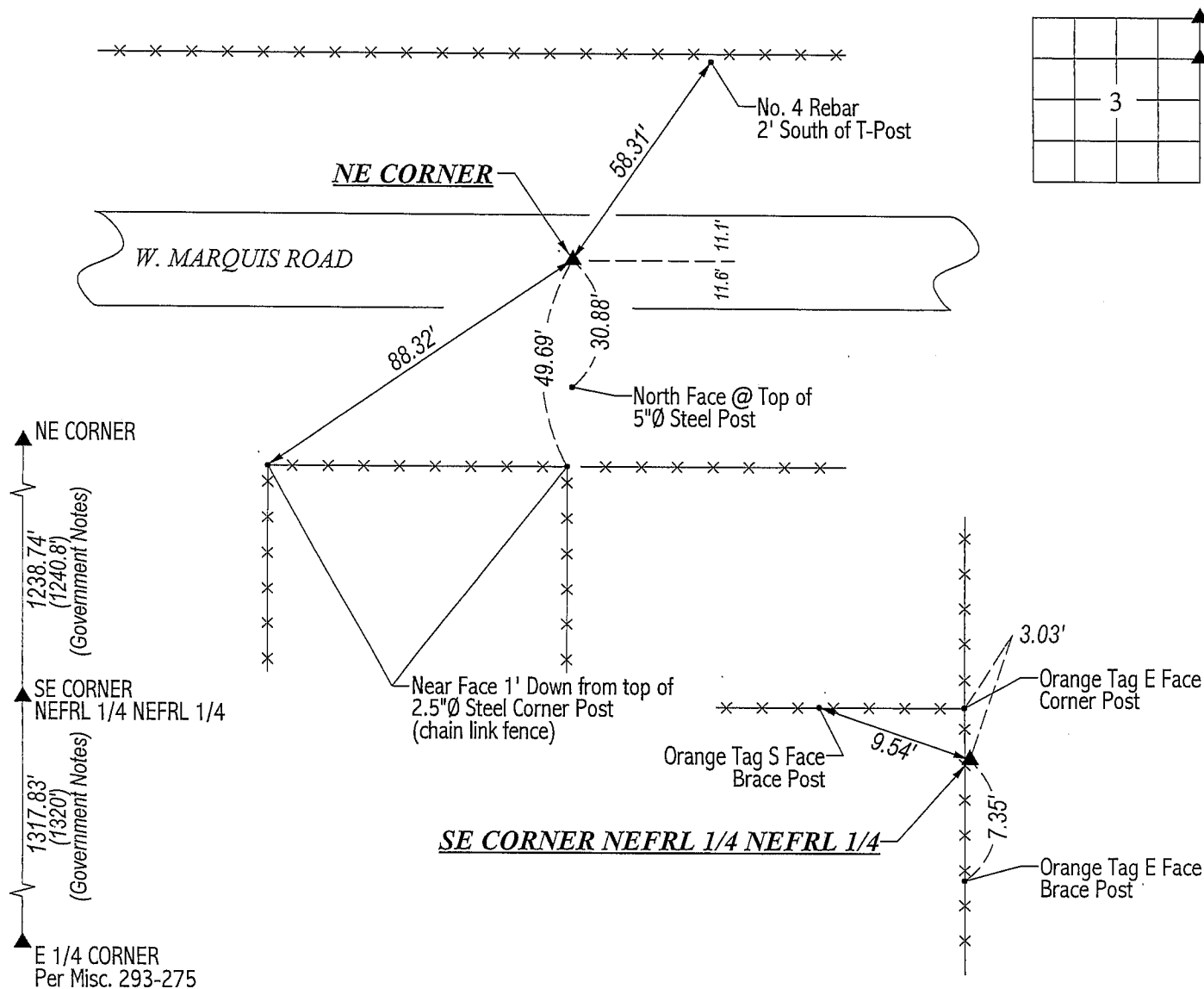
## MONUMENT DESCRIPTION AND REMARKS:

SURVEY DONE IN NEFRL 1/4 NEFRL 1/4 OF SEC. 3-T90N-R14W.

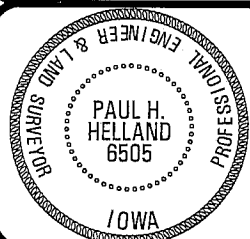
NE CORNER: Found No. 5 rebar in A.C.C. pavement. No county reference ties remain.

SE CORNER of NEFRL 1/4 NEFRL 1/4: No county reference ties or chaining notes. Excavated around corner post and 373.88 feet  
(recorded as 373.88) South of a found pinched pipe. No evidence found. Set No. 4 rebar w/orange cap #6505 on a straight line  
between the NE Corner & E 1/4 Corner and 373.88 feet South of said pinched pipe. Corner is 3.1' South & 0.3' East of corner post.

## PLAN VIEW

(SHOW A MINIMUM OF THREE REFERENCE TIES TO DURABLE PHYSICAL OBJECTS, RELEVANT MONUMENTS AND PHYSICAL  
CONDITIONS THAT WILL ENABLE RECOVERY OF THE CORNER.)HELLAND ENGINEERING & SURVEYING, LTD.  
1107 Technology Parkway  
Cedar Falls, Iowa 50613-6951  
(319)-266-0161

FILE NAME: 01-121CC.DRG

I hereby certify that this land surveying document was prepared  
and the related survey work was performed by me or under my  
direct personal supervision and that I am a duly licensed Land  
Surveyor under the laws of the State of Iowa.*Paul H. Helland 10/3/05*  
Paul H. Helland  
License Number 6505  
My license renewal date is December 31, 2005  
All pages or sheets are covered by this seal except:

## LIST CORNERS TO BE INDEXED

CORNER	SECTION	TOWNSHIP	RANGE
NE CORNER	3	90N	14W
SE CORNER NEFRL 1/4 NEFRL 1/4	3	90N	14W

*Rac*