



Doc ID: 004217520001 Type: GEN
Kind: CORNER
Recorded: 08/04/2010 at 10:13:00 AM
Fee Amt: \$0.00 Page 1 of 1
Black Hawk County Iowa
JUDITH A MCCARTHY RECORDER

File 2011-00002257

PREPARED BY: BLACK HAWK COUNTY ENGINEERS OFFICE
316 E. FIFTH STREET, ROOM 211 WATERLOO, IOWA 50703

PH.# (319) 833-3008
FAX# (319) 833-3139
SLSI 9-94
BHCO 03-09

UNITED STATES PUBLIC LAND SURVEY CORNER CERTIFICATE OF
Land Survey Monuments situated in Section 3, Township 90 N,
Range 14 W, of the Fifth Principal Meridian, BLACK HAWK County, Iowa.
Previously recorded in Misc. Book N/A, Page N/A, in County Recorder's Office.
(Show reason for preparing this certificate): There is No Certificate for the corner on file with County Recorder, per
Ia. Code 355.11(1)(a).

(Evidence and detailed procedures used in establishing the corner position(s) and monumentation found or placed.)
Monument Description and Remarks: E. 1/16th COR., NORTH:
FOUND #4 (1/2") REBAR w/YELLOW PLASTIC CAP (#9018) IN SEALCOAT, LOCATED WEST OF
P.I. REFERENCE FOR WINSLOW RD. TO SOUTH, BEING FOUND #4 REBAR PRIOR TO RESURF.
PROJECT. LAND CORNER NOT CURRENT FILE w/B.H. Co. RECORDER (BREMER COUNTY
RECORDS NOT RESEARCHED), AND LAND CORNER NOT DISTURBED AS PART OF PROJECT.
BOTH CORNER AND P.I. TEMP. REF. w/RTK GPS PRIOR TO HMA RESURF. PROJECT.
P.I. RESET WITH 6"L. x #5 REBAR, AND LOCATED 1' N. OF E.-W. C.L. HMA PAVEMENT
JOINT & ALIGNED w/C.L. HMA TO SOUTH.

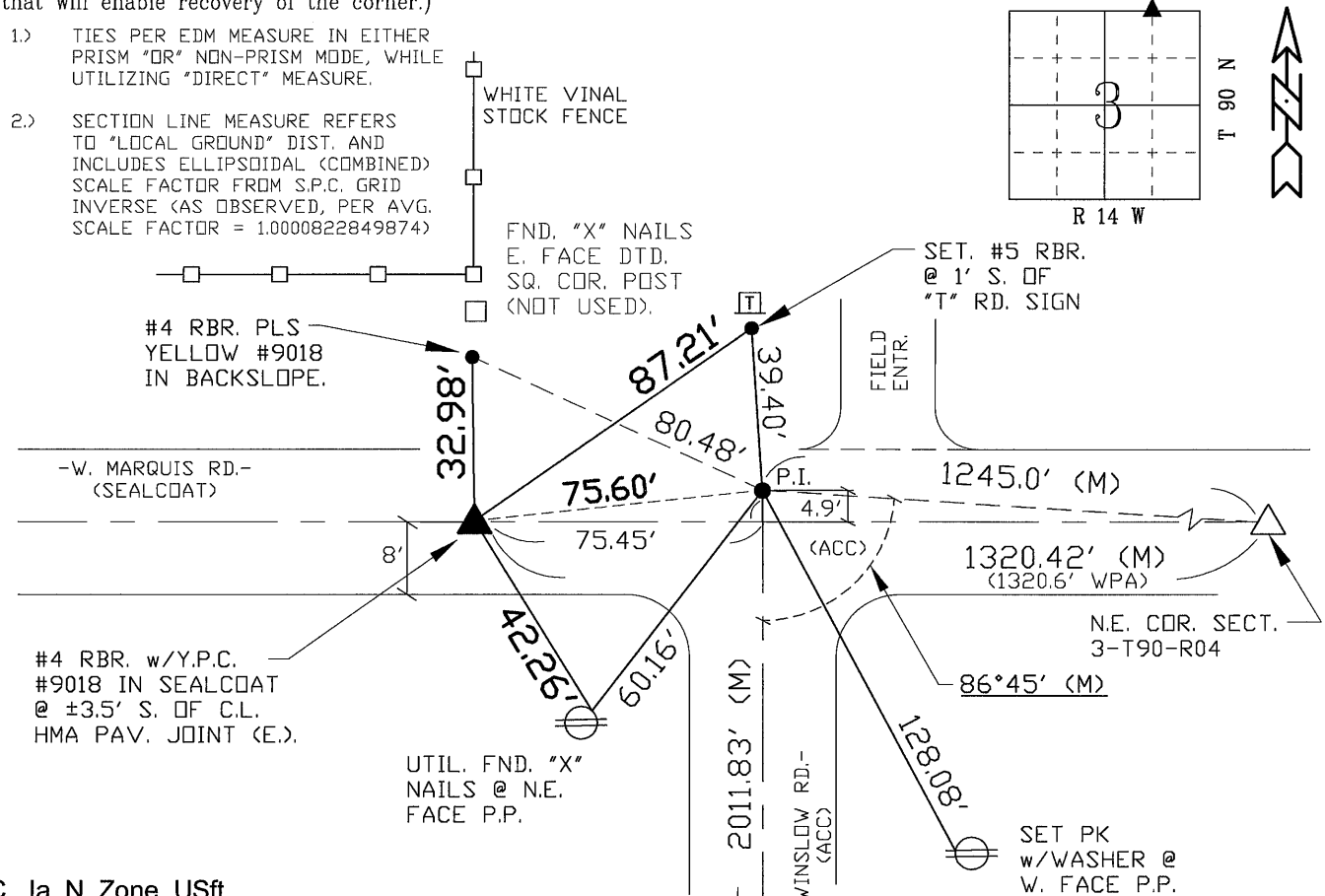
NOTE: ALL DISTANCES PLUMB/HORIZ.
(H.D.), "UNLESS DENOTED".

PLAN VIEW
"NOT TO SCALE"

BHco Hist. Ties: -N/A-
FIELD BOOK: TopSurv7-WinslowHMA

(Show a minimum of three reference ties to durable physical objects, relevant monuments and physical conditions
that will enable recovery of the corner.)

- 1.) TIES PER EDM MEASURE IN EITHER
PRISM "OR" NON-PRISM MODE, WHILE
UTILIZING "DIRECT" MEASURE.
- 2.) SECTION LINE MEASURE REFERS
TO "LOCAL GROUND" DIST. AND
INCLUDES ELLIPSOIDAL (COMBINED)
SCALE FACTOR FROM S.P.C. GRID
INVERSE (AS OBSERVED, PER AVG.
SCALE FACTOR = 1.0000822849874)



S.P.C., Ia. N. Zone, USft
LAND CORNER: P.I.:
N=3698753.15' N=3698759.23'
E=5195600.18' E=5195675.54'
(NAD83-2007 "BHco07", RTK Obs.)

FND. 60d SPK. IN E. SHLDR./E. EDGE PVM'T.
FIELD SURVEY: G.T. & J.D. & M.C. 06/04/10
PREPARED BY: J.D. & G.T. 8/3/10

CERTIFICATION



I hereby certify that this land surveying document
was prepared and the related survey work was
performed by me or under my direct personal
supervision and that I am a duly licensed Land
Surveyor under the laws of the State of Iowa.
Geoffrey Allen Tinker 08/03/2010 (date)
License Number 15748
My license renewal date is December 31, 2010
Pages or sheets covered by this seal:
This Land Corner Certificate Only.

LIST CORNERS TO BE INDEXED

Corner	Section -	Township -	Range
N.E. Cor.	3	90 N	14 W
NW1/4-NE1/4			

INDEX OF ABBREVIATIONS

(M) = "Measured" Dimension
(P) = "Platted" Dimension
(R) = "Record" Dimension
(C) = "Calculated" Dimension
"IGS" = Iowa Geodetic Survey
"WPA" = Works Progress Admin. Survey
"q" = per George Miller Survey (BHco Surveyor 1858-1860)
"b" = per John Ball Survey (BHco Surveyor 1866-1891)
"N" = per Nathan Barber Survey (BHco Surveyor 1908-1931)
"NP" = Reflectorless EDM Meas.
"MLM" = Indirect Measure
"CM" = Concrete Monument
"SM" = Survey Marker Spike/Tag
"PK" = PK/MAG Nail Brand Style