

INDEX VS BLACK HAWK COUNTY, IOWA:ss

FEE BOOK # 2006 9271

PROOF FILED FOR RECORD OCT 7, 2005, AT 10:00 A.M. FEE 1-5.00-1.00X

COMPARED

*Jeffrey P. Helland*

BLACK HAWK COUNTY RECORDER

HELLAND ENGINEERING &amp; SURVEYING LTD

Jeffrey P. Helland, 1107 Technology Parkway, Cedar Falls, Iowa 50613-6951, (319)-266-0161

UNITED STATES PUBLIC LAND SURVEY CORNER CERTIFICATE  
OFLAND SURVEY MONUMENTS SITUATED IN SECTION NO. 3, TOWNSHIP NO. 90 NORTH, RANGE  
NO. 14 WEST OF THE FIFTH PRINCIPAL MERIDIAN, BLACK HAWK COUNTY, IOWA.

PREVIOUSLY RECORDED IN \_\_\_\_\_

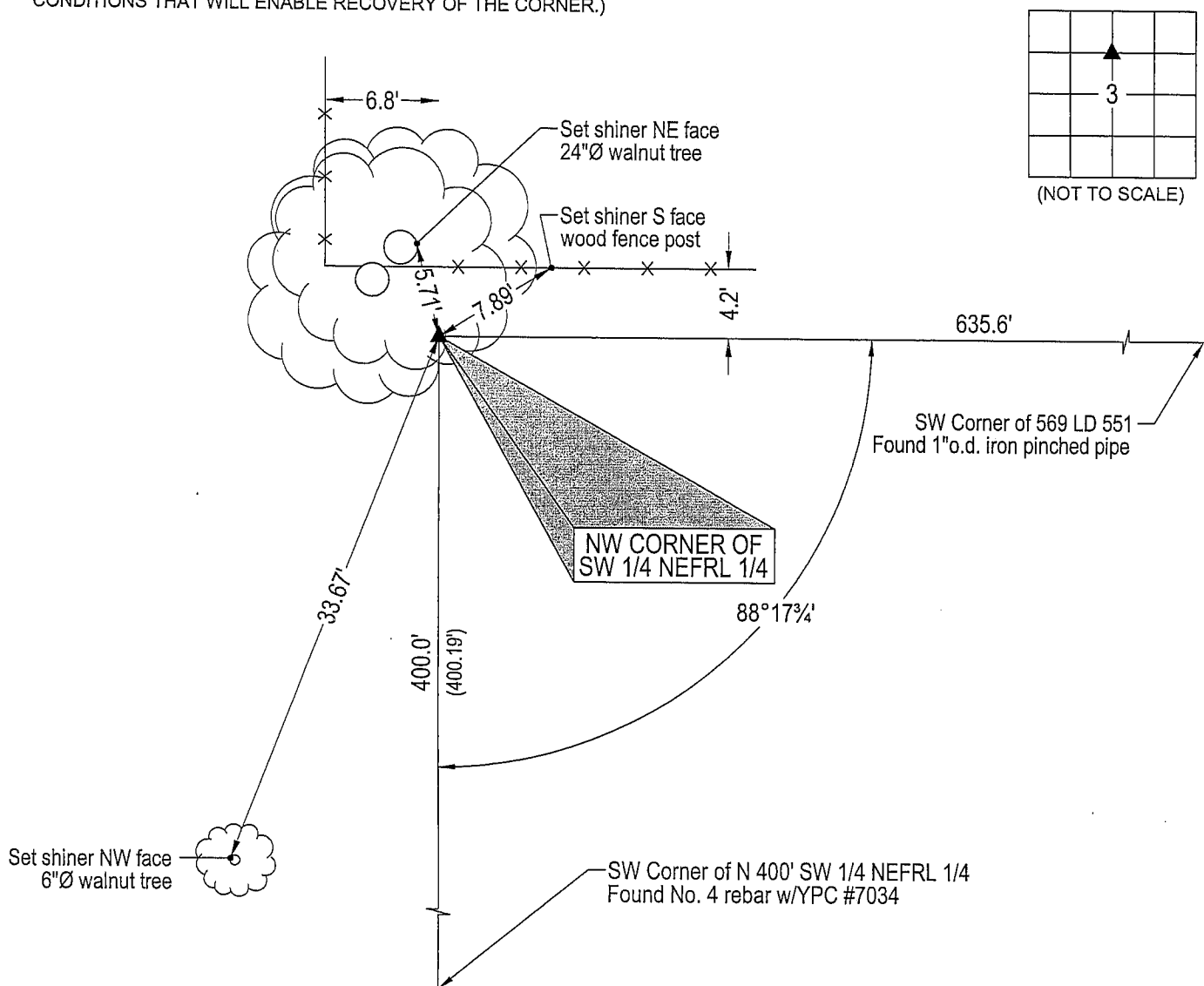
(SHOW REASON FOR PREPARING THIS CERTIFICATE, THE EVIDENCE AND DETAILED PROCEDURES USED IN ESTABLISHING THE  
CORNER POSITIONS AND MONUMENTATION FOUND OR PLACED.)

## MONUMENT DESCRIPTION AND REMARKS:

No USPLSCC on file. Survey completed in the S 1/2 NEFRL 1/4 of Sec. 3-T90N-T14W.

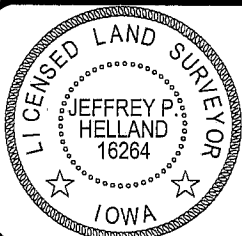
→ NW CORNER OF SW 1/4 NEFRL 1/4: No Black Hawk County Engineer reference ties available. Plat of Survey by Gary  
Brown #7034 dated 11/30/1982 recorded in 249 Misc. 604 calls for [IRON PIN FOUND] at corner. Found 1"o.d. iron  
pinched pipe 0.3' deep corresponding to said Plat of Survey.

## PLAN VIEW

(SHOW A MINIMUM OF THREE REFERENCE TIES TO DURABLE PHYSICAL OBJECTS, RELEVANT MONUMENTS AND PHYSICAL  
CONDITIONS THAT WILL ENABLE RECOVERY OF THE CORNER.)HELLAND ENGINEERING & SURVEYING, LTD.  
1107 Technology Parkway  
Cedar Falls, Iowa 50613-6951  
(319)-266-0161shiner = 8d nail & 1 15/16"Ø metal shiner  
OPC = Plastic cap (O=orange, R=red, Y=yellow)

(00') Recorded As

File Name: 05-169c1.dwg

I hereby certify that this land surveying document was prepared  
and the related survey work was performed by me or under my  
direct personal supervision and that I am a duly licensed Land  
Surveyor under the laws of the State of Iowa.*Jeffrey P. Helland* 10/4/05  
Jeffrey P. Helland  
License Number 16264  
My license renewal date is December 31, 2005.  
All pages or sheets are covered by this seal except:

CORNER	SECTION	TOWNSHIP	RANGE
NW CORNER	3	90N	14W
SW 1/4 NEFRL 1/4			