

Prepared by & Return to: Herold - Reicks Surveying, 2206 East Bremer Avenue, Waverly, IA 50677, Ph. 319-483-5187

United States Public Land Survey Corner Certificate

Land Survey Monument situated in
Section **3**, Township **90** North, Range **14** West of the Fifth Principal Meridian, **Black Hawk** County, Iowa.
On file in **Document #2004-00013165** in the County Recorder's office.

This certificate is being prepared in compliance with Iowa Code Chapter 355.11 because:

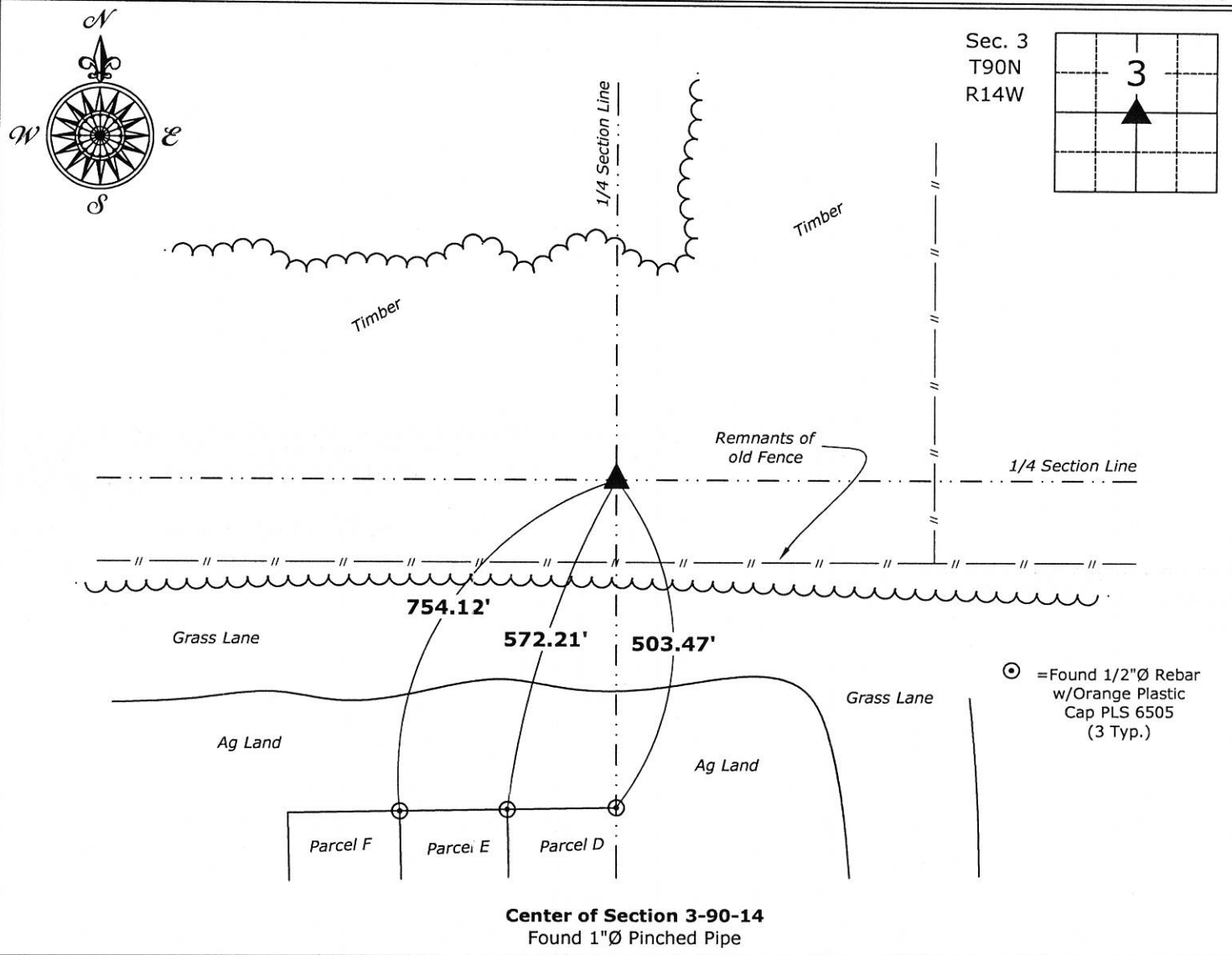
-
- ☐ There is no certificate on file for this corner.
 - ☒ There are no longer three valid ties of record.
 - ☐ There are changes to reference ties of record.
 - ☐ There is change of monumentation of record.
 - ☐ To clarify description of record monument (ties).

Monument Description and Remarks:

Center of Section: Found 1"Ø Pinched Pipe with information obtained from the previously recorded Section Corner Certificate.

Plan View

(Show a minimum of three reference ties to durable physical objects, relevant monuments and physical conditions that will enable recovery of the corner.)



I hereby certify that this land surveying document was prepared and the related survey work was performed by me or under my direct personal supervision and that I am a duly licensed Land Surveyor under the laws of the State of Iowa.

Isaiah M. Reicks 4-30-18
Isaiah M. Reicks Date:
License number 22468
My license renewal date is December 31, 2019.
Sheets covered by this seal: Individual sheet only

List Corner to be Indexed			
Corner	Section	Twp.	Range
CTR	3	90	14
Project Number: 2018-520			
FB: Black Hawk 10, Pgs. 31-32			