

File 2018-00006871

United States Public Land Survey Corner Certificate

Land Survey Monument situated in
Section **2**, Township **90** North, Range **14** West of the Fifth Principal Meridian, **Black Hawk** County, Iowa.
On file in **Book 293, Page 276** in the County Recorder's office.

This certificate is being prepared in compliance with Iowa Code Chapter 355.11 because:

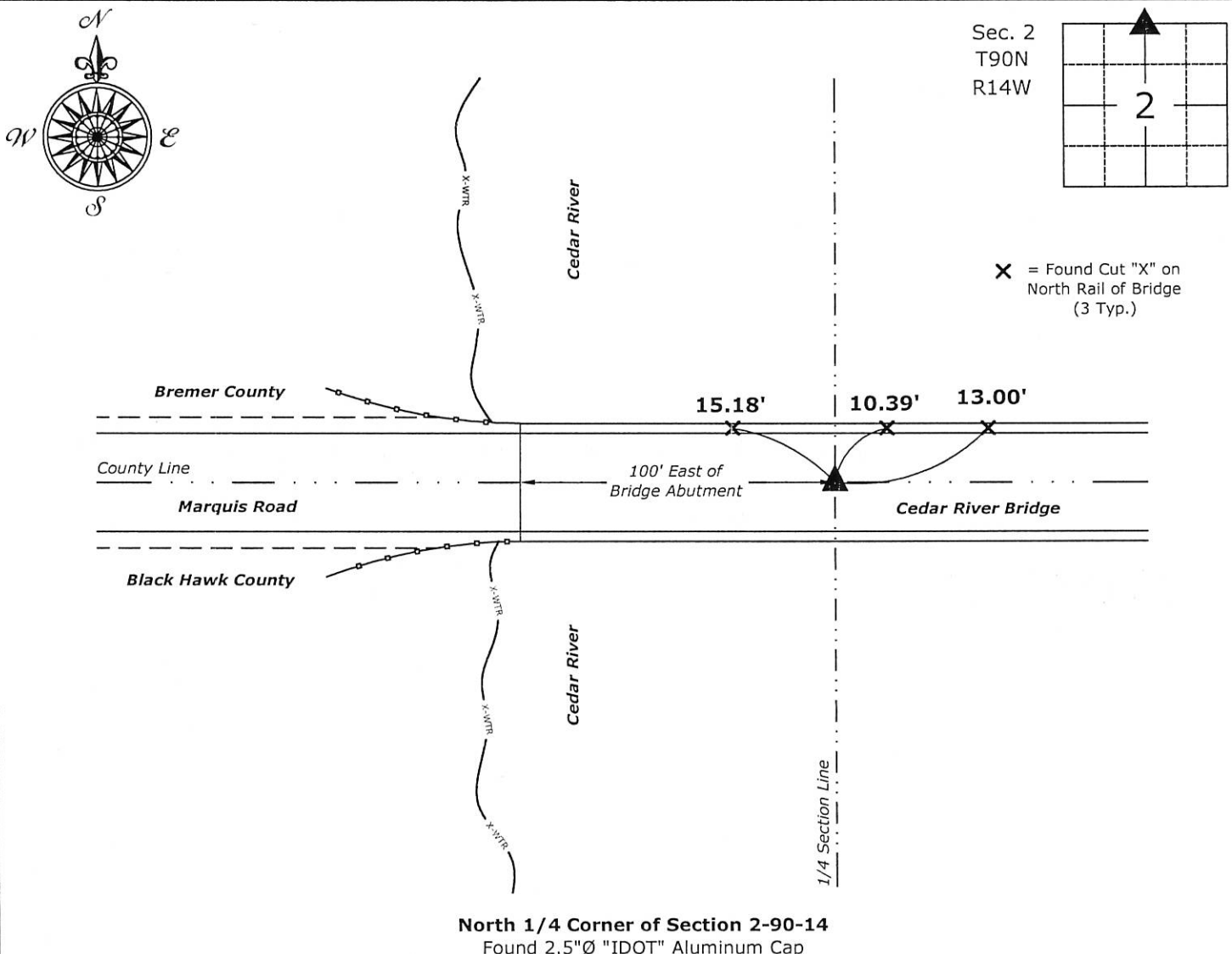
- ☐ There is no certificate on file for this corner.
☐ There are no longer three valid ties of record.
☐ There are changes to reference ties of record.
☐ There is change of monumentation of record.
☒ To clarify description of record monument (ties).

Monument Description and Remarks:

North 1/4 Corner: Found 2.5"Ø "IDOT" Aluminum Cap, set in concrete deck of bridge, with information obtained from the previously recorded Section Corner Certificate.

Plan View

(Show a minimum of three reference ties to durable physical objects, relevant monuments and physical conditions that will enable recovery of the corner.)



I hereby certify that this land surveying document was prepared and the related survey work was performed by me or under my direct personal supervision and that I am a duly licensed Land Surveyor under the laws of the State of Iowa.

Isaiah M. Reicks 10-13-17

License number 22468
My license renewal date is December 31, 2017.
Sheets covered by this seal: Individual sheet only

List Corner to be Indexed

Corner	Section	Twp.	Range
N 1/4	2	90	14

Project Number: 2017-542

FB: Black Hawk 10, Pg. 27