

PAUL HELLAND

I  
P  
Z

Document Number: 2007021950  
Date: Apr 18, 2007 4:30:00 pm  
Aud Fee: 0.00 Rec Fee: 5.00  
Trans Tax: 0.00 Rec Management Fee: 1.00  
E-Com Fee: 1.00 Non-Standard Page Fee: 0.00  
Filed for record in Black Hawk County, Iowa  
Judith A. McCarthy, County Recorder

Jeffrey P. Helland, 1107 Technology Parkway, Cedar Falls, Iowa 50613-6951, (319)-266-0161

# UNITED STATES PUBLIC LAND SURVEY CORNER CERTIFICATE OF

LAND SURVEY MONUMENTS SITUATED IN SECTION NO. 2, TOWNSHIP NO. 90 NORTH, RANGE NO. 14 WEST OF THE FIFTH PRINCIPAL MERIDIAN, BLACK HAWK COUNTY, IOWA.  
PREVIOUSLY RECORDED IN 293 MISC. 277

(SHOW REASON FOR PREPARING THIS CERTIFICATE, THE EVIDENCE AND DETAILED PROCEDURES USED IN ESTABLISHING THE CORNER POSITIONS AND MONUMENTATION FOUND OR PLACED.)

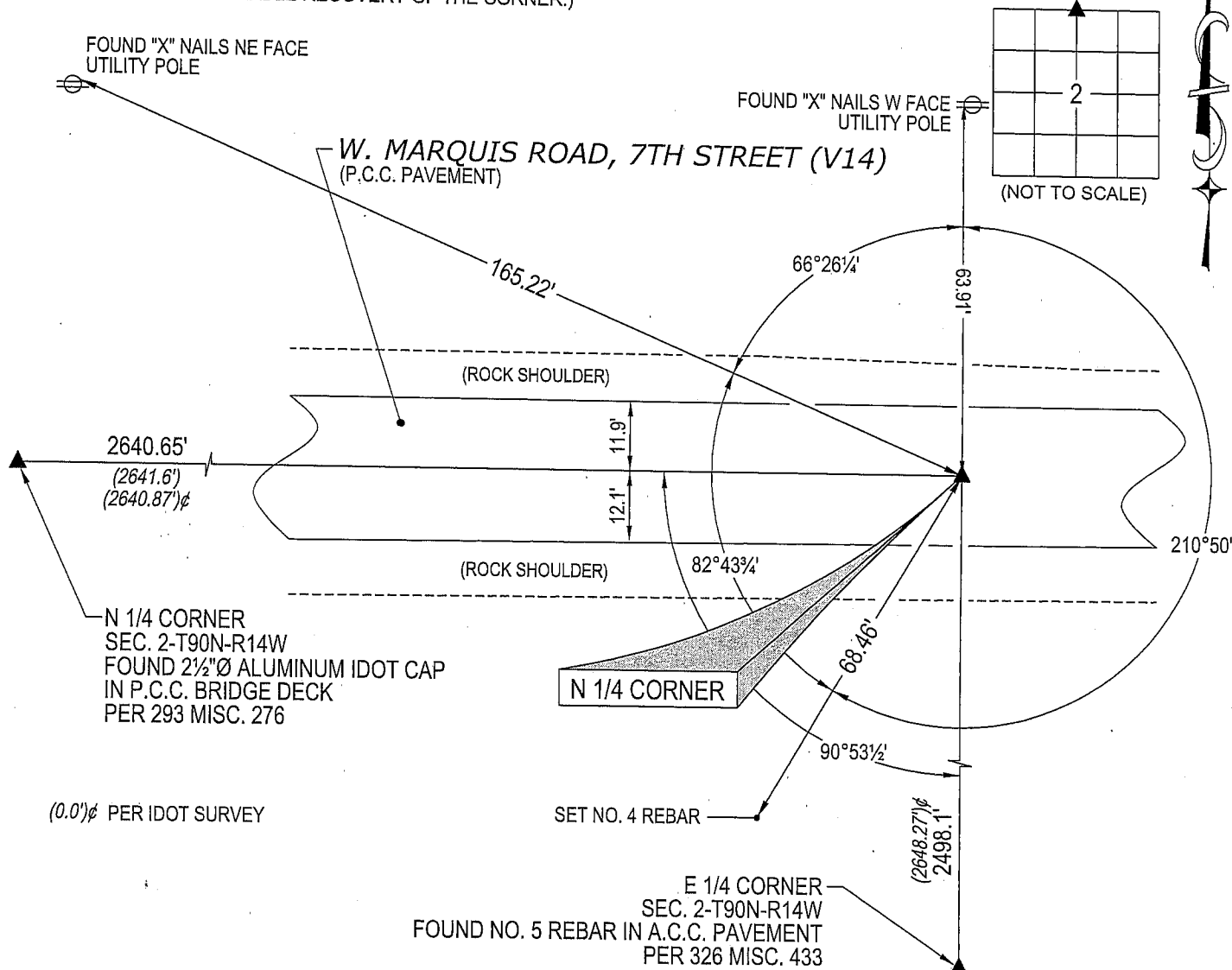
## MONUMENT DESCRIPTION AND REMARKS:

USPLSCC 293 MISC. 277 MONUMENTATION HAS CHANGED. SURVEY COMPLETED IN THE NE FRL 1/4 OF SEC. 2-T90N-R14W.

N 1/4 CORNER: USPLSCC 293 MISC. 277 CALLS FOR [REBAR-FOUND-4" DEEP]. ALL REFERENCE TIES PER USPLSCC 293 MISC. 277 HAVE BEEN OBLITERATED. FOUND "X" CUT IN P.C.C. PAVEMENT CORRESPONDING TO IDOT LAND CORNER SURVEY. "X" IS 0.1' NORTH OF CENTERLINE JOINT.

## PLAN VIEW

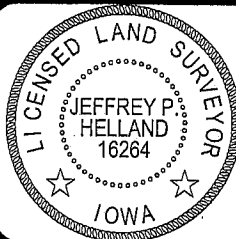
(SHOW A MINIMUM OF THREE REFERENCE TIES TO DURABLE PHYSICAL OBJECTS, RELEVANT MONUMENTS AND PHYSICAL CONDITIONS THAT WILL ENABLE RECOVERY OF THE CORNER.)



HELLAND ENGINEERING & SURVEYING, LTD.  
1107 Technology Parkway  
Cedar Falls, Iowa 50613-6951  
(319)-266-0161

SHINER = 8D NAIL & 1 5/16"Ø METAL SHINER  
OPC = PLASTIC CAP (O=ORANGE, R=RED, Y=YELLOW)

(00') RECORDED AS FILE NAME: 07-133C1.DWG



I hereby certify that this land surveying document was prepared and the related survey work was performed by me or under my direct personal supervision and that I am a duly licensed Land Surveyor under the laws of the State of Iowa.

Jeffrey P. Helland 4/3/07

Jeffrey P. Helland  
License Number 16264  
My license renewal date is December 31, 2007.  
All pages or sheets are covered by this seal except:

## LIST CORNERS TO BE INDEXED

CORNER	SECTION	TOWNSHIP	RANGE
N 1/4 CORNER	2	90N	14W