

PROOF FILED FOR RECORD APR 21 2003 AT 4:00P. M. FEE 1-5.00/

COMPARED

Patricia L. Suss

BLACK HAWK COUNTY RECORDER

HELLAND ENGINEERING & SURVEYING LTD

Paul H. Helland, 1107 Technology Parkway, Cedar Falls, Iowa 50613-6951, (319)-266-0161

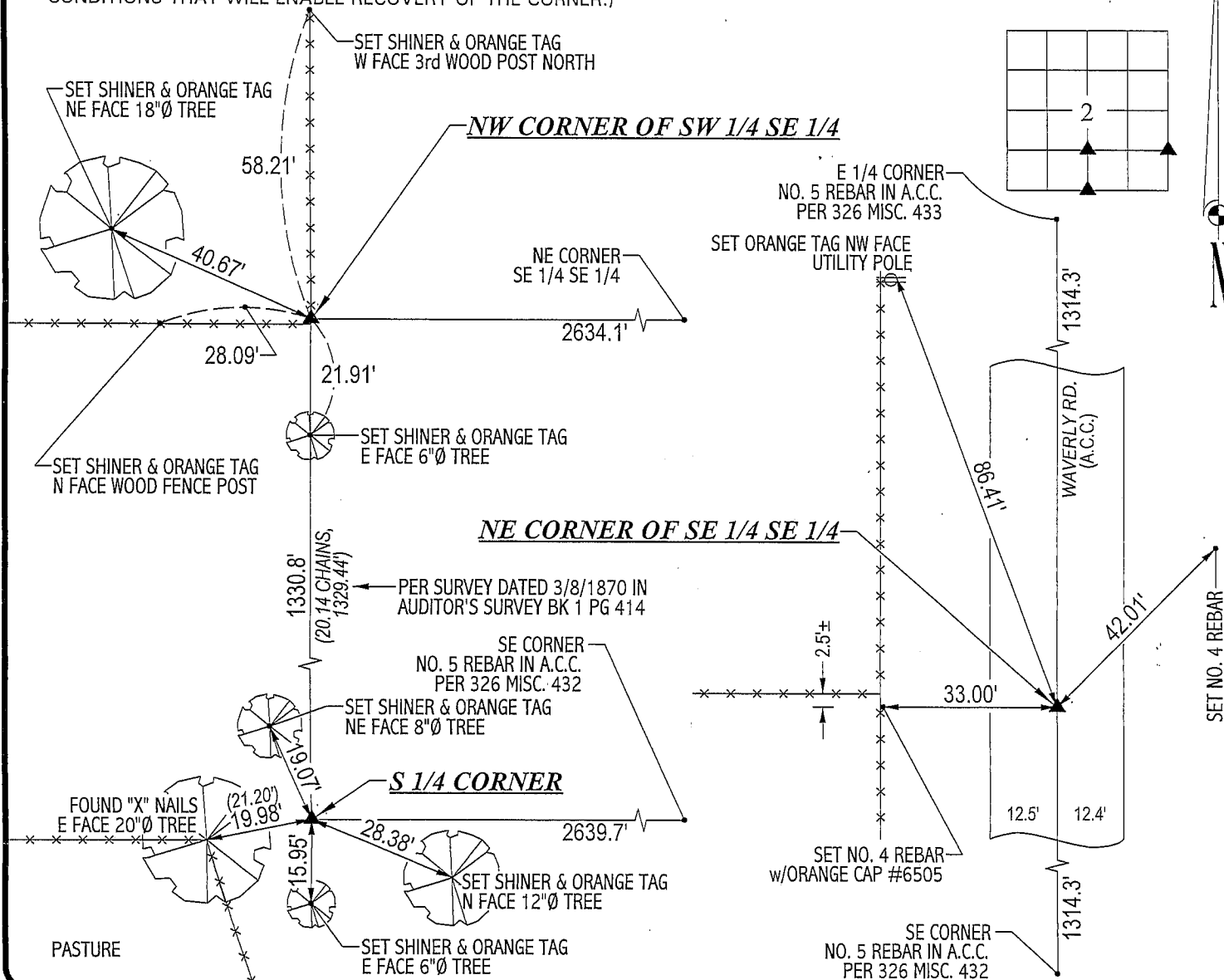
UNITED STATES PUBLIC LAND SURVEY CORNER CERTIFICATE
OFLAND SURVEY MONUMENTS SITUATED IN SECTION NO. 2, TOWNSHIP NO. 90 NORTH, RANGE
NO. 14 WEST OF THE FIFTH PRINCIPAL MERIDIAN, BLACK HAWK COUNTY, IOWA.PREVIOUSLY RECORDED IN BOOK 293, PAGE 278.(SHOW REASON FOR PREPARING THIS CERTIFICATE, THE EVIDENCE AND DETAILED PROCEDURES USED IN ESTABLISHING THE
CORNER POSITIONS AND MONUMENTATION FOUND OR PLACED.)

MONUMENT DESCRIPTION AND REMARKS:

REFERENCE TIES FOR S 1/4 CORNER OF SEC. 2 PER 293 MISC. 278 HAVE CHANGED. NO CORNER CERTIFICATES ON FILE FOR OTHER CORNERS.

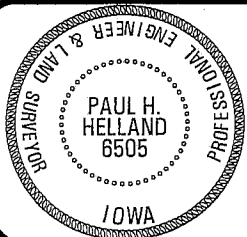
- S 1/4 CORNER: FOUND CONCRETE MONUMENT w/BRASS CAP PER 293 MISC. 278, ONE REMAINING REFERENCE TIE. SET NO. 4 REBAR ON NORTH SIDE OF C.M. FOR MAGNETIC DETECTION. TOP OF C.M. IS FLUSH w/SURFACE OF GROUND.
- NW CORNER OF SW 1/4 SE 1/4: SURVEY DATED 3/8/1870 IN AUDITOR'S SURVEY BK 1 PG 414 ESTABLISHED CORNER, BUT DOES NOT STATE WHAT WAS FOUND OR SET. FOUND 0.04'x0.12' IRON "I" BAR @ NORTH SIDE OF OLD CORNER POST UP 0.6'. IRON "I" BAR HAD PINK FLAGGING AND CORRESPONDS WELL TO DISTANCE FROM S 1/4 CORNER PER SURVEY DATED 3/8/1870.
- NE CORNER OF SE 1/4 SE 1/4: SET "MAG" NAIL IN A.C.C. PAVEMENT @ MIDPOINT OF THE EAST LINE OF SAID SE 1/4.

PLAN VIEW

(SHOW A MINIMUM OF THREE REFERENCE TIES TO DURABLE PHYSICAL OBJECTS, RELEVANT MONUMENTS AND PHYSICAL
CONDITIONS THAT WILL ENABLE RECOVERY OF THE CORNER.)HELLAND ENGINEERING & SURVEYING, LTD.
1107 Technology Parkway
Cedar Falls, Iowa 50613-6951
(319)-266-0161

(00.00') - RECORDED AS

FILE NAME: 03-167CC.DRG

I hereby certify that this land surveying document was prepared
and the related survey work was performed by me or under my
direct personal supervision and that I am a duly licensed Land
Surveyor under the laws of the State of Iowa.*Paul H. Helland 9/17/03*
Paul H. Helland
License Number 6505My license renewal date is December 31, 2003.
All pages or sheets are covered by this seal except:

LIST CORNERS TO BE INDEXED

CORNER	SECTION	TOWNSHIP	RANGE
S 1/4 CORNER	2	90N	14W
NW CORNER	2	90N	14W
SW 1/4 SE 1/4			
NE CORNER	2	90N	14W
SE 1/4 SE 1/4			