

SC
MISC
INDEX
MARGIN
PROOF
COMPARE

BLACK HAWK COUNTY IOWA:SS 022831
Filed for record FEB 21, 2002 at
3:00 P.M. and recorded in Book 345
of MISC Page 743
Patricia S. Jess Recorder
Fee 1-5.00X
HELLAND ENGINEERING & SURVEYING

Paul H. Helland, 1107 Technology Parkway, Cedar Falls, Iowa 50613-6951, (319)-266-0161

UNITED STATES PUBLIC LAND SURVEY CORNER CERTIFICATE OF

LAND SURVEY MONUMENTS SITUATED IN SECTION NO. 2, TOWNSHIP NO. 90 NORTH, RANGE
NO. 14 WEST OF THE FIFTH PRINCIPAL MERIDIAN, BLACK HAWK COUNTY, IOWA.

PREVIOUSLY RECORDED IN BOOK _____, PAGE _____.

(SHOW REASON FOR PREPARING THIS CERTIFICATE, THE EVIDENCE AND DETAILED PROCEDURES USED IN ESTABLISHING THE
CORNER POSITIONS AND MONUMENTATION FOUND OR PLACED.)

MONUMENT DESCRIPTION AND REMARKS:

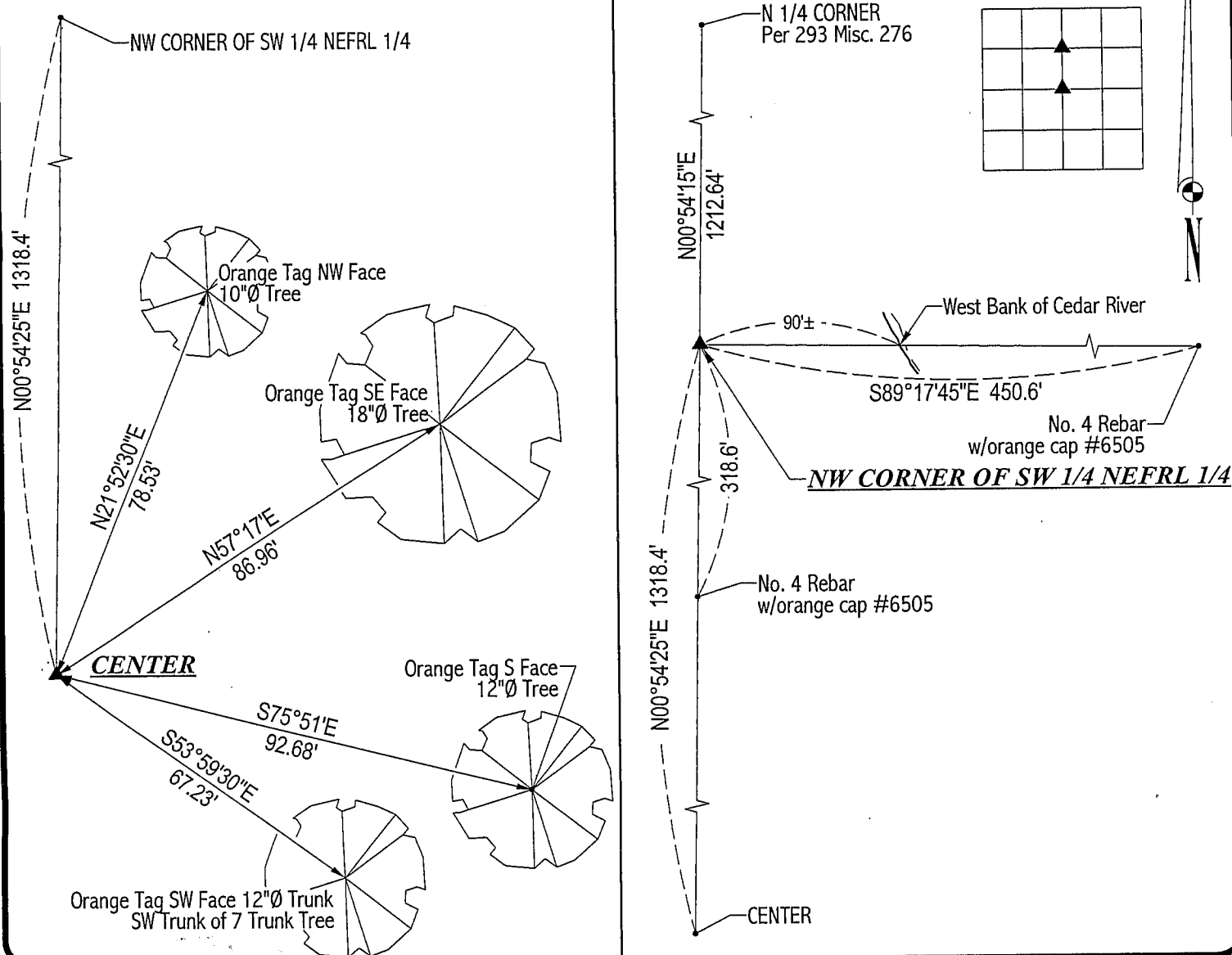
SURVEY DONE IN SW 1/4 NEFRL 1/4 OF SEC. 2-T90N-R12W.

NW CORNER OF SW 1/4 NEFRL 1/4: No county engineer reference ties exist. Found No. 5 rebar w/yellow cap #10793 per
Plat of Survey recorded in 293 Misc. 265, corner is 0.1' deep.

CENTER: No county engineer reference ties exist. Found No. 5 rebar w/yellow cap #10793 per Plat of Survey recorded
in 293 Misc. 265, corner is 1.0' deep next to T-post.

PLAN VIEW

(SHOW A MINIMUM OF THREE REFERENCE TIES TO DURABLE PHYSICAL OBJECTS, RELEVANT MONUMENTS AND PHYSICAL
CONDITIONS THAT WILL ENABLE RECOVERY OF THE CORNER.)

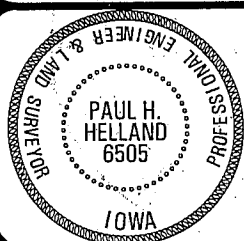


HELLAND ENGINEERING & SURVEYING, LTD.
1107 Technology Parkway
Cedar Falls, Iowa 50613-6951
(319)-266-0161

FILE NAME: 02-115CC.DRG

LIST CORNERS TO BE INDEXED

CORNER	SECTION	TOWNSHIP	RANGE
NW CORNER	2	90N	14W
SW 1/4 NEFRL 1/4			
CENTER	2	90N	14W



I hereby certify that this land surveying document was prepared
and the related survey work was performed by me or under my
direct personal supervision and that I am a duly licensed Land
Surveyor under the laws of the State of Iowa.

Paul H. Helland 2/7/02
Paul H. Helland
License Number 6505
My license renewal date is December 31, 2003.
All pages or sheets are covered by this seal except:

BOOK 0345 743