

*Prepared by & Return to: Herold - Reicks Surveying, 2206 East Bremer Avenue, Waverly, IA 50677, Ph. 319-483-5187

United States Public Land Survey Corner Certificate

Land Survey Monument situated in
Section **1**, Township **90** North, Range **14** West of the Fifth Principal Meridian, **Black Hawk** County, Iowa.
Not on file in the County Recorder's office.

This certificate is being prepared in compliance with Iowa Code Chapter 355.11 because:

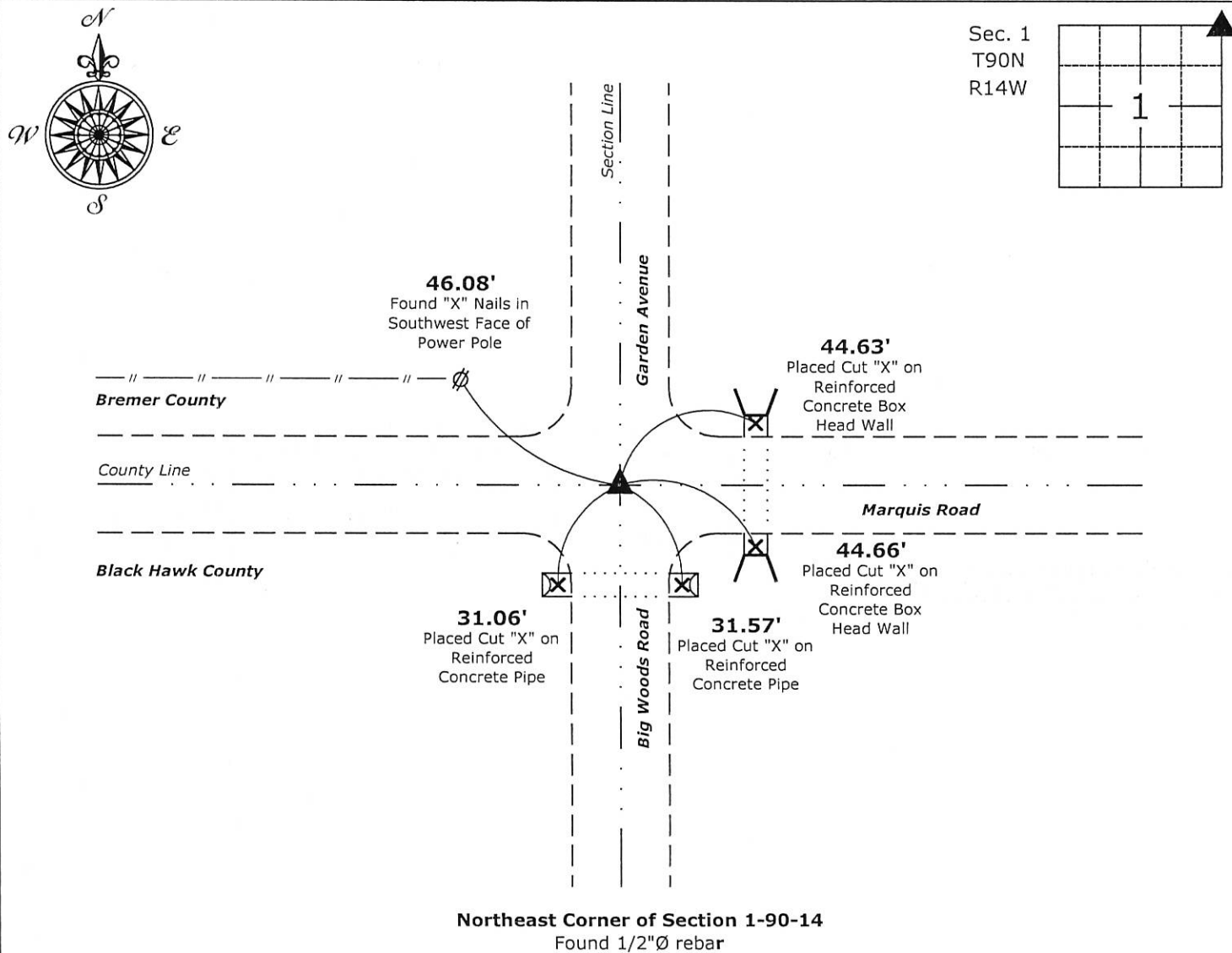
- ☒ There is no certificate on file for this corner.
☐ There are no longer three valid ties of record.
☐ There are changes to reference ties of record.
☐ There is change of monumentation of record.
☐ To clarify description of record monument (ties).

Monument Description and Remarks:

Northeast Corner: Found 1/2"Ø rebar, 6' deep, with information obtained from the County Engineers office.

Plan View

(Show a minimum of three reference ties to durable physical objects, relevant monuments and physical conditions that will enable recovery of the corner.)



I hereby certify that this land surveying document was prepared and the related survey work was performed by me or under my direct personal supervision and that I am a duly licensed Land Surveyor under the laws of the State of Iowa.

Isaiah M. Reicks 10-10-17
Isaiah M. Reicks Date:

License number 22468

My license renewal date is December 31, 2017.
Sheets covered by this seal: Individual sheet only

List Corner to be Indexed

Corner	Section	Twp.	Range
NE	1	90	14

Project Number: 2017-556

FB: Bremer 11, Pgs. 76-77