

*Prepared by & Return to: Herald - Reicks Surveying, 2206 East Bremer Avenue, Waverly, IA 50677, Ph. 319-483-5187

United States Public Land Survey Corner Certificate

Land Survey Monument situated in
Section 1, Township 90 North, Range 14 West of the Fifth Principal Meridian, **Black Hawk County, Iowa.**
On file in Document #2017-6229 the County Recorder's office.

This certificate is being prepared in compliance with Iowa Code Chapter 355.11 because:



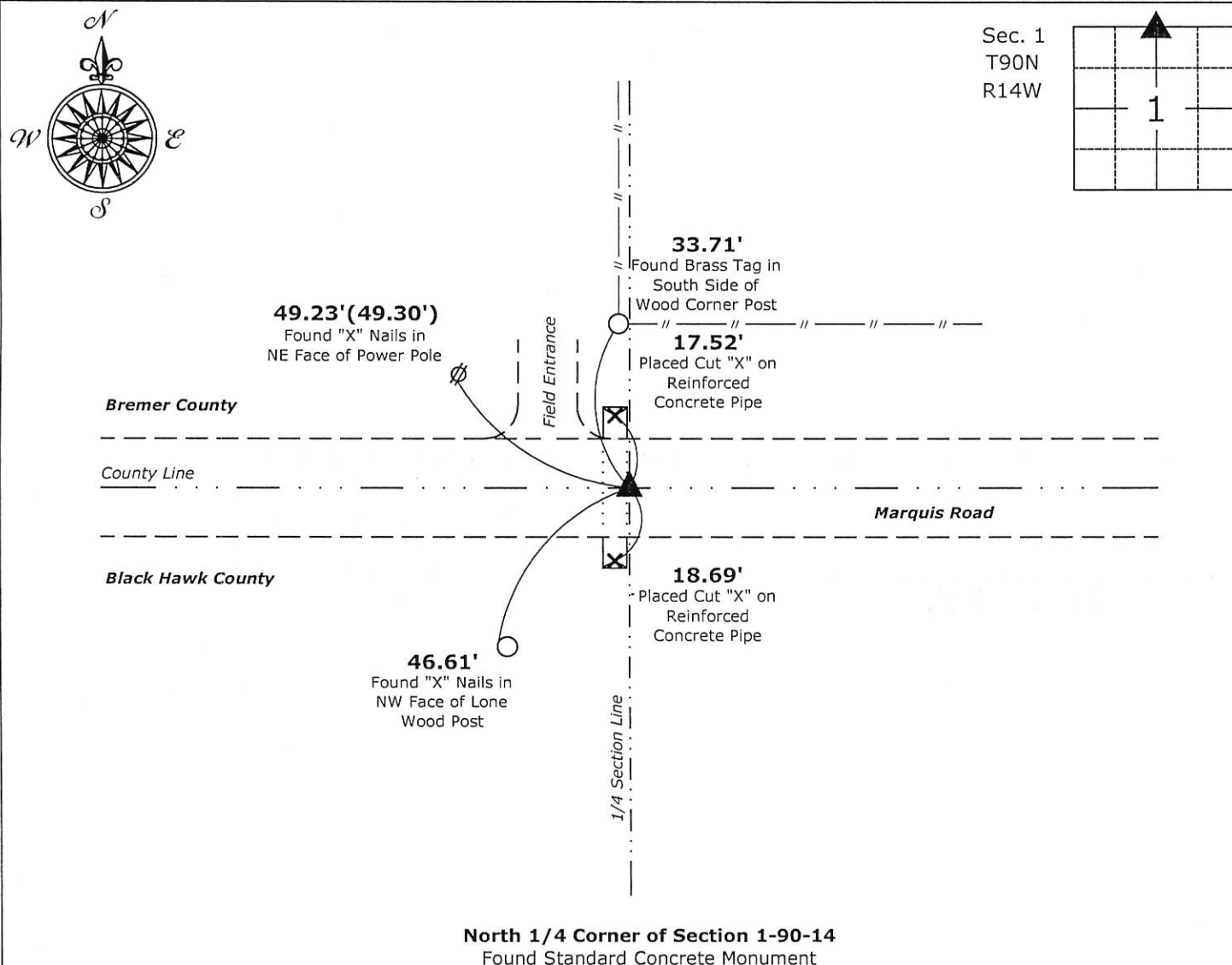
- ☐ There is no certificate on file for this corner.
- ☐ There are no longer three valid ties of record.
- ☐ There are changes to reference ties of record.
- ☒ There is change of monumentation of record.
- ☐ To clarify description of record monument (ties).

Monument Description and Remarks:

North 1/4 Corner: The previously recorded section corner certificate indicates "Found No.4 Rebar". While recovering the corner, we found a 1/2" Rebar, 8" Long, 1" deep, in unstable condition. Continued to excavate and Found a Standard Concrete Monument, 9" deep, with information obtained from the Black Hawk County Engineers office. Accepted the lower monument to perpetuate the corner.

Plan View

(Show a minimum of three reference ties to durable physical objects, relevant monuments and physical conditions that will enable recovery of the corner.)



I hereby certify that this land surveying document was prepared and the related survey work was performed by me or under my direct personal supervision and that I am a duly licensed Land Surveyor under the laws of the State of Iowa.

Isaiah M. Reicks 10-10-17
Isaiah M. Reicks Date:

License number 22468
My license renewal date is December 31, 2017.
Sheets covered by this seal: Individual sheet only

List Corner to be Indexed

Corner	Section	Twp.	Range
N 1/4	1	90	14

Project Number: 2017-556

FB: Bremer 11, Pgs. 76-77