

Reserved for County Recorder's use

2025-04659

RECORDED: 04/09/2025 01:19:19 PM

RECORDING FEE: \$7.00

REVENUE TAX: \$

COMBINED FEE: \$7.00

SANDIE L. SMITH, RECORDER
BLACK HAWK COUNTY, IOWA

Kyle J Helland, 6109 Chancellor Drive, Cedar Falls, Iowa 50613-6916, (319)-266-0161

UNITED STATES PUBLIC LAND SURVEY CORNER CERTIFICATE OF

LAND SURVEY MONUMENTS SITUATED IN SECTION NO 1, TOWNSHIP NO 90 NORTH, RANGE NO 14 WEST OF THE FIFTH PRINCIPAL MERIDIAN, BLACK HAWK COUNTY, IOWA
PREVIOUSLY RECORDED IN N/A

(SHOW REASON FOR PREPARING THIS CERTIFICATE, THE EVIDENCE AND DETAILED PROCEDURES USED IN ESTABLISHING THE CORNER POSITIONS AND MONUMENTATION FOUND OR PLACED)

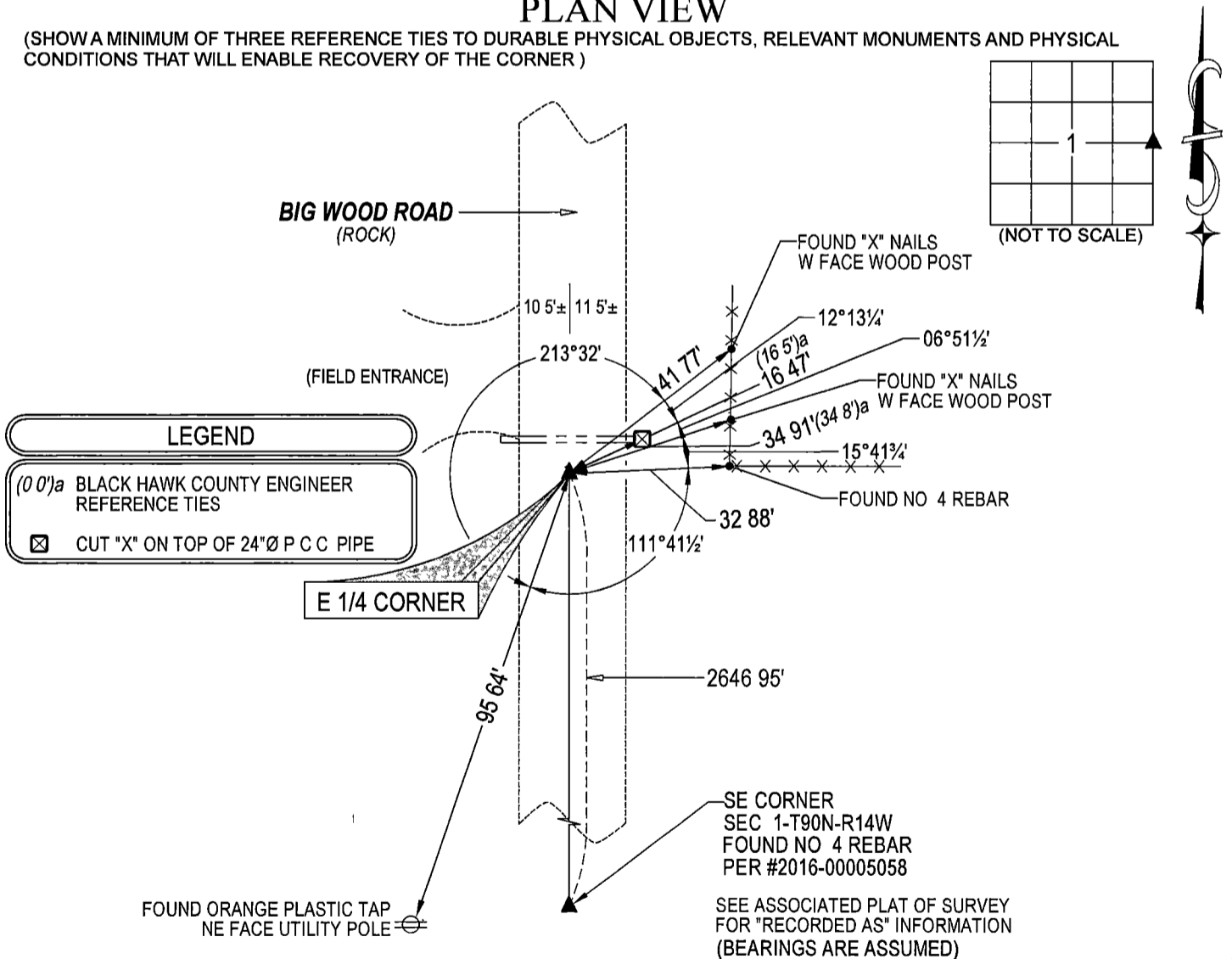
MONUMENT DESCRIPTION AND REMARKS

NO USPLSCC ON FILE. SURVEY COMPLETED IN THE SW FRL 1/4 OF SEC. 6-T90N-R13W

→ **E 1/4 CORNER:** BLACK HAWK COUNTY ENGINEER TIES CALLS FOR [CONCRETE MONUMENT] WPA NOTES PAGE 31 DATED 08/18/1938 CALLS FOR [FOUND LIMSTONE 4½" x 8½" x 20½" AND IRON BAR 5/8" x 24½" ALSO PIECE OF OAK STAKE LOWERED STONE AND SET C M ON TOP 12" BELOW GROUND AND PLACED IRON BAR ON S SIDE] WPA NOTES PAGE 23 DATED 03/26/1941 CALLS FOR [S C M STONE IS OK] SEARCHED AREA WITH MAGNETIC DETECTOR AND FOUND NO 4 REBAR 0.6'± LONG, REMOVED AND EXCAVATED AND FOUND STANDARD CONCRETE MONUMENT WITH BRASS CAP 0.6'± DEEP SET FOUND NO 4 REBAR (0 6' LONG) ON NORTH SIDE AT MONUMENT DEPTH FOR MAGNETIC DETECTION AND UTILIZED SAID STANDARD CONCRETE MONUMENT WITH BRASS CAP AS CORRECT CORNER

PLAN VIEW

(SHOW A MINIMUM OF THREE REFERENCE TIES TO DURABLE PHYSICAL OBJECTS, RELEVANT MONUMENTS AND PHYSICAL CONDITIONS THAT WILL ENABLE RECOVERY OF THE CORNER)



HELLAND ENGINEERING & SURVEYING, LTD
6109 Chancellor Drive
Cedar Falls, Iowa 50613-6916
(319)-266-0161

BRASS TAG = 4d NAIL & 13/16"Ø BRASS TAG DRAWN BY CDR SHINER = 1"Ø STEEL SHINER w/MASONRY NAIL
OPC = PLASTIC CAP (O=ORANGE, R=RED, Y=YELLOW)
(00') RECORDED AS FILE NAME 25-125-26 DWG



I hereby certify that this land surveying document was prepared and the related survey work was performed by me or under my direct personal supervision and that I am a duly licensed Professional Land Surveyor under the laws of the State of Iowa.
Kyle J Helland 04/07/2025
Kyle J Helland
License Number 23212
My license renewal date is December 31, 2025
All pages or sheets are covered by this seal except

LIST CORNERS TO BE INDEXED			
CORNER	SECTION	TOWNSHIP	RANGE
E 1/4 CORNER	1	90N	14W
W 1/4 CORNER	6	90N	13W