

Number: 202000021446  
Recorded: 6/8/2020 at 12:19:56.0 PM  
County Recording Fee: \$7.00  
Iowa E-Filing Fee: \$3.00  
Combined Fee: \$10.00  
Revenue Tax:  
Sandie L. Smith, RECORDER  
Black Hawk County, Iowa

Prepared by & Return to: Herold - Reicks Surveying, 2206 East Bremer Avenue, Waverly, IA 50677, Ph. 319-483-5187

United States Public Land Survey Corner Certificate

Land Survey Monument situated in  
Section 36, Township 90 North, Range 13 West of the Fifth Principal Meridian, **Black Hawk** County, Iowa.  
Not On file in the County Recorder's office.

This certificate is being prepared in compliance with Iowa Code Chapter 355.11 because:

- 
- ☒

There is no certificate on file for this corner.

☐

There are no longer three valid ties of record.

☐

There are changes to reference ties of record.

☐

There is change of monumentation of record.

☐

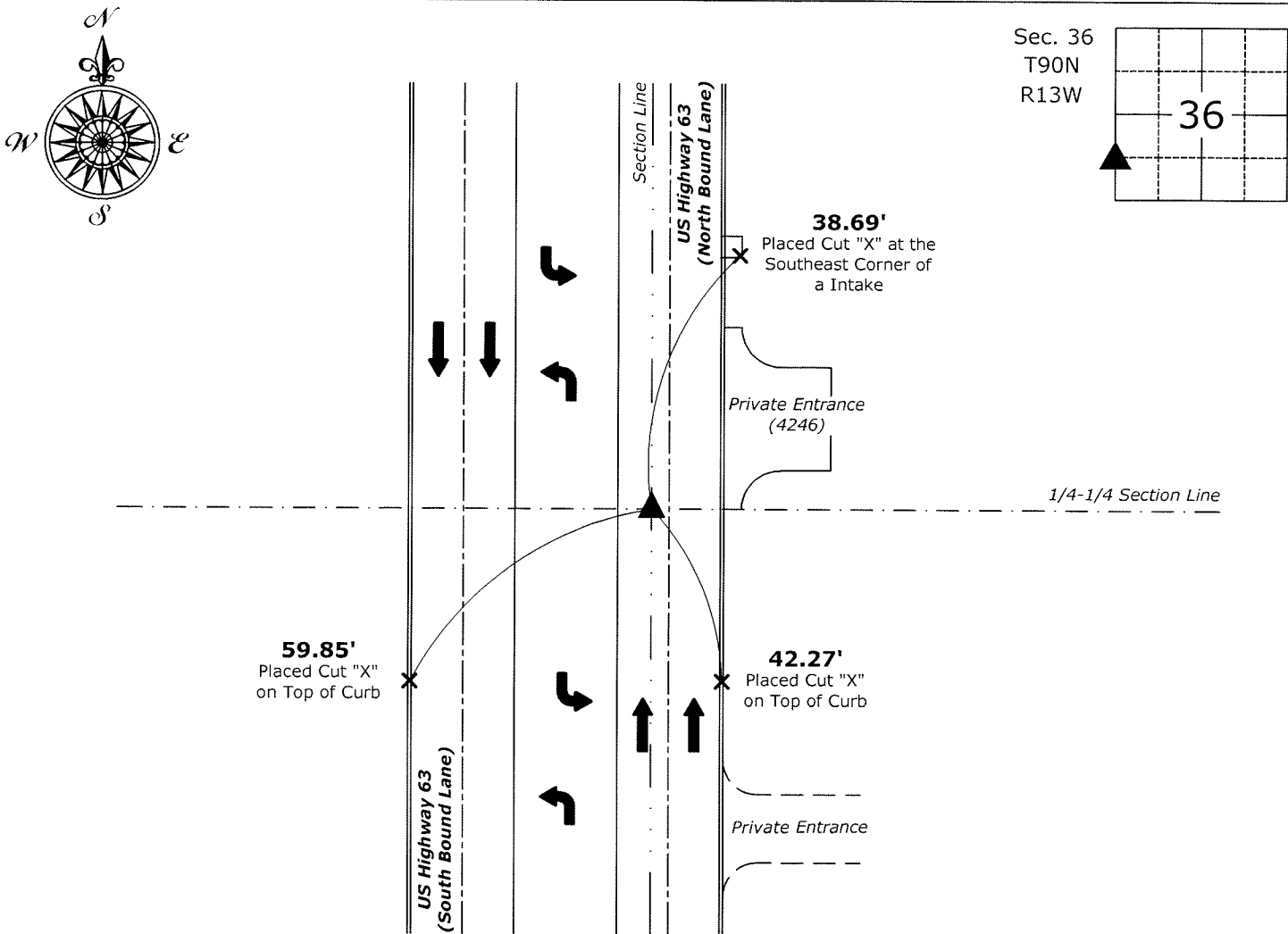
To clarify description of record monument (ties).

Monument Description and Remarks:

**Northwest Corner SW 1/4 - SW 1/4:** Set 1"Ø Bronze Survey Marker PLS 22468 equidistant and on line between the West Quarter and Southwest Corners of Said Section.

Plan View

(Show a minimum of three reference ties to durable physical objects, relevant monuments and physical conditions that will enable recovery of the corner.)



**Northwest Corner SW 1/4 - SW 1/4 of Section 14-90-13**  
Set 1"Ø Bronze Survey Marker PLS 22468



I hereby certify that this land surveying document was prepared and the related survey work was performed by me or under my direct personal supervision and that I am a duly licensed Land Surveyor under the laws of the State of Iowa.  
*Isaiah M. Reicks* 6-8-20  
Isaiah M. Reicks Date:  
License number 22468  
My license renewal date is December 31, 2021.  
Sheets covered by this seal: Individual sheet only

List Corner to be Indexed			
Corner	Section	Twp.	Range
NW-SW-SW	36	90	13
Project Number: 2020-526			
File Number: 2020-00021446 Seq: 1			