

Number: 202000021443
Recorded: 6/8/2020 at 12:19:56.0 PM
County Recording Fee: \$7.00
Iowa E-Filing Fee: \$3.00
Combined Fee: \$10.00
Revenue Tax:
Sandie L. Smith, RECORDER
Black Hawk County, Iowa

Prepared by & Return to: Herold - Reicks Surveying, 2206 East Bremer Avenue, Waverly, IA 50677, Ph. 319-483-5187

United States Public Land Survey Corner Certificate

Land Survey Monument situated in
Section 36, Township 90 North, Range 13 West of the Fifth Principal Meridian, Black Hawk County, Iowa.
On file in Book 323, Page 415 in the County Recorder's office.

This certificate is being prepared in compliance with Iowa Code Chapter 355.11 because:

-
- ☐

☒

☒

☐

☐
- There is no certificate on file for this corner.

There are no longer three valid ties of record.

There are changes to reference ties of record.

There is change of monumentation of record.

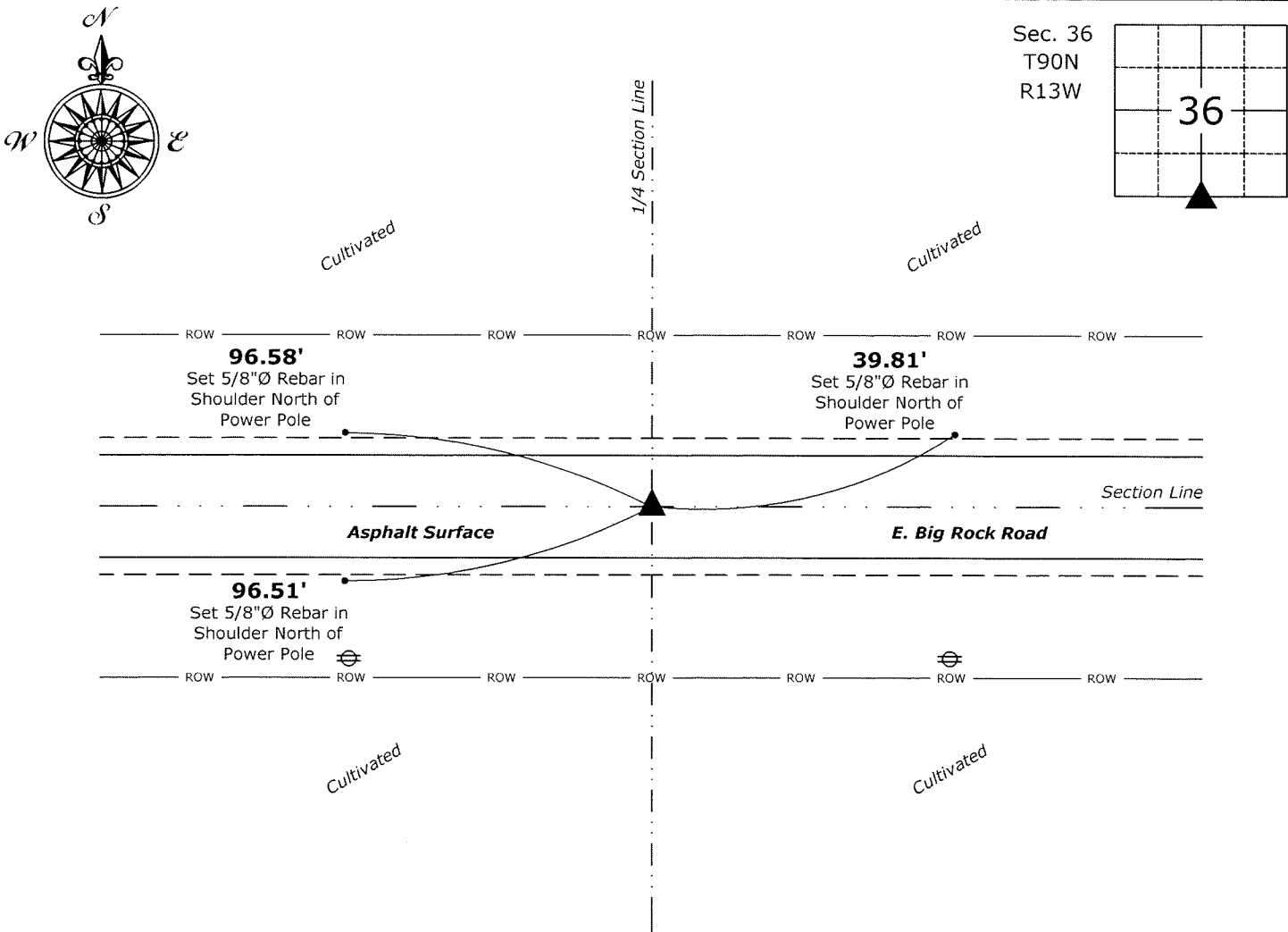
To clarify description of record monument (ties).

Monument Description and Remarks:

South 1/4 Corner: Found 1/2"Ø Iron Pin, 8" Deep (Bent). Removed and Reset 5/8"Ø Rebar with 2"Ø Aluminum Cap PLS 22468 @ Straight Portion, 2" Deep Below Asphalt Surface, with information obtained from previous Section Corner Certificate.

Plan View

(Show a minimum of three reference ties to durable physical objects, relevant monuments and physical conditions that will enable recovery of the corner.)



South 1/4 Corner of Section 36-90-13
Found 1/2"Ø Iron Pin, 8" Deep (Bent). Removed and Reset 5/8"Ø Rebar w/2"Ø Aluminum Cap PLS 22468



I hereby certify that this land surveying document was prepared and the related survey work was performed by me or under my direct personal supervision and that I am a duly licensed Land Surveyor under the laws of the State of Iowa.

Isaiah M. Reicks 6-8-20
Isaiah M. Reicks Date:
License number 22468
My license renewal date is December 31, 2021.
Sheets covered by this seal: Individual sheet only

List Corner to be Indexed			
Corner	Section	Twp.	Range
S 1/4	36	90	13
Project Number: 2020-526			
File Number: 2020-00021443 Seq: 1			