

BLACK HAWK COUNTY ENGINEERS OFFICE

PREPARED BY: BLACK HAWK COUNTY ENGINEERS OFFICE
316 E. FIFTH STREET, ROOM 211 WATERLOO, IOWA 50703

PH.# (319) 833-3008
FAX.# (319) 833-3139

SLSI 9-94
CERT 12-96

UNITED STATES PUBLIC LAND SURVEY CORNER CERTIFICATE OF
Land Survey Monuments situated in Section 36 , Township 90 N ,
Range 13 W , of the Fifth Principal Meridian, BLACK HAWK County, Iowa.
Previously recorded in Misc. Book N/A , Page N/A , in County Recorder's Office.

(Show reason for preparing this certificate, the evidence and detailed procedures used in establishing the corner positions and monumentation found or placed.)

Monument Description and Remarks: FND. #5 RBR. PRIOR TO RESURFACING.
RE-EST. #5 RBR. x 5" L. FLUSH w/ ACC SURFACE @ C.L. INTERSECTION
LOC. +/- 0.10' SOUTH OF C.L. E/W ACC JOINT.
GEOMETRIC DEFLECTION & LAND CORNER REFERENCES OF CORNER PER RTK
GPS MEASURE, JUNE 2001.
CORNER UPDATED DUE TO ACC RESURFACING PROJECT, JULY-AUG. 2004.

PLAN - VIEW

(Show a minimum of three reference ties to durable physical objects, relevant monuments and physical conditions that will enable recovery of the corner.)

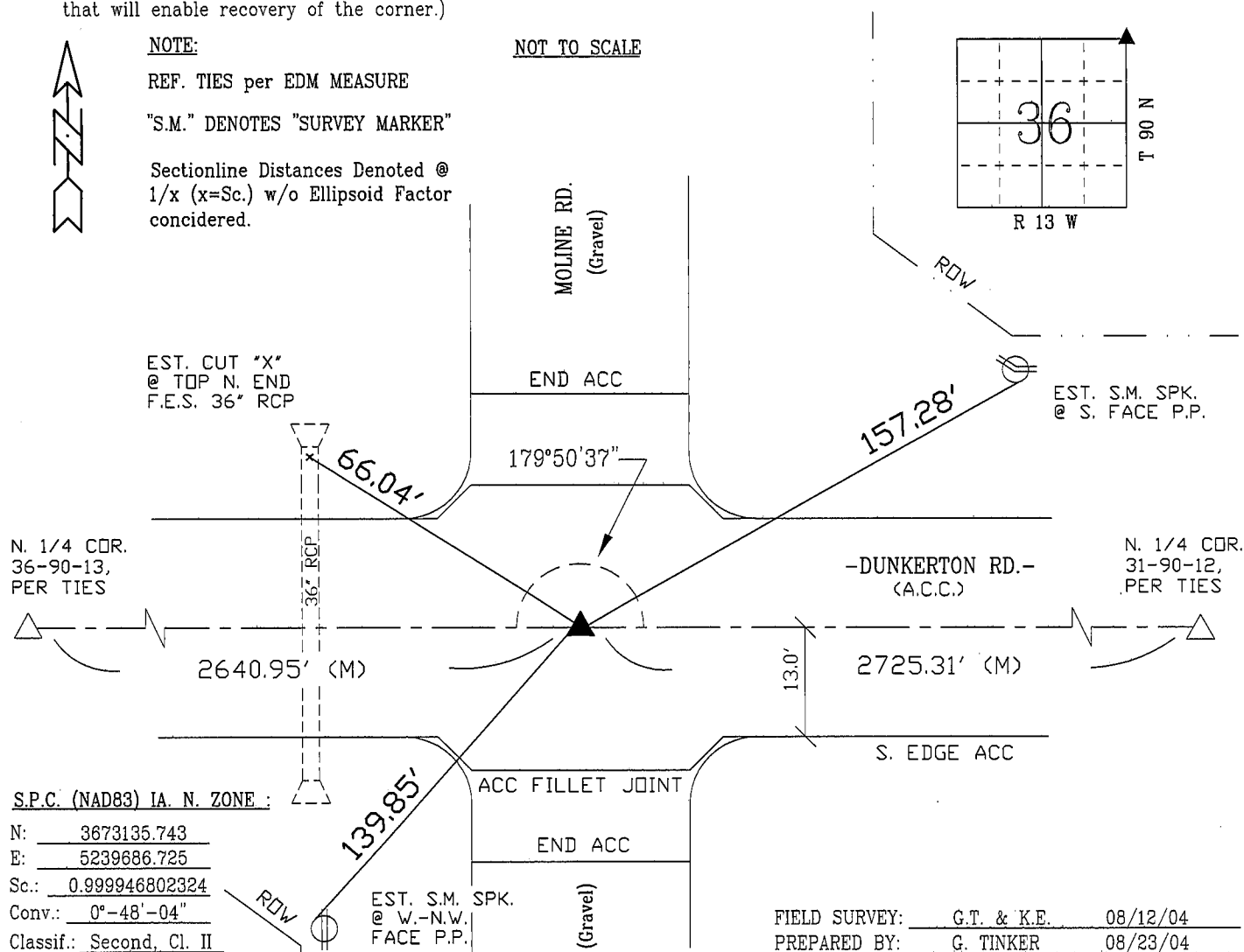
NOTE:

REF. TIES per EDM MEASURE

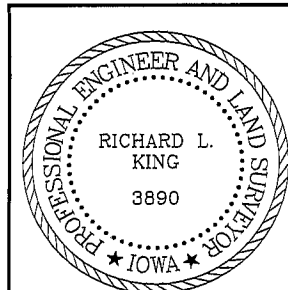
"S.M." DENOTES "SURVEY MARKER"

Sectionline Distances Denoted @
1/x (x=Sc.) w/o Ellipsoid Factor
considered.

NOT TO SCALE



CERTIFICATION



I hereby certify that this land surveying document was prepared and the related survey work was performed by me or under my direct personal supervision and that I am a duly licensed Land Surveyor under the laws of the State of Iowa.

Richard L. King E/BH/CS
Richard L. King (date)

License Number 3890

My license renewal date is December 31, 2005

Pages or sheets covered by this seal:

This Land Corner Certificate Only.

LIST CORNERS TO BE INDEXED

<u>Corner</u>	<u>Section</u>	<u>- Township</u>	<u>- Range</u>
N.E. COR.	36	90 N	13 W
S.E. COR.	25	90 N	13 W
N.W. COR.	31	90 N	12 W
S.W. COR.	30	90 N	12 W