

PREPARED BY: BLACK HAWK COUNTY ENGINEERS OFFICE
316 E. FIFTH STREET, ROOM 211 WATERLOO, IOWA 50703

PH.# (319) 291-2419 SLSI 9-94
FAX.# (319) 291-2461 CERT 12-96

UNITED STATES PUBLIC LAND SURVEY CORNER CERTIFICATE OF

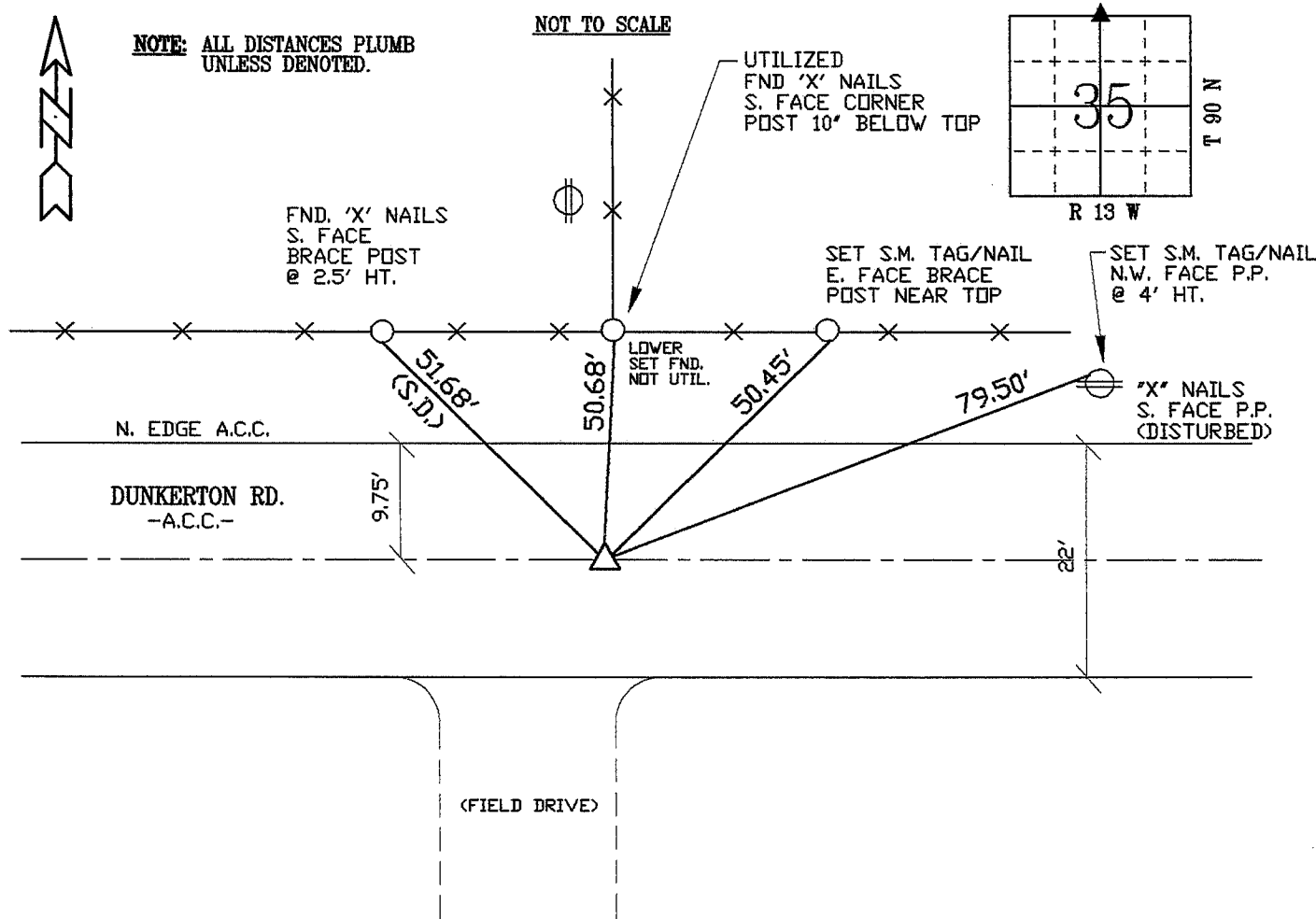
Land Survey Monuments situated in Section 35, Township 90 N,
Range 13 W, of the Fifth Principal Meridian, BLACK HAWK County, Iowa.
Previously recorded in Misc. Book N/A, Page N/A, in County Recorder's Office.

(Show reason for preparing this certificate, the evidence and detailed procedures used in establishing the corner positions and monumentation found or placed.)

Monument Description and Remarks: FOUND LEAD PLUG CENTERLINE P.C.C.
SURFACE AS DENOTED. RE-ESTABLISHED WITH 5/8" REBAR x 6' L.
CORNER RETIED DUE TO A.C.C. RESURFACING PROJECT.

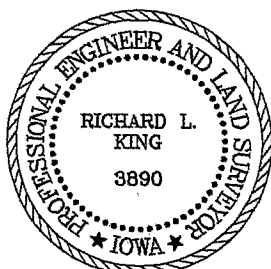
PLAN - VIEW

(Show a minimum of three reference ties to durable physical objects, relevant monuments and physical conditions that will enable recovery of the corner.)



FIELD SURVEY:	G.T. & E.G.	07/29/98
PREPARED BY:	E.G. & G.T.	09/25/98

CERTIFICATION



I hereby certify that this land surveying document was prepared and the related survey work was performed by me or under my direct personal supervision and that I am a duly licensed Land Surveyor under the laws of the State of Iowa.

Richard L. King 9/25/98
(date)

License Number 3890
My license renewal date is December 31, 1999

Pages or sheets covered by this seal:
This Land Corner Certificate Only.

LIST CORNERS TO BE INDEXED

Corner Section - Township - Range
N. 1/4 35 90 N 13 W

BOOK 331 PAGE 708