

Record

UNITED STATES PUBLIC LAND SURVEY CORNER CERTIFICATE

OF

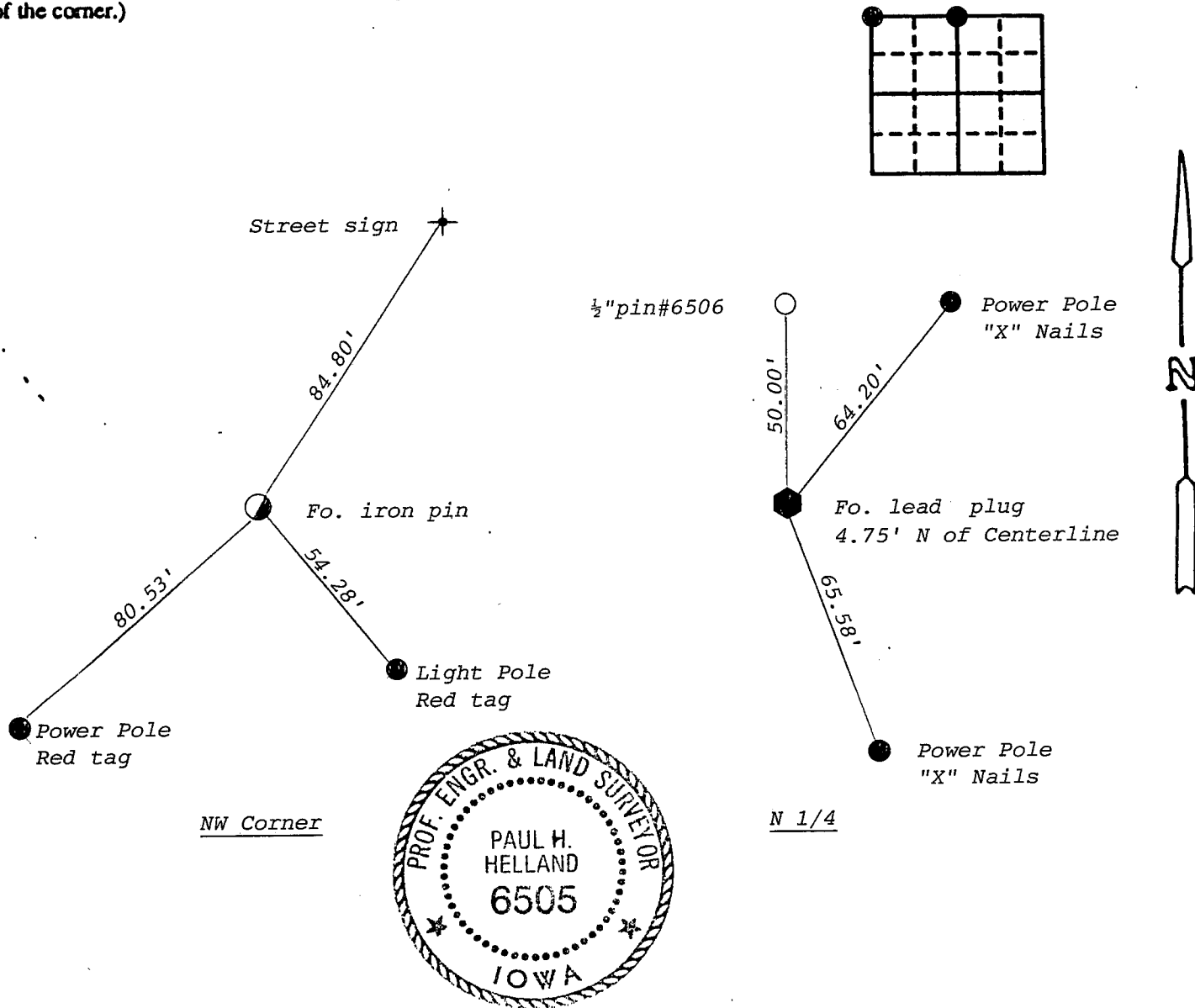
Survey Monuments situated in Section 34, Township 90, Range 13, of the Fifth Principal Meridian, Black Hawk County, Iowa.
Previously recorded in Book _____, Page _____.

(Show reason for preparing this certificate, the evidence and detailed procedures used in establishing the corner positions and monumentation found or placed.)

Monument Description and Remarks: Survey done in S E 1/4 SW 1/4 Sec. 27-90-13
NW Corner (Sec. 34) - Found iron pin
N 1/4 (Sec. 34) - Found lead plug

PLAN - VIEW

(Show a minimum of three reference ties to durable physical objects, relevant monuments and physical conditions that will enable recovery of the corner.)



I hereby certify that the survey work was completed and this certificate was prepared by me or under my direct personal supervision and that I am a duly registered land surveyor under the laws of the state of Iowa.

Paul H. Helland 3/5/91
REGISTERED LAND SURVEYOR NO. 6505

List Corners to be Indexed

Corners	Section	Twp	Range
NW	34	90	13
N 1/4	34	90	13

SEAL

MISC. BK. 294 p. 942