

UNITED STATES PUBLIC LAND SURVEY CORNER CERTIFICATE

OF

Land Survey Monuments situated in Section 33, Township 30N, Range 13W, of the Fifth Principal Meridian, BLACK HAWK County, Iowa. Previously recorded in N/A in County Recorder's Office.

(book, page, document number, etc.)

(Show reason for preparing this certificate, the evidence and detailed procedures used in establishing the corner positions and monumentation found or placed.)

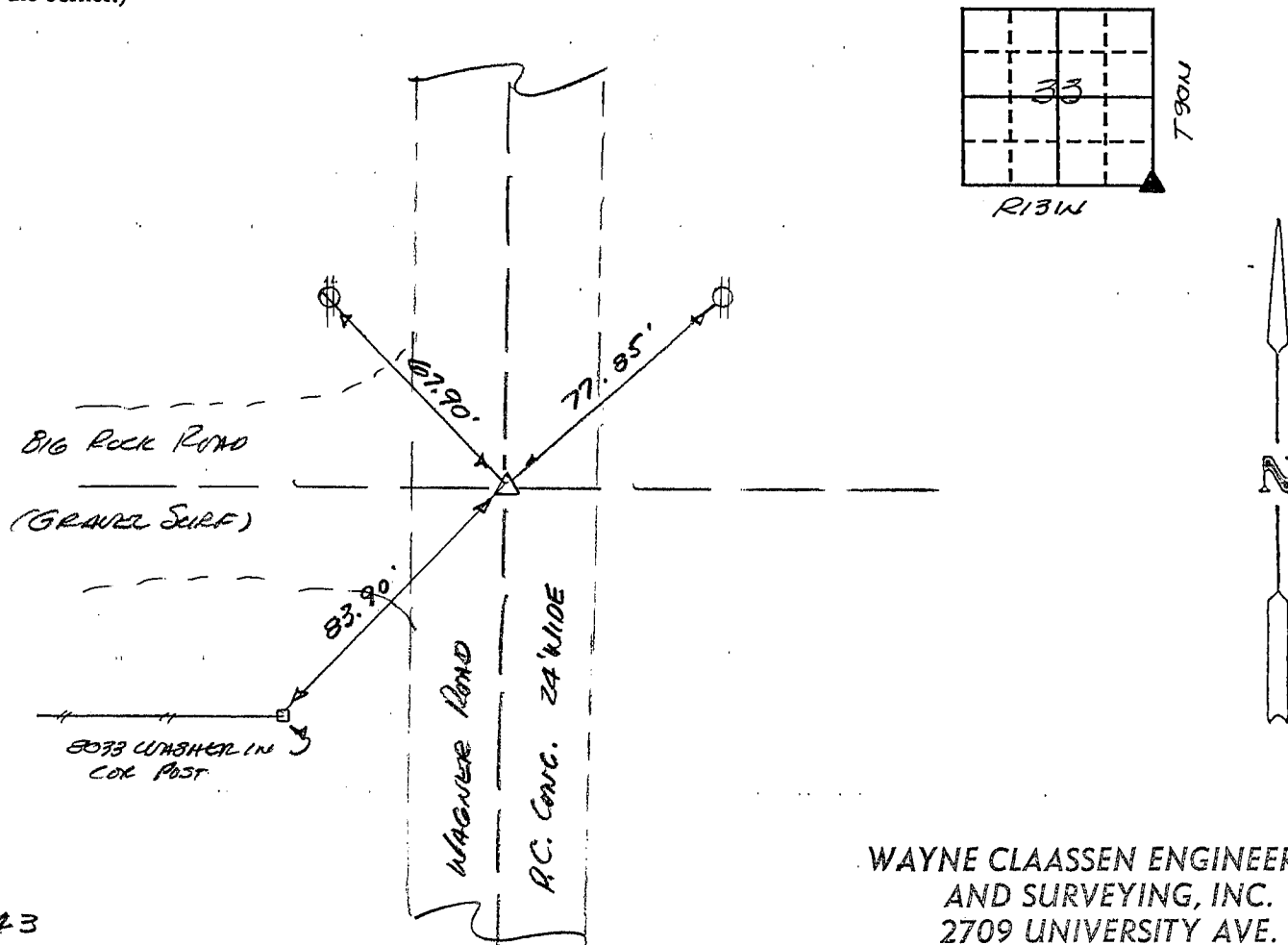
Monument Description and Remarks: FOUND ALUM. MON. IN CONC. DRAINING SET BY CES

AFTER WAGNER ROAD PAVING PROJECT 1985+. CES HAD FOUND 3/4" Ø

REBAR AT THIS CORNER IN 1982..

PLAN - VIEW

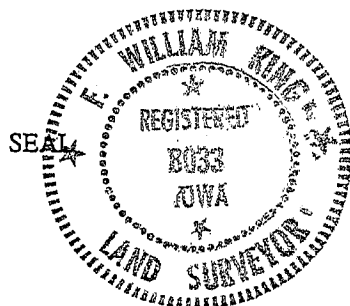
(Show a minimum of three reference ties to durable physical objects, relevant monuments and physical conditions that will enable recovery of the corner.)



335-43

WAYNE CLAASSEN ENGINEERING
AND SURVEYING, INC.
2709 UNIVERSITY AVE.
P.O. BOX 898
WATERLOO, IA 50704

I hereby certify that the survey work was completed and this certificate was prepared by me or under my direct personal supervision and that I am a duly registered land surveyor under the laws of the state of Iowa.

Signature: F. William KingName typed or printed: F. WILLIAM KINGDate: 1-5-1995 Reg. No. 8033

Corners	List Corners to be Indexed		
	Section	Twp	Range
SE	33	20N	13W
NE	4	89N	13

MISC. BK. 314 p. 89