

11
sc
Misc
INDEX
MARGIN
PROOF
COMPARE

BLACK HAWK COUNTY IOWA:SS
Filed for record Sep 25, 19 98 at
11:30 A.M. and recorded in Book 331
of Misc Page 673
Recorder
FEE n/c
ENGINEER'S OFFICE

7067

PREPARED BY: BLACK HAWK COUNTY ENGINEERS OFFICE
316 E. FIFTH STREET, ROOM 211 WATERLOO, IOWA 50703

PH.# (319) 291-2419
FAX# (319) 291-2461
SLSI 9-94
CERT 12-96

UNITED STATES PUBLIC LAND SURVEY CORNER CERTIFICATE OF
Land Survey Monuments situated in Section 33, Township 90 N,
Range 13 W, of the Fifth Principal Meridian, BLACK HAWK County, Iowa.
~~Previously recorded in Misc. Book 310, Page 153, in County Recorder's Office.~~

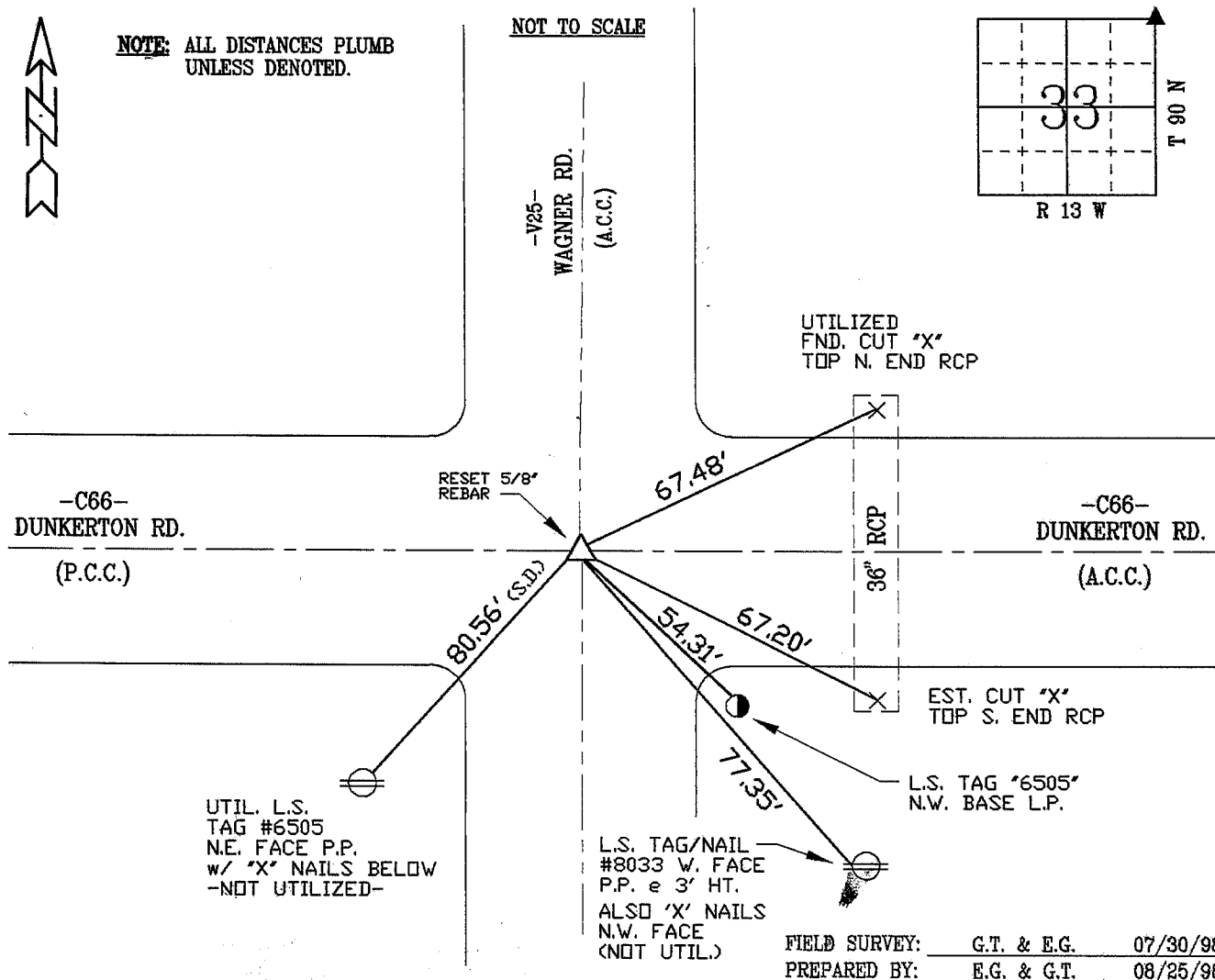
(Show reason for preparing this certificate, the evidence and detailed procedures used in establishing the corner positions and monumentation found or placed.)

Monument Description and Remarks: FOUND LEAD PLUG CENTERLINE P.C.C.
AT INT. OF WAGNER RD. AND DUNKERTON ROAD. REPLACE WITH 5/8" REBAR
x 6" L. @ A.C.C. SURFACE.

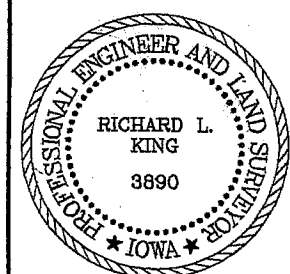
TIES TO S.W. AND N.E. AGREE WITH THAT OF CURRENT RECORD.
RETIED DUE TO A.C.C. RESURFACING PROJECT.

PLAN - VIEW

(Show a minimum of three reference ties to durable physical objects, relevant monuments and physical conditions that will enable recovery of the corner.)



CERTIFICATION



I hereby certify that this land surveying document was prepared and the related survey work was performed by me or under my direct personal supervision and that I am a duly licensed Land Surveyor under the laws of the State of Iowa.

Richard L. King 9/21/98
Richard L. King (date)

License Number 3890

My license renewal date is December 31, 1999

Pages or sheets covered by this seal:

This Land Corner Certificate Only.

LIST CORNERS TO BE INDEXED

Corner Section - Township - Range
N.E. COR. 33 90 N 13 W

BOOK 331 PAGE 673