

2025-01680
RECORDED: 02/05/2025 02:23:48 PM
RECORDING FEE: \$7.00
IOWA E-FILING FEE: \$3.13
COMBINED FEE: \$10.13
REVENUE TAX: \$0.00
SANDIE L. SMITH, RECORDER
BLACK HAWK COUNTY, IOWA

Prepared / Return To: Matthew A. Kofa, P.L.S., VJ Engineering, 1501 Technology Parkway, Suite 100, Cedar Falls, Iowa, 50613, (319) 266-5829

United States Public Land Survey Corner Certificate of

Land Survey Monuments situated in Section No. 33, Township No. 90 North,
Range No. 13 West, of the Fifth Principal Meridian, Black Hawk County, Iowa
Previously recorded in N/A.

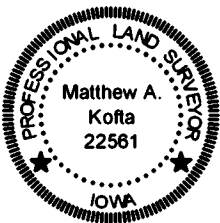
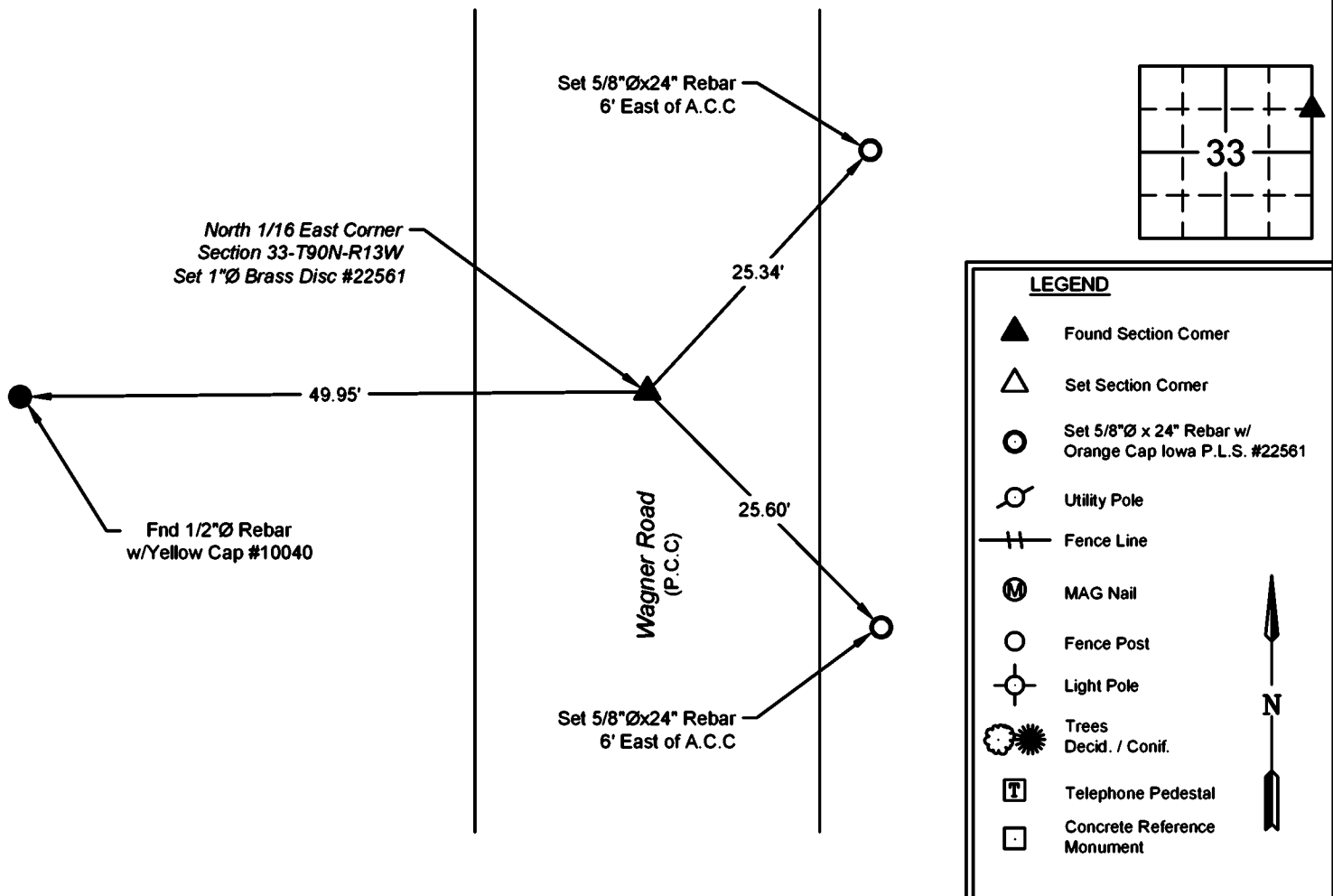
Show reason for preparing this certificate, the evidence and detailed procedures used in establishing the corner positions and monumentation found or placed.

Monument Description and Remarks: North 1/16 Corner -- Section 33-T90N-R13W

Plat of Survey 329 Misc 869 states that a Cut "X" was set at the corner. Plat of Survey 331 Misc 841 and 337 Misc 331 state that a PK Nail is at the corner. Searched area as indicated and did not find called for monument. Reestablished location per Plats of Survey and set a 1"Ø Brass Disc PLS No. 22561 flush with the surface of the road.
No previous corner certificate of record.

PLAN - VIEW

(Show a minimum of three reference ties to durable physical objects, relevant monuments and physical conditions that will enable recovery of the corner.)



I hereby certify that this land surveying document was prepared and the related survey work was performed by me or under my direct personal supervision and that I am a duly licensed Land Surveyor under the laws of the State of Iowa.

Matthew A. Kofa, P.L.S.
License Number 22561
My license renewal date is December 31, 2026
Pages or sheets covered by this seal: 1 of 1

List Corner to be Indexed

Corner	Section	Twp	Range
N 1/16 E	33	90N	13W



VJ Engineering
1501 Technology Parkway
Cedar Falls, Iowa - 319-266-5829

Section Corner
Reference Ties

file no.
248107
drawn by
MSE
date
1/20/25