

SC ✓  
MISC ✓  
INDEX ✓  
MARGIN ✓  
PROOF  
COMPARE

FILED  
Filed for record AUG 25, 1998 at  
4:00 P.M. and recorded in Book 331  
of MISC Page 276  
*Patricia J. Doss* Recorder  
Fee 1-5.00X  
HELLAND ENGINEERING & SURVEYING, LTD.  
1107 TECHNOLOGY PARKWAY  
CEDAR FALLS IA 50613

PAUL H. HELLAND, 1107 TECHNOLOGY PARKWAY, CEDAR FALLS, IOWA 50613, (319) 266-0161

# UNITED STATES PUBLIC LAND SURVEY CORNER CERTIFICATE OF

LAND SURVEY MONUMENTS SITUATED IN SECTION NO. 33, TOWNSHIP NO. 90, RANGE  
NO. 13, OF THE FIFTH PRINCIPAL MERIDIAN, BLACK HAWK COUNTY, IOWA.  
PREVIOUSLY RECORDED IN BOOK \_\_\_\_\_, PAGE \_\_\_\_\_.

(SHOW REASON FOR PREPARING THIS CERTIFICATE, THE EVIDENCE AND DETAILED PROCEDURES USED IN ESTABLISHING THE CORNER POSITIONS  
AND MONUMENTATION FOUND OR PLACED.)

## MONUMENT DESCRIPTION AND REMARKS:

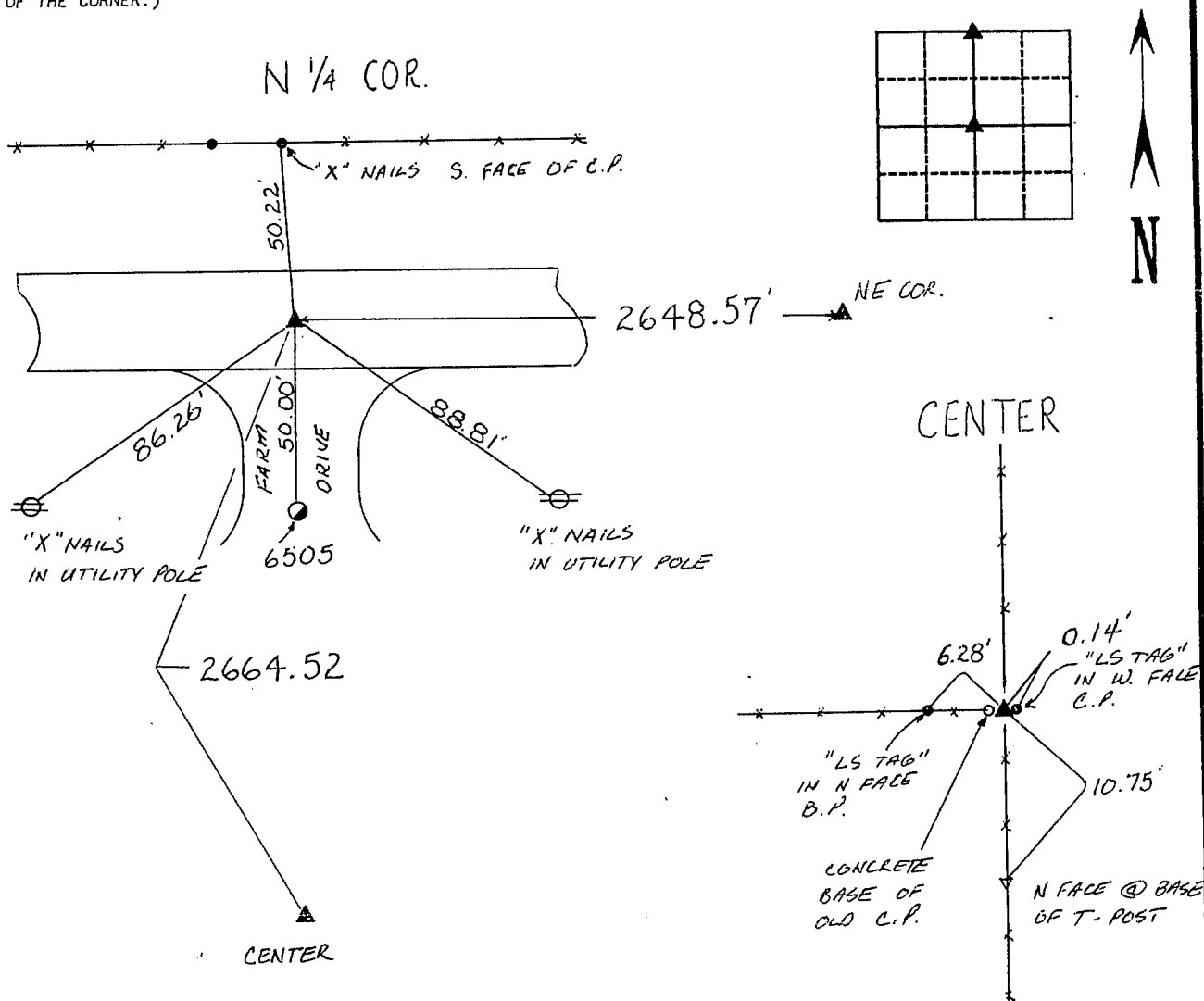
N1/4 CORNER SECTION 33 FOUND 3/8" IRON PIN IN P.C.C. (24' WIDE) PAVEMENT 0.03' SOUTH OF CENTERLINE  
JOINT.

CENTER CORNER SECTION 33 SET NO. 4 REBAR WITH CAP IN LINE WITH ALL THREE FENCES

SURVEY DONE IN NE 1/4

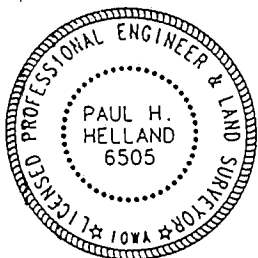
## PLAN VIEW

(SHOW A MINIMUM OF THREE REFERENCE TIES TO DURABLE PHYSICAL OBJECTS, RELEVANT MONUMENTS AND PHYSICAL CONDITIONS THAT WILL  
ENABLE RECOVERY OF THE CORNER.)



HELLAND ENGINEERING & SURVEYING, LTD.  
1107 Technology Parkway  
Cedar Falls, Iowa 50613  
(319) 266-0161

98-198



I hereby certify that this land surveying document was prepared and  
the related survey work was performed by me or under my direct  
personal supervision and that I am a duly licensed Land Surveyor  
under the laws of the State of Iowa.

*Paul H. Helland*  
Paul H. Helland  
License number 6505  
My license renewal date is December 31, 1999.  
All pages or sheets are covered by this seal except:

LIST CORNERS TO BE INDEXED			
CORNER	SECTION	TOWNSHIP	RANGE
N 1/4	33	90	13
CENTER	33	90	13

BOOK 331 PAGE 276