

2025-01678  
RECORDED: 02/05/2025 02:23:46 PM  
RECORDING FEE: \$7.00  
IOWA E-FILING FEE: \$3.13  
COMBINED FEE: \$10.13  
REVENUE TAX: \$0.00  
SANDIE L. SMITH, RECORDER  
BLACK HAWK COUNTY, IOWA

Prepared / Return To: Matthew A. Kofa, P.L.S., VJ Engineering, 1501 Technology Parkway, Suite 100, Cedar Falls, Iowa, 50613, (319) 266-5829

United States Public Land Survey Corner Certificate of

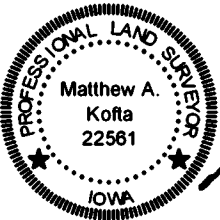
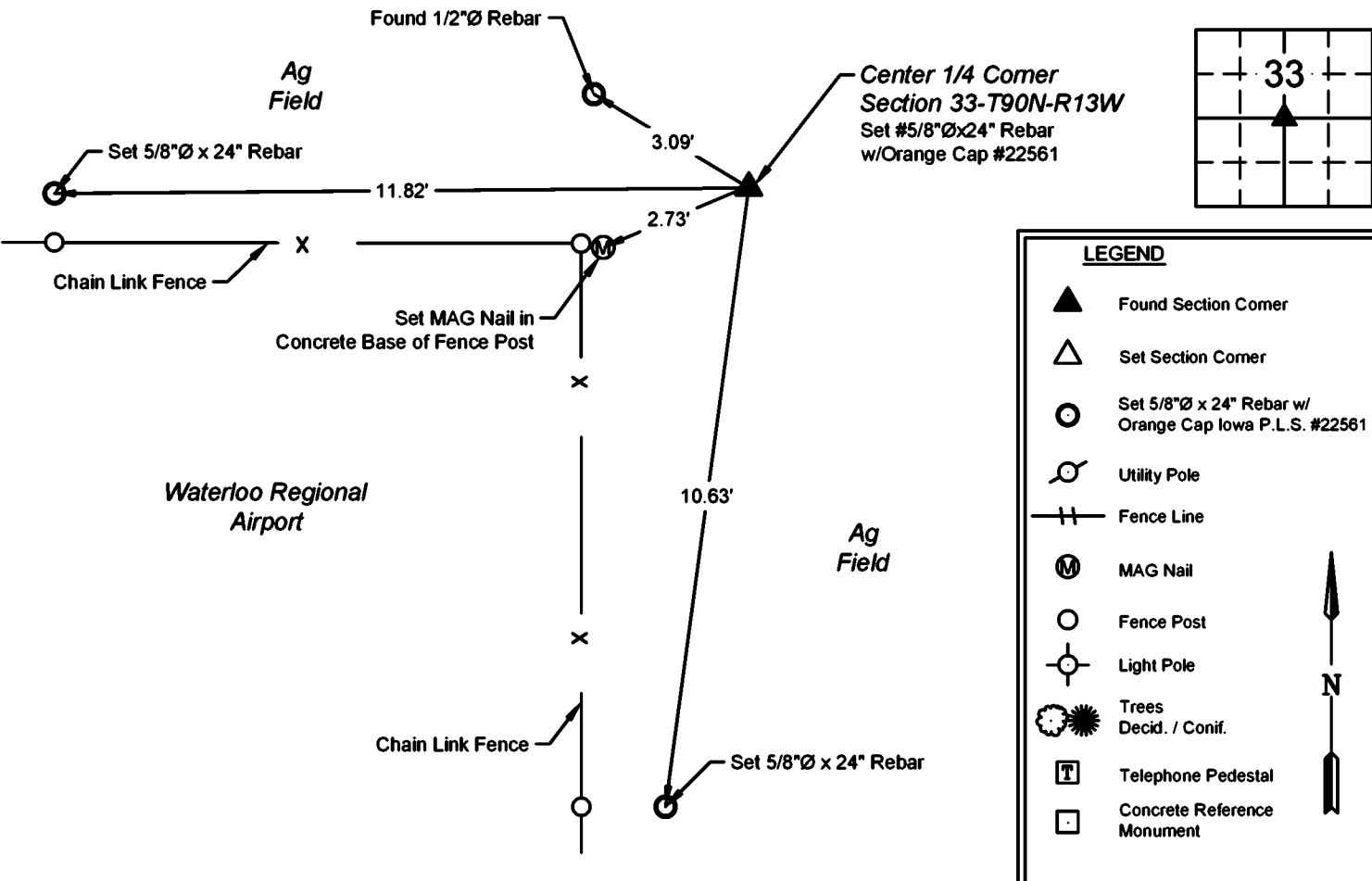
Land Survey Monuments situated in Section No. 33, Township No. 90 North, Range No. 13 West, of the Fifth Principal Meridian, Black Hawk County, Iowa Previously recorded in Document No. 331 Misc 276

Show reason for preparing this certificate, the evidence and detailed procedures used in establishing the corner positions and monumentation found or placed.

Monument Description and Remarks: Center 1/4 Corner -- Section 33-T90N-R13W  
Previous corner certificate calls out setting a 1/2"Ø Rebar w/Cap at the corner. Searched area as indicated and found a Bent, 1/2"Ø Rebar w/Orange Cap #6505, removed and replaced with 5/8"Ø x 24" Rebar w/Orange Cap #22561 and utilized as the corner.  
This corner certificate is being prepared due to a change in the monument of record and to update the reference ties.

PLAN - VIEW

(Show a minimum of three reference ties to durable physical objects, relevant monuments and physical conditions that will enable recovery of the corner.)



I hereby certify that this land surveying document was prepared and the related survey work was performed by me or under my direct personal supervision and that I am a duly licensed Land Surveyor under the laws of the State of Iowa.

Matthew A. Kofa  
Matthew A. Kofa, P.L.S.  
License Number 22561  
My license renewal date is December 31, 2026  
Pages or sheets covered by this seal: 1 of 1

List Corner to be Indexed

Corner	Section	Twp	Range
Center 1/4	33	90	13W



VJ Engineering  
1501 Technology Parkway  
Cedar Falls, Iowa - 319-266-5829

Section Corner  
Reference Ties

file no.  
248107  
drawn by  
MSE  
date  
1/20/25