

EARTH TECH 501 SYCAMORE WATERLOO, IA 50703

Michael R. Fagle, L.S.

Earth Tech, 501 Sycamore St., Suite 222, Waterloo, Iowa 50703

I-319-232-6531

UNITED STATES PUBLIC LAND SURVEY CORNER CERTIFICATE  
OF

Land Survey Monuments situated in Section 32, Township 90 North,  
Range 13 West, of the Fifth Principal Meridian, BLACK HAWK  
County, Iowa. Previously recorded in \_\_\_\_\_  
in County Recorder's Office. (Book, Page, Document Number, etc.)

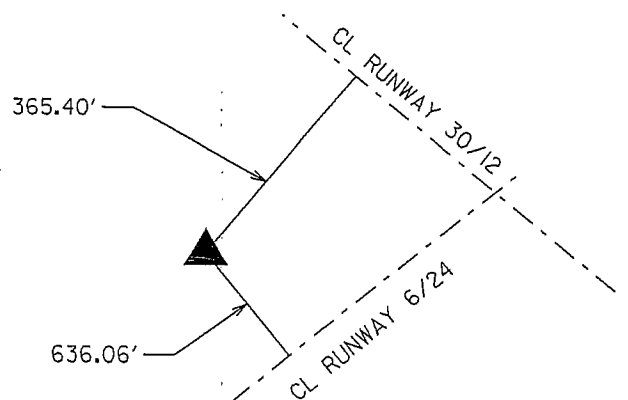
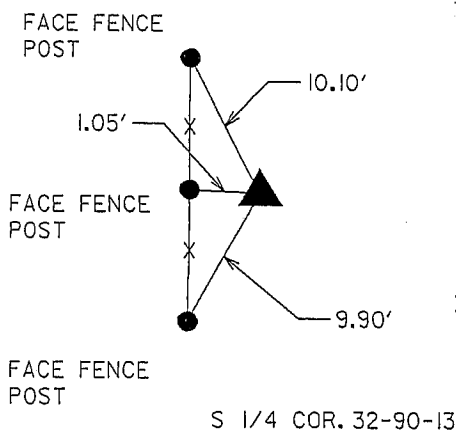
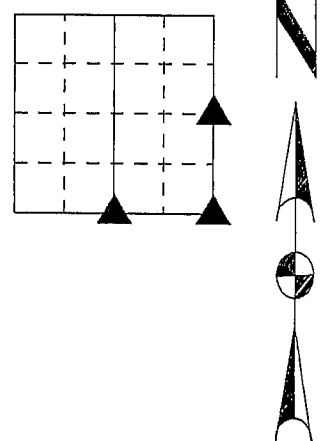
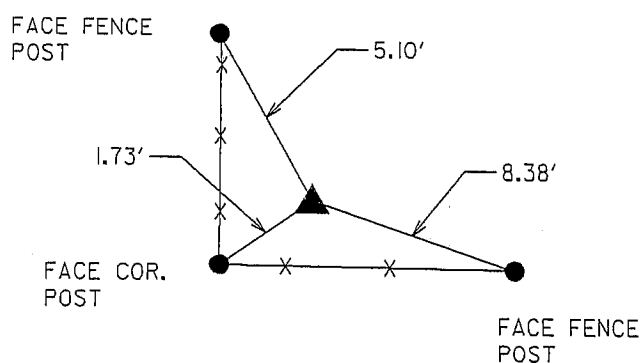
(Show reason for preparing this certificate, the evidence and detailed procedures  
used in establishing the corner positions and monumentation found or placed.)

Monument Description and Remarks:

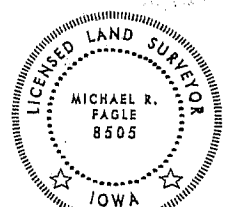
E 1/4 CORNER SECTION 32-90-13 FOUND S.C.M. 3' DEEP. SET 1 1/4" PIPE WITH 1/2" REBAR WITH YELLOW PLASTIC CAP NO. 8505.  
S 1/4 CORNER SECTION 32-90-13 SET 1 1/4" PIPE WITH 1/2" REBAR WITH YELLOW PLASTIC CAP NO. 8505. CORNER WAS SET USING  
CHAINING NOTES LOCATED IN THE BLACK HAWK COUNTY ENGINEER'S OFFICE.  
SE CORNER SECTION 32-90-13 FOUND BROKEN S.C.M. WITH REBAR NEXT TO IT.

PLAN - VIEW

(Show a minimum of three reference ties to durable physical objects, relevant  
monuments and physical conditions that will enable recovery of the corner.)



SE COR. 32-90-13



I hereby certify that this Land Surveying  
document was prepared by me or under  
my direct personal supervision and  
that I am a duly Licensed Land Surveyor  
under the laws of the State of Iowa.  
Michael R. Fagle 12-13-05  
MICHAEL R. FAGLE Date  
License number 8505  
My license renewal date is December 31, 2006  
Pages or sheets covered by this seal:  
THIS SHEET

List Corners to be Indexed

Corners	Section	Twp	Range
EAST 1/4 CORNER	32	T 90 N	R 13 W
SOUTH 1/4 CORNER	32	T 90 N	R 13 W
SOUTHEAST CORNER	32	T 90 N	R 13 W