

SC  
MISC  
INDEX  
MARGIN  
PROOF  
COMPARE

BLACK HAWK COUNTY IOWA:SS  
Filed for record FEB 21, 2002 at  
3:00 P.M. and recorded in Book 345  
of MISC Page 740  
*Patricia J. Lass* Recorder  
Fee 1-5.00X  
HELLAND ENGINEERING & SURVEYING

022828

Paul H. Helland, 1107 Technology Parkway, Cedar Falls, Iowa 50613-6951, (319)-266-0161

## UNITED STATES PUBLIC LAND SURVEY CORNER CERTIFICATE OF

LAND SURVEY MONUMENTS SITUATED IN SECTION NO. 31, TOWNSHIP NO. 90 NORTH, RANGE  
NO. 13 WEST OF THE FIFTH PRINCIPAL MERIDIAN, BLACK HAWK COUNTY, IOWA.

PREVIOUSLY RECORDED IN BOOK \_\_\_\_\_, PAGE \_\_\_\_\_.

(SHOW REASON FOR PREPARING THIS CERTIFICATE, THE EVIDENCE AND DETAILED PROCEDURES USED IN ESTABLISHING THE  
CORNER POSITIONS AND MONUMENTATION FOUND OR PLACED.)

### MONUMENT DESCRIPTION AND REMARKS:

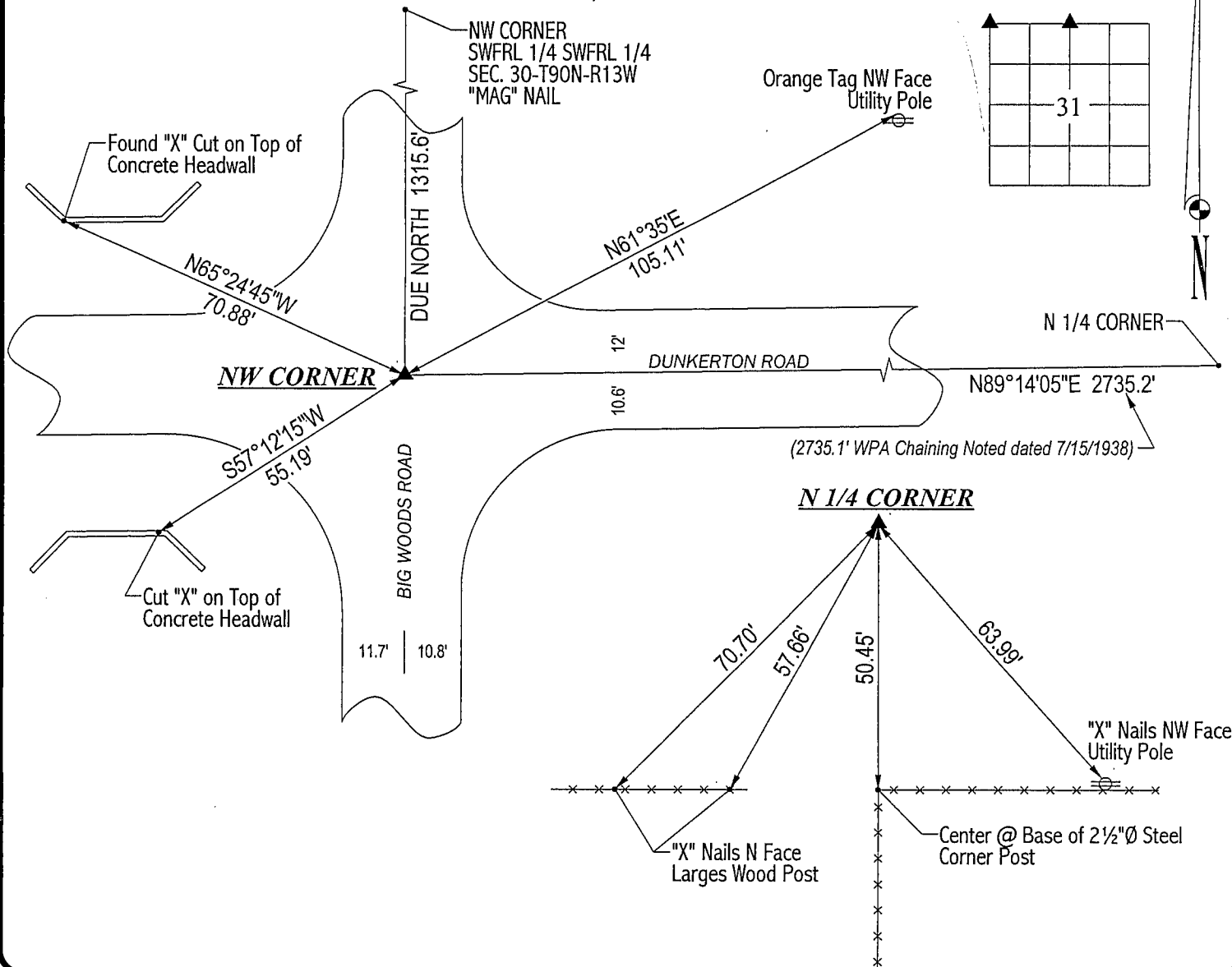
SURVEY DONE IN SW FRL 1/4 SWFRL 1/4 SEC. 30-T90N-R13W.

NW CORNER: All county engineer reference ties are lost. Found "RR" spike in A.C.C. pavement. Corner location fits  
WPA chaining notes dated 7/15/1938 to the North and to the East.

N 1/4 CORNER: No certificate filed with I.D.O.T. Acquisition Plats recorded in 562 LD 515 & 519, 569 LD 439. All county  
engineer reference ties are lost. Found No. 5 rebar w/aluminum I.D.O.T cap 0.6' deep.

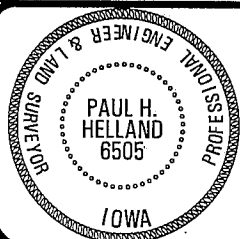
### PLAN VIEW

(SHOW A MINIMUM OF THREE REFERENCE TIES TO DURABLE PHYSICAL OBJECTS, RELEVANT MONUMENTS AND PHYSICAL  
CONDITIONS THAT WILL ENABLE RECOVERY OF THE CORNER.)



HELLAND ENGINEERING & SURVEYING, LTD.  
1107 Technology Parkway  
Cedar Falls, Iowa 50613-6951  
(319)-266-0161

FILE NAME: 02-116C1.DRG



I hereby certify that this land surveying document was prepared  
and the related survey work was performed by me or under my  
direct personal supervision and that I am a duly licensed Land  
Surveyor under the laws of the State of Iowa.

*Paul H. Helland* 2/14/02  
Paul H. Helland  
License Number 6505  
My license renewal date is December 31, 2003.  
All pages or sheets are covered by this seal except:

LIST CORNERS TO BE INDEXED			
CORNER	SECTION	TOWNSHIP	RANGE
NW CORNER	31	90N	13W
N 1/4 CORNER	31	90N	13W

Rec  
BOOK 0345 740