

Index Legend	
County:	Black Hawk
Section(s):	31 Township: 90 N Range: 13 W
Corner(s):	East 1/4 Corner
Requestor:	City of Waterloo
Proprietor:	City of Waterloo
Surveyor:	William W. Castle
Surveyor Company:	City of Waterloo Engineering Department 715 Mulberry Street, Waterloo, IA 50703
Return To:	715 Mulberry St, Waterloo, IA 50703 291-4312


Doc ID: 011869020001 Type: GEN
Recorded: 11/21/2022 at 03:08:21 PM
Fee Amt: \$7.00 Page 1 of 1
Black Hawk County Iowa
SANDIE L. SMITH RECORDER
File **2023-00008113**

United States Public Land Survey Corner Certificate

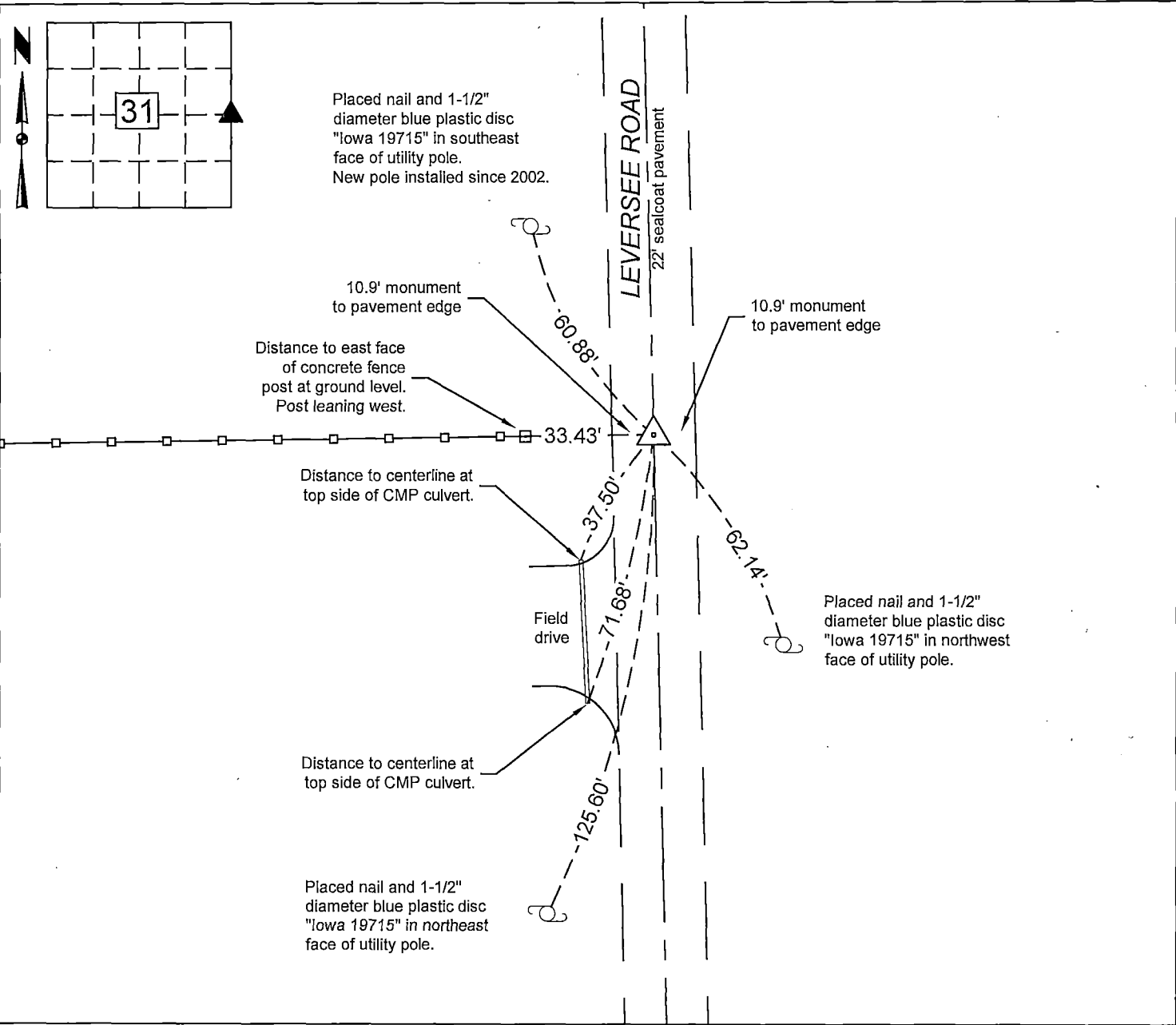
Land Survey Monument situated in Section 31, Township 90 North, Range 13 West, of the Fifth Principal Meridian, Black Hawk County, Iowa.
Previously recorded in Misc. Book 345 Page 563 in the Black Hawk County Recorder's Office.

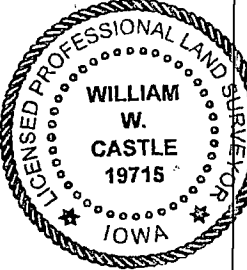

Reason for preparing this certificate, the evidence and detailed procedures used in establishing the corner position, and monumentation found or placed.
Ties shown on current section corner tie have been removed and monument covered by 5-inches of sealcoat pavement.

Using remaining ties, found metallic reading under pavement. Cut 2-foot by 2-foot by 5-inch thick square in pavement. In underlying gravel, found landscaping spike in concrete slug. Previous tie reported landscaping spike set above concrete monument. Set new tie references measured from spike. Replaced sealcoat pavement then placed 3-inch survey nail in sealcoat flush with surface.

PLAN VIEW

Show a minimum of three reference ties to durable physical objects, relevant monuments and physical conditions that will enable recovery of the corner.



	I hereby certify that this surveying document was prepared and the related survey work was performed by me or under my direct personal supervision and that I am a duly licensed Land Surveyor under the laws of the State of Iowa.  William W. Castle, PLS License Number 19715 My License Renewal Date is December 31, 2023. Pages or sheets covered by this seal : 1/1	List corners to be indexed			
			Corners	Section	Twp
		E 1/4	31	90	13

City of Waterloo Engineering Department 715 Mulberry Street, Waterloo, Iowa 50703 Phone: (319) 291-4312 Fax: (319) 291-4262	Drawn By: WWC Scale: 1" = 40' Field Work Date: 7-1-2022 Date Drawn: 11-18-2022	Sheet No. 1 of 1
---	--	----------------------------