

SC
MISC
INDEX
MARGIN
PROOF
COMPARE

BLACK HAWK COUNTY IOWA:SS
Filed for record FEB 5, 2002 at
11:30A.M. and recorded in Book 345
of MISC Page 563

021258

Patricia A. Loo

RECORDER

FEE 1-5.00X
EARTH TECH
501 SYCAMORE ST., STE 222
WATERLOO IA 50703

Michael R. Fagle, L.S.

Earth Tech, 501 Sycamore St., Suite 222, Waterloo, Iowa 50703

I-319-232-6531

UNITED STATES PUBLIC LAND SURVEY CORNER CERTIFICATE OF

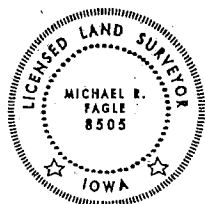
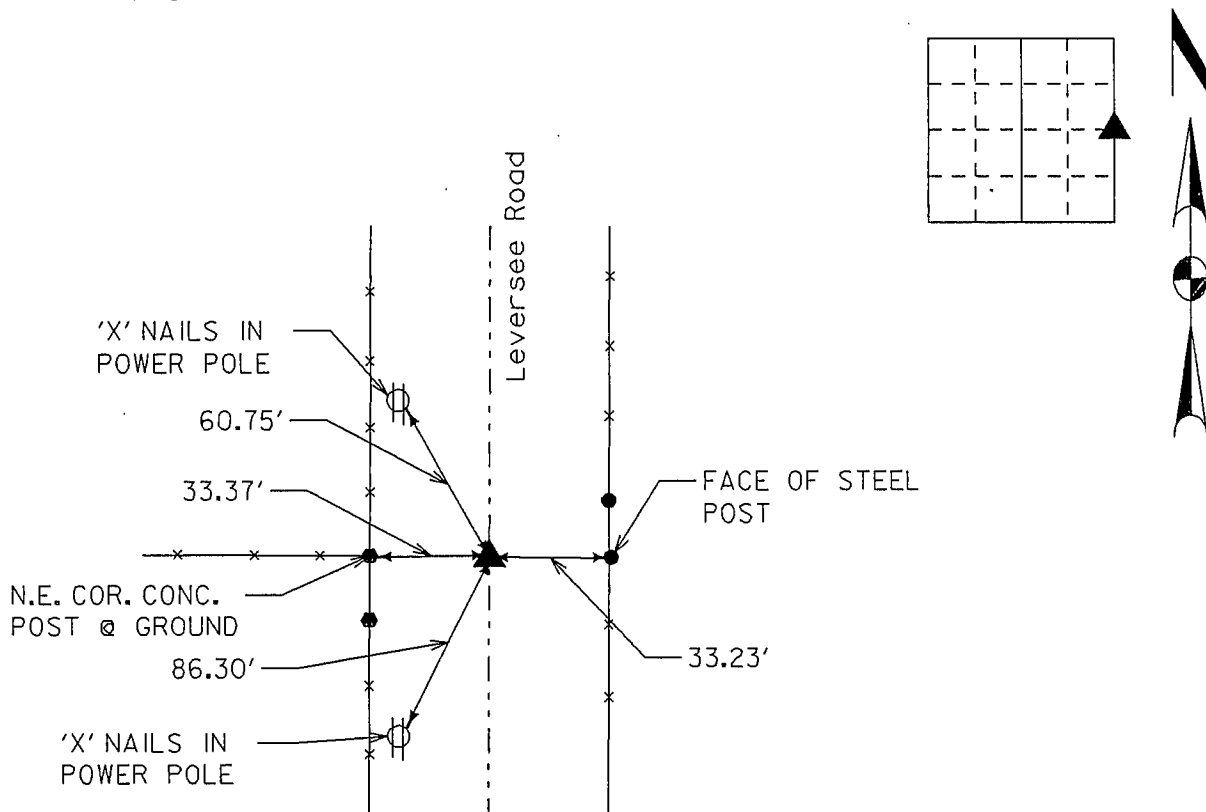
Land Survey Monuments situated in Section 31, Township 90 North,
Range 13 West, of the Fifth Principal Meridian, BLACK HAWK
County, Iowa. Previously recorded in _____
in County Recorder's Office. (Book, Page, Document Number, etc.)

(Show reason for preparing this certificate, the evidence and detailed procedures
used in establishing the corner positions and monumentation found or placed.)

Monument Description and Remarks: FOUND CONCRETE MONUMENT WITH BRASS CAP
15" DEEP, SET 12" X 3/8" LANDSCAPE SPIKE OVER MONUMENT

PLAN - VIEW

(Show a minimum of three reference ties to durable physical objects, relevant
monuments and physical conditions that will enable recovery of the corner.)



I hereby certify that this Land Surveying
document was prepared by me or under
my direct personal supervision and
that I am a duly Licensed Land Surveyor
under the laws of the State of Iowa.

Michael R Fagle 2-04-02
MICHAEL R. FAGLE Date

License number 8505

My license renewal date is December 31, 2002

Pages or sheets covered by this seal:

THIS SHEET

List Corners to be Indexed

Corners	Section	Twp	Range
East Quarter Corner	31	T 90 N	R 13 W

BOOK 0345 563
MISC