

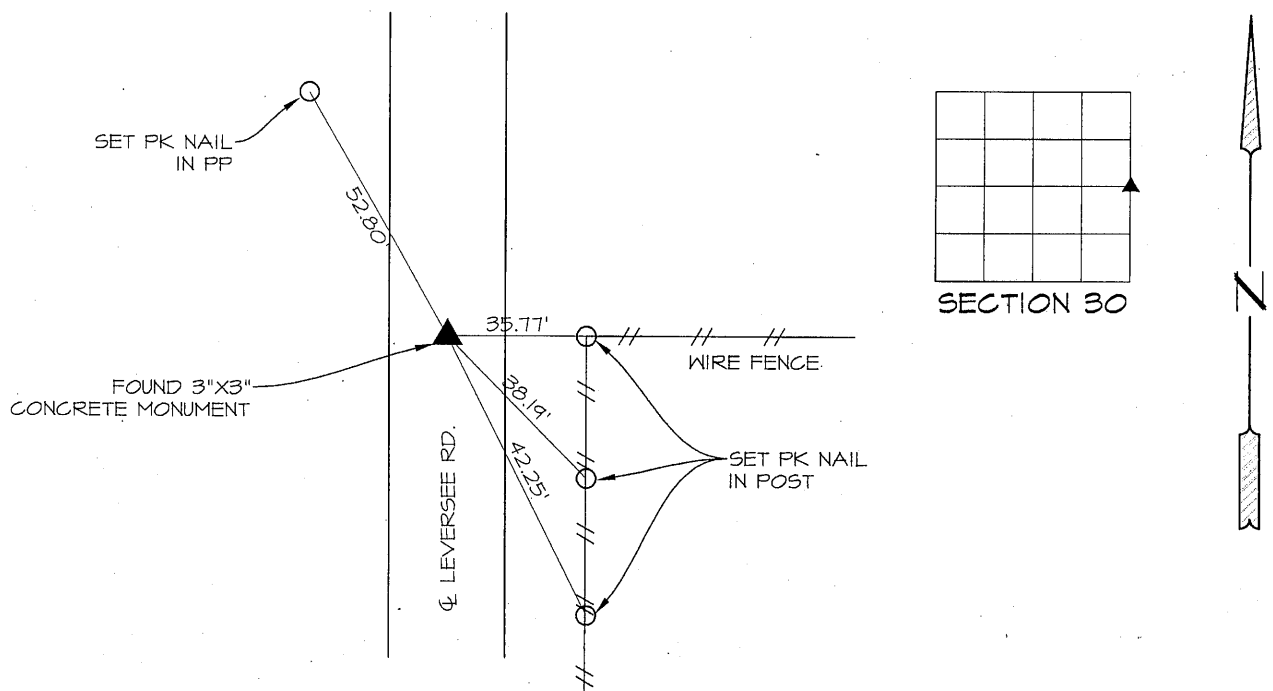
PREPARED BY PATRICK SHEPARD: CIVIL ENGINEERING CONSULTANTS, INC. - 2400 86th ST. #12 -DES MOINES, IOWA 50322

# UNITED STATES PUBLIC LAND SURVEY CORNER CERTIFICATE OF

LAND SURVEY MONUMENTS SITUATED IN SECTION 30, TOWNSHIP 90 NORTH, RANGE 13 WEST, OF THE FIFTH PRINCIPAL MERIDIAN, BLACK HAWK COUNTY, IOWA. NO PREVIOUS RECORD FOUND AT THE BLACK HAWK COUNTY RECORDER'S OFFICE.

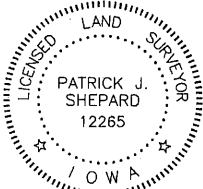
MONUMENT DESCRIPTION AND REMARKS: E  $\frac{1}{4}$  CORNER, 30-90-13 FOUND 3"X3" CONCRETE MONUMENT IN THE CENTERLINE OF ROAD AND IN LINE WITH THE FENCE TO THE EAST. THIS CERTIFICATE IS BEING PREPARED TO DOCUMENT MONUMENTATION FOUND AND ACCEPTED AS THE E  $\frac{1}{4}$  CORNER AND TO PROVIDE TIES.

## PLAN -VIEW



### LIST CORNERS TO BE INDEXED

CORNERS	SECTION	TWP.	RANGE
E $\frac{1}{4}$ CORNER	30	90	13
W $\frac{1}{4}$ CORNER	29	90	13

	<p>I HEREBY CERTIFY THAT THIS LAND SURVEYING DOCUMENT WAS PREPARED AND THE RELATED SURVEY WORK WAS PERFORMED BY ME OR UNDER MY DIRECT PERSONAL SUPERVISION AND THAT I AM A DULY LICENSED LAND SURVEYOR UNDER THE LAWS OF THE STATE OF IOWA.</p> <p><i>Patrick J. Shepard</i> 1-24-13</p> <p>PATRICK J. SHEPARD, IOWA LICENSE NO. 12265 DATE MY LICENSE RENEWAL DATE IS DECEMBER 31, 2013</p> <p>PAGES OR SHEETS COVERED BY THIS SEAL:</p> <p>THIS SHEET ONLY</p>
---	--