

IRS  
P  
Z

Document Number: 2007001467  
Date: Jul 19, 2006 2:33:40 pm  
Aud Fee: 0.00 Rec Fee: 0.00  
Trans Tax: 0.00 Rec Management Fee: 0.00  
E-Com Fee: 0.00 Non-Standard Page Fee: 0.00  
Filed for record in Black Hawk County, Iowa  
Patricia S. Saßs, County Recorder

PREPARED BY: BLACK HAWK COUNTY ENGINEERS OFFICE  
316 E. FIFTH STREET, ROOM 211 WATERLOO, IOWA 50703  
PH.# (319) 833-3008  
FAX.# (319) 833-3139  
SLSI 9-94  
CERT 12-96

UNITED STATES PUBLIC LAND SURVEY CORNER CERTIFICATE OF  
Land Survey Monuments situated in Section 29, Township 90 N,  
Range 13 W, of the Fifth Principal Meridian, BLACK HAWK County, Iowa.  
Previously recorded in Misc. Book N/A, Page N/A, in County Recorder's Office.

(Show reason for preparing this certificate, the evidence and detailed procedures used in establishing the corner positions and monumentation found or placed.)

Monument Description and Remarks: FND 20d NAIL LOCATED 2" DEEP WITH  
PINK RIBBON AT ± CENTERLINE INTERSECTION, AS DENOTED. ACCEPTED AS FOUND,  
AND TIED FOR PUBLIC RECORD, WITH NO FURTHER EXCAVATION CONDUCTED.  
CORNER UTILIZED FOR SECTION LINE REFERENCE TO EAST, ON BR. REPLACEMENT  
PROJECT NEAR N. 1/4 COR. SECT. 28-90-13.

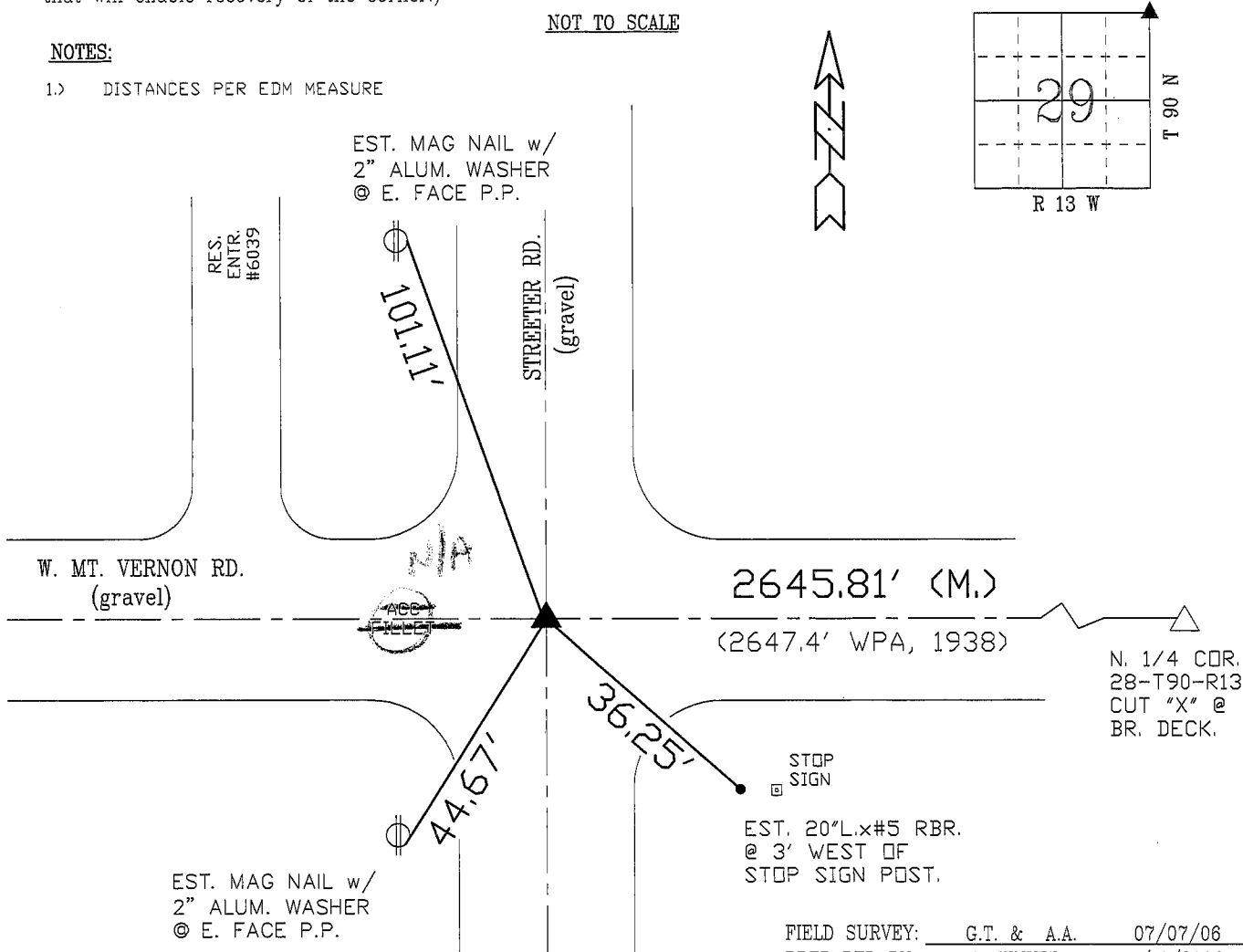
PLAN - VIEW

(Show a minimum of three reference ties to durable physical objects, relevant monuments and physical conditions that will enable recovery of the corner.)

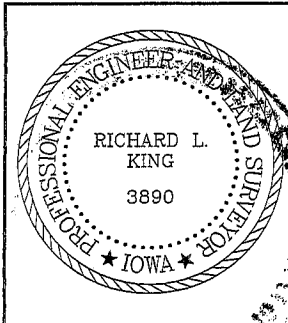
NOT TO SCALE

NOTES:

1.) DISTANCES PER EDM MEASURE



CERTIFICATION



I hereby certify that this land surveying document was prepared and the related survey work was performed by me or under my direct personal supervision and that I am a duly licensed Land Surveyor under the laws of the State of Iowa.  
Richard L. King 7/14/06 (date)  
License Number 3890  
My license renewal date is December 31, 2007  
Pages or sheets covered by this seal:  
This Land Corner Certificate Only.

LIST CORNERS TO BE INDEXED

Corner	Section	Township	Range
N.E. COR.	29	90 N	13 W
N.W. COR.	28	90 N	13 W
S.E. COR.	20	90 N	13 W
S.W. COR.	21	90 N	13 W