

Reserved for County Recorder's use.



Doc ID: 011816310001 Type: GEN
Recorded: 08/19/2022 at 08:45:46 AM
Fee Amt: \$7.00 Page 1 of 1
Black Hawk County Iowa
SANDIE L. SMITH RECORDER

File 2023-00002971

Kyle J. Helland, 6109 Chancellor Drive, Cedar Falls, Iowa 50613-6916, (319)-266-0161

UNITED STATES PUBLIC LAND SURVEY CORNER CERTIFICATE
OF

LAND SURVEY MONUMENTS SITUATED IN SECTION NO. 29, TOWNSHIP NO. 90 NORTH, RANGE
NO. 13 WEST OF THE FIFTH PRINCIPAL MERIDIAN, BLACK HAWK COUNTY, IOWA.
PREVIOUSLY RECORDED IN N/A

(SHOW REASON FOR PREPARING THIS CERTIFICATE, THE EVIDENCE AND DETAILED PROCEDURES USED IN ESTABLISHING THE
CORNER POSITIONS AND MONUMENTATION FOUND OR PLACED.)

MONUMENT DESCRIPTION AND REMARKS:
NO USPLSCC ON FILE. SURVEY COMPLETED IN THE NE 1/4 OF SEC. 29-T90N-R13W.

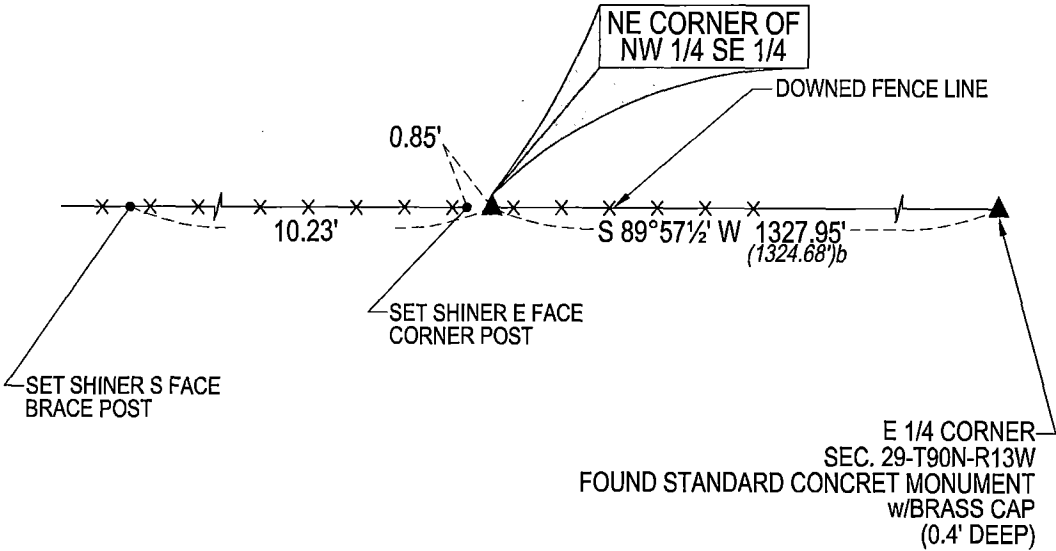
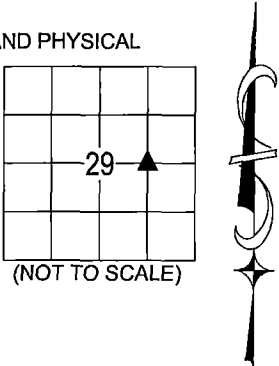
NE CORNER NW 1/4 SW 1/4: NO BLACK HAWK COUNTY ENGINEER TIES ARE AVAILABLE. PER PLAT OF SURVEY
RECORDED IN BOOK 252 PAGE 915 DATED 10/03/1983 CALLS FOR [COR. POST]. SEARCHED AREA WITH MAGNETIC
DETECTOR AND PROBED AROUND CORNER POST, EXCAVATED EAST SIDE CORNER POST, FOUND YELLOW GRANITE
STONE 8"±Ø 1.2± DEEP, SET NO. 4 REBAR WITH LICENSE #23212 ABOVE HIGH POINT AND UTILIZED SAID REBAR AS
CORNER.

PLAN VIEW

(SHOW A MINIMUM OF THREE REFERENCE TIES TO DURABLE PHYSICAL OBJECTS, RELEVANT MONUMENTS AND PHYSICAL
CONDITIONS THAT WILL ENABLE RECOVERY OF THE CORNER.)

LEGEND

(0.0')b PER PLAT OF SURVEY BK 252 PG 915
DATED 10/03/1983



(BEARINGS ARE ASSUMED)



HELLAND ENGINEERING & SURVEYING, LTD.
6109 Chancellor Drive
Cedar Falls, Iowa 50613-6916
(319)-266-0161

BRASS TAG = 4d. NAIL & 13/16"Ø BRASS TAG DRAWN BY: CDR
SHINER = 1"Ø STEEL SHINER w/MASONRY NAIL
OPC = PLASTIC CAP (O=ORANGE, R=RED, Y=YELLOW)
(00') RECORDED AS FILE NAME: 22-156-33.DWG



I hereby certify that this land surveying document was prepared
and the related survey work was performed by me or under my
direct personal supervision and that I am a duly licensed
Professional Land Surveyor under the laws of the State of Iowa.
Kyle J. Helland 12/19/2022
Kyle J. Helland
License Number 23212
My license renewal date is December 31, 2023.
All pages or sheets are covered by this seal except:

LIST CORNERS TO BE INDEXED			
CORNER	SECTION	TOWNSHIP	RANGE
NE COR. NW 1/4 SE 1/4	29	90N	13W
SE COR. SW 1/4 NE 1/4	29	90N	13W
SW COR. SE 1/4 NE 1/4	29	90N	13W
NW COR. NE 1/4 SE 1/4	29	90N	13W