

SC ✓
MISC
INDEX
MARGIN
PROOF
COMPARE

Patricia J. Bass Recorder
Fee 1-5.00X
HELLAND ENGINEERING & SURVEYING, LTD.
1107 TECHNOLOGY PARKWAY
CEDAR FALLS IA 50613

PAUL H. HELLAND, 1107 TECHNOLOGY PARKWAY, CEDAR FALLS, IOWA 50613, (319) 266-0161

UNITED STATES PUBLIC LAND SURVEY CORNER CERTIFICATE OF

LAND SURVEY MONUMENTS SITUATED IN SECTION NO. 28, TOWNSHIP NO. T90N, RANGE NO. R13W, OF THE FIFTH PRINCIPAL MERIDIAN, BLACK HAWK COUNTY, IOWA.
PREVIOUSLY RECORDED IN BOOK, PAGE

(SHOW REASON FOR PREPARING THIS CERTIFICATE, THE EVIDENCE AND DETAILED PROCEDURES USED IN ESTABLISHING THE CORNER POSITIONS AND MONUMENTATION FOUND OR PLACED.)

MONUMENT DESCRIPTION AND REMARKS:

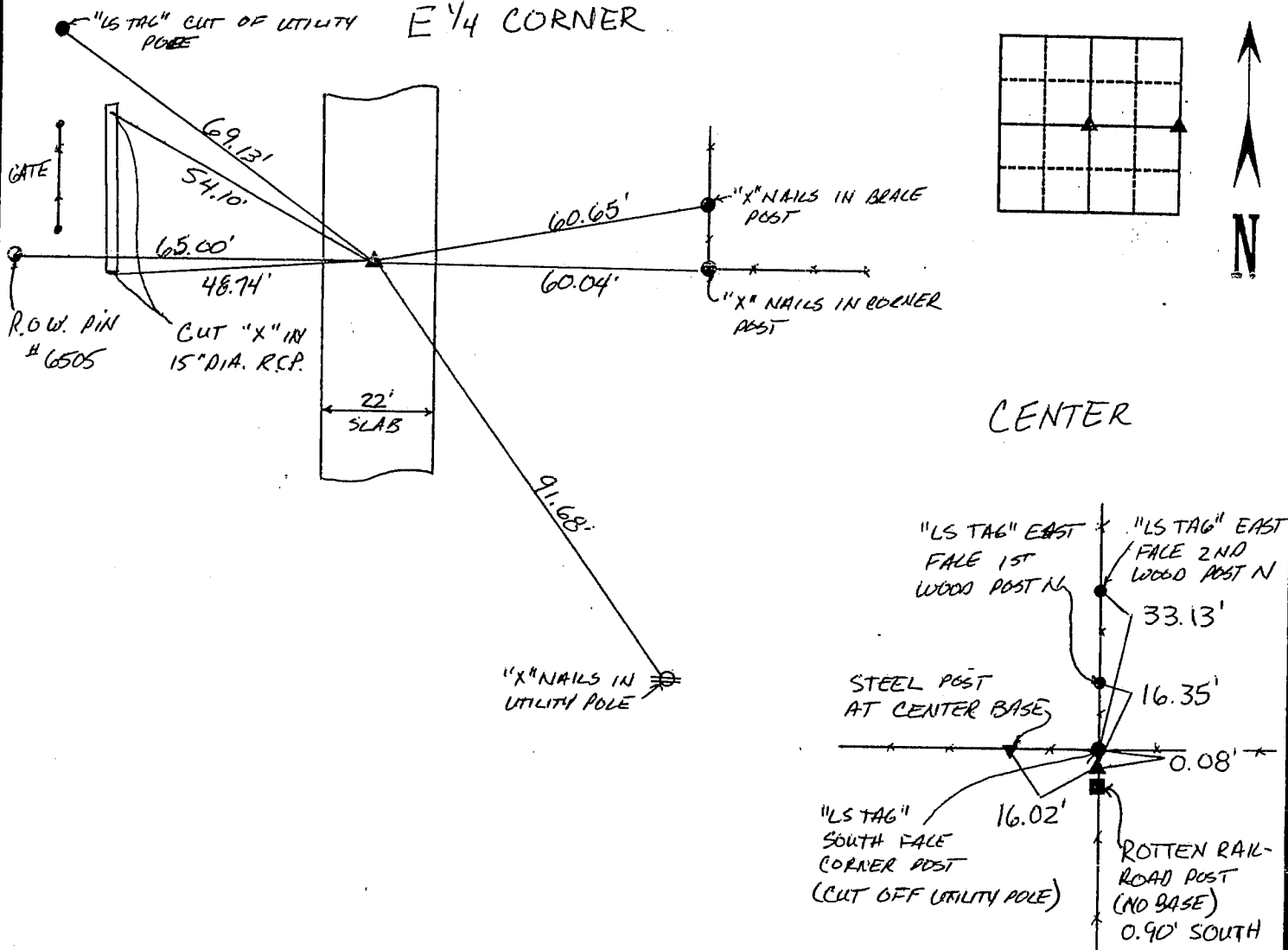
E 1/4 CORNER FOUND LEAD PLUG WITH PHILLIPS SCREWDRIVER PUNCHED "X" IN CENTERLINE JOINT IN P.C.C.

CENTER DUG 2' HOLE AND PROBED IN ALL DIRECTIONS FOUND NOTHING SET 1/2" PIN WITH CAP SOUTH EDGE OF CORNER POST (CUT OFF UTILITY POLE). PIN LINES WITH ALL FENCES (EAST FENCE VERY POOR CONDITION)

SURVEY DONE IN N 1/2 SE 1/4

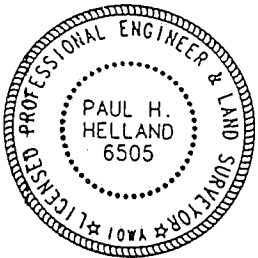
PLAN VIEW

(SHOW A MINIMUM OF THREE REFERENCE TIES TO DURABLE PHYSICAL OBJECTS, RELEVANT MONUMENTS AND PHYSICAL CONDITIONS THAT WILL ENABLE RECOVERY OF THE CORNER.)



HELLAND ENGINEERING & SURVEYING, LTD.
1107 Technology Parkway
Cedar Falls, Iowa 50613
(319) 266-0161

98-218



I hereby certify that this land surveying document was prepared and the related survey work was performed by me or under my direct personal supervision and that I am a duly licensed Land Surveyor under the laws of the State of Iowa.

Paul H. Helland
License number 6505
My license renewal date is December 31, 1999.
All pages or sheets are covered by this seal except:

LIST CORNERS TO BE INDEXED			
CORNER	SECTION	TOWNSHIP	RANGE
E 1/4	28	T90N	R13W
CENTER	28	T90N	R13W

BOOK 331 PAGE 275