

IA
P
Z

Document Number: 2008009987
Date: Nov 08, 2007 4:30:00 pm
Aud Fee: 0.00 Rec Fee: 0.00
Trans Tax: 0.00 Rec Management Fee: 0.00
E-Com Fee: 0.00 Non-Standard Page Fee: 0.00
Filed for record in Black Hawk County, Iowa
Judith A. McCarthy, County Recorder

PREPARED BY: BLACK HAWK COUNTY ENGINEERS OFFICE
316 E. FIFTH STREET, ROOM 211 WATERLOO, IOWA 50703
PH.# (319) 833-3008 SLSI 9-94
FAX.# (319) 833-3139 CERT 12-96

UNITED STATES PUBLIC LAND SURVEY CORNER CERTIFICATE OF
Land Survey Monuments situated in Section 27, Township 90 N,
Range 13 W, of the Fifth Principal Meridian, BLACK HAWK County, Iowa.
Previously recorded in Misc. Book N/A, Page N/A, in County Recorder's Office.

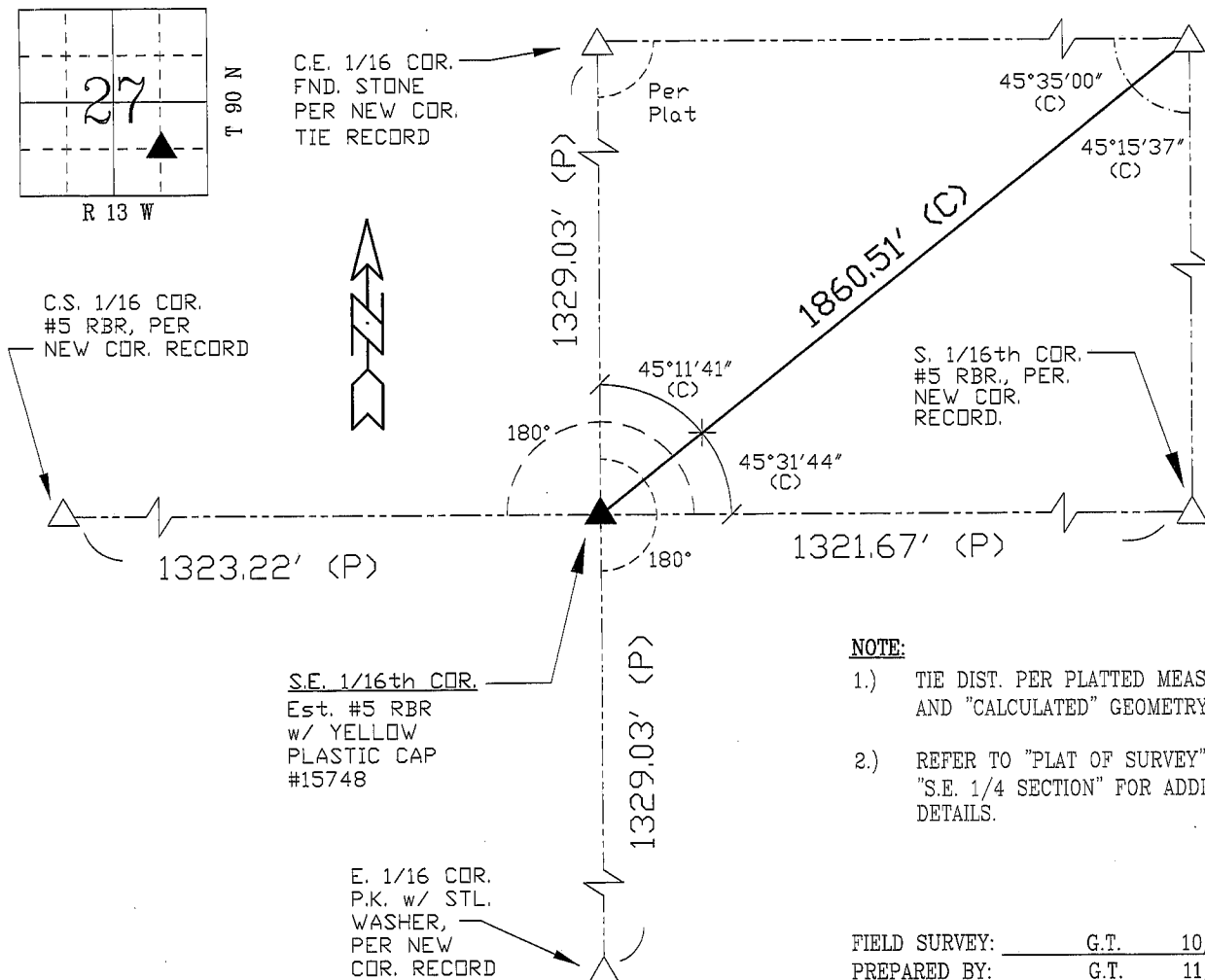
(Show reason for preparing this certificate, the evidence and detailed procedures used in establishing the corner positions and monumentation found or placed.)

Monument Description and Remarks: SET CENTER OF S.E. 1/4 BY STD.
1/4-1/4 DIVISION. CORNER LOC. IN FIELD, BEING SET #5 RBR. w/ YELLOW
PLASTIC CAP MARKED @ 2" DEEP w/ "T" POST ON W. SIDE.
NO LOCAL PHYSICAL OBJECTS TO TIE, SO GEOMETRIC LAND CORNER TIES USED.

PLAN - VIEW

(Show a minimum of three reference ties to durable physical objects, relevant monuments and physical conditions that will enable recovery of the corner.)

NOT TO SCALE

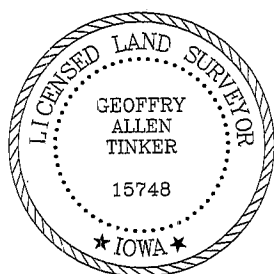


NOTE:

- 1.) TIE DIST. PER PLATTED MEASURE AND "CALCULATED" GEOMETRY.
- 2.) REFER TO "PLAT OF SURVEY" FOR "S.E. 1/4 SECTION" FOR ADDITIONAL DETAILS.

FIELD SURVEY: G.T. 10/22/07
PREPARED BY: G.T. 11/07/07

CERTIFICATION



I hereby certify that this land surveying document was prepared and the related survey work was performed by me or under my direct personal supervision and that I am a duly licensed Land Surveyor under the laws of the State of Iowa.

Geoffrey Allen Tinker 11/08/07
(date)

License Number 15748

My license renewal date is December 31, 2008

Pages or sheets covered by this seal:

This Land Corner Certificate Only.

LIST CORNERS TO BE INDEXED

Corner Section - Township - Range
S.E. 1/16th 27 90 N 13 W