

Reserved for County Recorder's use.



Doc ID: 011947660001 Type: GEN
Recorded: 05/24/2023 at 02:23:30 PM
Fee Amt: \$7.00 Page 1 of 1
Black Hawk County Iowa
SANDIE L. SMITH RECORDER

File 2023-00015740

Jeffrey P. Helland, 6109 Chancellor Drive, Cedar Falls, Iowa 50613-6916, (319)-266-0161

UNITED STATES PUBLIC LAND SURVEY CORNER CERTIFICATE
OF

LAND SURVEY MONUMENTS SITUATED IN SECTION NO. 27, TOWNSHIP NO. 90 NORTH, RANGE
NO. 13 WEST OF THE FIFTH PRINCIPAL MERIDIAN, BLACK HAWK COUNTY, IOWA.
PREVIOUSLY RECORDED IN #2008009163

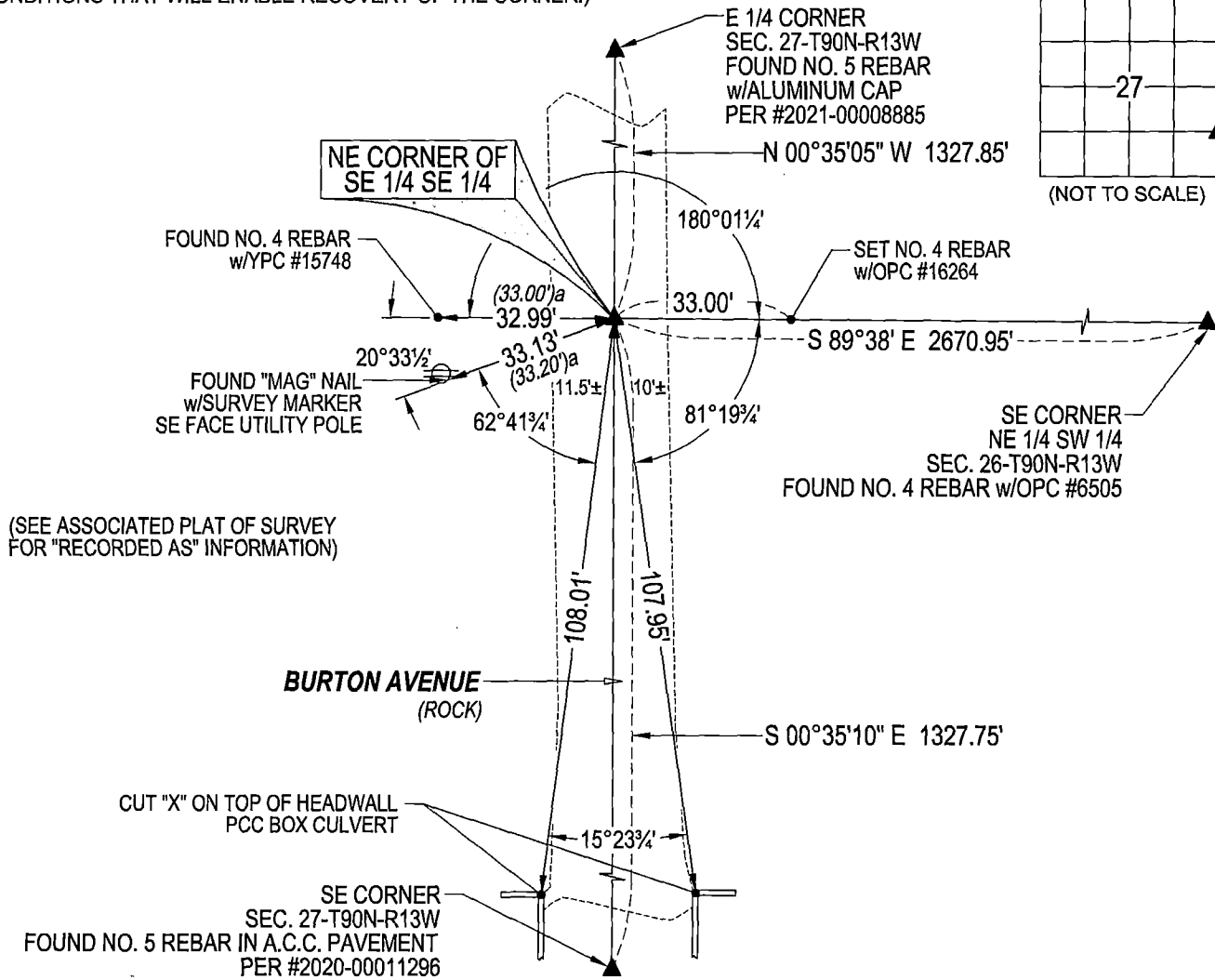
(SHOW REASON FOR PREPARING THIS CERTIFICATE, THE EVIDENCE AND DETAILED PROCEDURES USED IN ESTABLISHING THE
CORNER POSITIONS AND MONUMENTATION FOUND OR PLACED.)

MONUMENT DESCRIPTION AND REMARKS:
ONLY TWO REFERENCE TIES REMAIN. SURVEY COMPLETED IN THE SW 1/4 OF SEC. 26-T90N-R13W.

→ NE CORNER OF SE 1/4 SE 1/4: NO BLACK HAWK COUNTY ENGINEER TIES AVAILABLE. USPLSCC #2008009163 DATED
10/29/2007 CALLS FOR [SET #5 REBAR x ±32" L. w/ YELLOW PLASTIC CAP #15748 AT MID POINT EAST LINE OF S.E. 1/4, &
LOCATED ± C.L. GRAVEL ROAD @ 2" DEEP. CORNER EST. FOR SURVEY OF S.E. 1/4 SAID SECT.] SEARCHED AREA WITH
MAGNETIC DETECTOR, EXCAVATED, AND FOUND NO. 5 REBAR w/ILLEGIBLE YPC 0.4± DEEP.

PLAN VIEW

(SHOW A MINIMUM OF THREE REFERENCE TIES TO DURABLE PHYSICAL OBJECTS, RELEVANT MONUMENTS AND PHYSICAL
CONDITIONS THAT WILL ENABLE RECOVERY OF THE CORNER.)



(SEE ASSOCIATED PLAT OF SURVEY
FOR "RECORDED AS" INFORMATION)

(BEARINGS ARE ASSUMED)



HELLAND ENGINEERING & SURVEYING, LTD.
6109 Chancellor Drive
Cedar Falls, Iowa 50613-6916
(319)-266-0161

SHINER = 4d. NAIL & 1 5/16"Ø METAL SHINER DRAWN BY: KDA
BRASS TAG = 4d. NAIL & 13/16"Ø BRASS TAG
OPC = PLASTIC CAP (O=ORANGE, R=RED, Y=YELLOW)
(00") RECORDED AS FILE NAME: 23-131-54.DWG



I hereby certify that this land surveying document was prepared
and the related survey work was performed by me or under my
direct personal supervision and that I am a duly licensed
Professional Land Surveyor under the laws of the State of Iowa.
Jeffrey P. Helland
License Number 16264
My license renewal date is December 31, 2023.
All pages or sheets are covered by this seal except:

LIST CORNERS TO BE INDEXED			
CORNER	SECTION	TOWNSHIP	RANGE
NE COR. SE 1/4 SE 1/4	27	90N	13W
SE COR. NE 1/4 SE 1/4	27	90N	13W
SW COR. NW 1/4 SW 1/4	26	90N	13W
NW COR. SW 1/4 SW 1/4	26	90N	13W