

I
P
Z

Document Number: 2008009165

Date: Oct 29, 2007 4:30:00 pm

Aud Fee: 0.00 Rec Fee: 0.00

Trans Tax: 0.00 Rec Management Fee: 0.00

E-Com Fee: 0.00 Non-Standard Page Fee: 0.00

Filed for record in Black Hawk County, Iowa
Judith A. McCarthy, County RecorderPREPARED BY: BLACK HAWK COUNTY ENGINEERS OFFICE
316 E. FIFTH STREET, ROOM 211 WATERLOO, IOWA 50703PH.# (319) 833-3008
FAX.# (319) 833-3139SLSI 9-94
CERT 12-96

UNITED STATES PUBLIC LAND SURVEY CORNER CERTIFICATE OF
Land Survey Monuments situated in Section 27, Township 90 N,
Range 13 W, of the Fifth Principal Meridian, BLACK HAWK County, Iowa.
Previously recorded in FEE Book n/a, Page n/a, in County Recorder's Office.

(Show reason for preparing this certificate, the evidence and detailed procedures used in establishing the corner positions and monumentation found or placed.)

Monument Description and Remarks: EAST 1/16th CORNER, SOUTH:
SET 2" P.K. NAIL w/ STL. WASHER ± C.L. ACC PVM'T., AT MID POINT (SPLIT)
OF S. LINE S.E. 1/4 PER COUNTY SURVEY RECORD SET BY "BARBER", 1909.
NO CORNER REF. PER 1938 WPA CHAINING, NOR COUNTY RD. PLAN REFERENCE.
B.H. CO. PLANS "C-345(65)" dtd. 1965 CALL 2646' w/ FENCE ONLY @ ±SPLIT.
WPA REF. FOR S. LINE OF S.E. 1/4 2649.5, vs. "BARBER" 1909 OF 2647.8'
RECORD W.P.A. (IGS) CHAIN NOTED 1/4-1/4 FNC. @ 1310.9 W. OF S.E. COR. SECT.

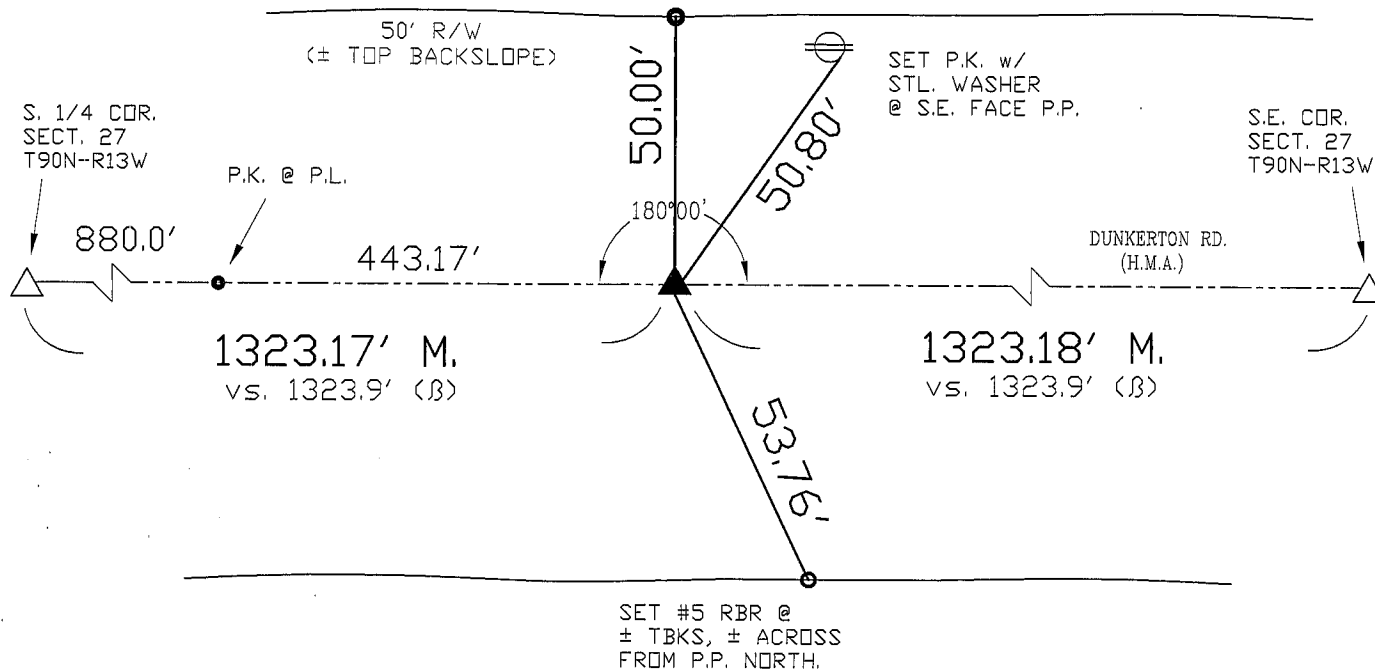
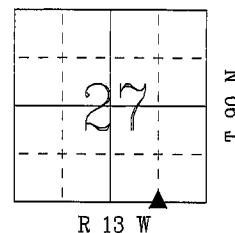
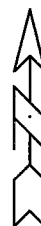
(Show a minimum of three reference ties to durable physical objects, relevant monuments and physical conditions that will enable recovery of the corner.)

NOTES:

- 1.) TIE DIST. PER REFLECTORLESS EDM MEAS. IN "MISSING LINE MEAS." MODE, BEING HORIZ. (H.D.).
- 2.) (8) DENTES "BARBER" COUNTY SURVEYOR RECORD MEASURE, 1909.

PLAN - VIEW

NOT TO SCALE

#5 RBR. w/
YELLOW PLASTIC
CAP #15748 @ R/WFIELD SURVEY: G. TINKER 10/26/2007
PREPARED BY: G. TINKER 10/29/2007

CERTIFICATION



I hereby certify that this land surveying document was prepared and the related survey work was performed by me or under my direct personal supervision and that I am a duly licensed Land Surveyor under the laws of the State of Iowa.

Geoffrey Allen Tinker 10/29/07
Geoffrey Allen Tinker (date)

License Number 15748

My license renewal date is December 31, 2006

Pages or sheets covered by this seal:

This Land Corner Certificate Only.

LIST CORNERS TO BE INDEXED

Corner Section - Township - Range

S.E. COR. 27 90 N 13 W
SW1/4-SE1/4