

Reserved for County Recorder's use.



Doc ID: 009981360001 Type: GEN
Recorded: 10/23/2020 at 03:35:55 PM
Fee Amt: \$7.00 Page 1 of 1
Black Hawk County Iowa
SANDIE L. SMITH RECORDER

File 2021-00008885

Kyle J. Helland, 6109 Chancellor Drive, Cedar Falls, Iowa 50613-6916, (319)-266-0161

UNITED STATES PUBLIC LAND SURVEY CORNER CERTIFICATE
OF

LAND SURVEY MONUMENTS SITUATED IN SECTION NO. 27, TOWNSHIP NO. 90 NORTH, RANGE NO. 13 WEST OF THE FIFTH PRINCIPAL MERIDIAN, BLACK HAWK COUNTY, IOWA.
PREVIOUSLY RECORDED IN DOC. #2008-009162

(SHOW REASON FOR PREPARING THIS CERTIFICATE, THE EVIDENCE AND DETAILED PROCEDURES USED IN ESTABLISHING THE CORNER POSITIONS AND MONUMENTATION FOUND OR PLACED.)

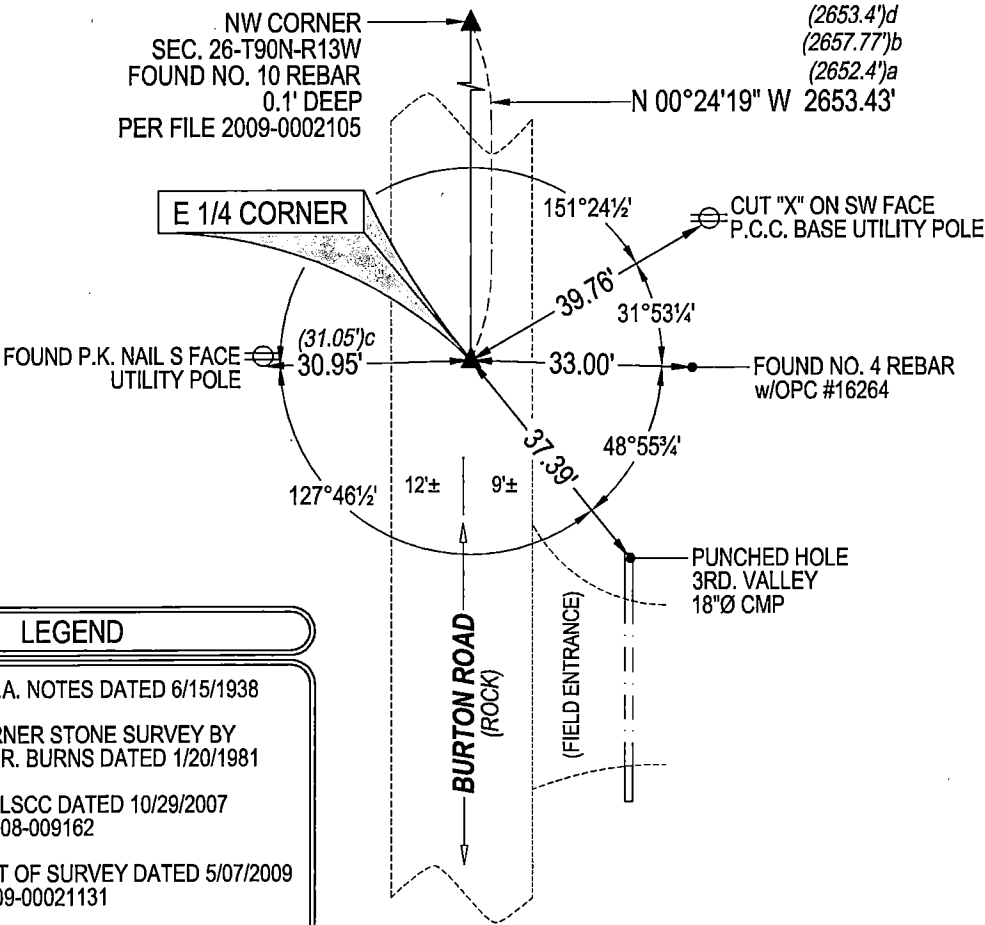
MONUMENT DESCRIPTION AND REMARKS:

ONLY ONE TIE REMAINS. SURVEY COMPLETED IN THE NW 1/4 OF SEC. 26-T90N-R13W.

E 1/4 CORNER: BLACK HAWK COUNTY ENGINEER WPA NOTES DATED 07/15/1938 CALLS FOR [FOUND LIMESTONE 18"x9 1/2"x7 1/2" AND IRON BAR 1"x30" LOWERED EVIDENCE AND SET C.M. ON TOP 12" BELOW GROUND.], USPLSCC DOC. #2008-009162 DATED 10/29/2007 CALLS FOR [FND. #5 REBAR x 24" L. ± ALIGNED w/ 1/4 FENCE LINES WEST AND EAST. TOP 2" BENT OVER @ RD. SURFACE, TEMP REF. AND CUT TOP 3" OFF & RESET TO ±3" DEEP WITH 2"Ø ALUM. CAP STAMPED "BLACK HAWK COUNTY LAND CORNER". MEAS. AGREE'S WITH RECORD, EXCEPT DIST. PER 1981 I.D.O.T. RECORD. SE COR. SECT. TO N. 1/16 CORNER ON E. SIDE SECT. 34 AGREE'S. IDOT TIES CALLS CORNER AS "SET IRON PIN OVER 30" Dp. CONC. M-ON."....] FOUND NO. 5 REBAR w/ALUMINUM CAP STAMPED "BLACK HAWK COUNTY LAND CORNER" PER USPLSCC #2008-009162.

PLAN VIEW

(SHOW A MINIMUM OF THREE REFERENCE TIES TO DURABLE PHYSICAL OBJECTS, RELEVANT MONUMENTS AND PHYSICAL CONDITIONS THAT WILL ENABLE RECOVERY OF THE CORNER.)



LEGEND

- (0.0')a PER W.P.A. NOTES DATED 6/15/1938
- (0.0')b PER CORNER STONE SURVEY BY ROBERT R. BURNS DATED 1/20/1981
- (0.0')c PER USPLSCC DATED 10/29/2007 DOC. #2008-009162
- (0.0')d PER PLAT OF SURVEY DATED 5/07/2009 FILE #2009-00021131

(BEARINGS ARE ASSUMED)



HELLAND ENGINEERING & SURVEYING, LTD.
6109 Chancellor Drive
Cedar Falls, Iowa 50613-6916
(319)-266-0161

BRASS TAG = 4d. NAIL & 13/16"Ø BRASS TAG DRAWN BY: KDA
SHINER = 1"Ø STEEL SHINER w/MASONRY NAIL
OPC = PLASTIC CAP (O=ORANGE, R=RED, Y=YELLOW)
(00') RECORDED AS FILE NAME: 20-205-26.DWG



I hereby certify that this land surveying document was prepared and the related survey work was performed by me or under my direct personal supervision and that I am a duly licensed Professional Land Surveyor under the laws of the State of Iowa.
Kyle J. Helland 10/19/2020
Kyle J. Helland
License Number 23212
My license renewal date is December 31, 2021.
All pages or sheets are covered by this seal except:

LIST CORNERS TO BE INDEXED			
CORNER	SECTION	TOWNSHIP	RANGE
E 1/4 CORNER	27	90N	13W
W 1/4 CORNER	26	90N	13W