

I du
P
Z

Document Number: 2008009162
Date: Oct 29, 2007 4:30:00 pm
Aud Fee: 0.00 Rec Fee: 0.00
Trans Tax: 0.00 Rec Management Fee: 0.00
E-Corn Fee: 0.00 Non-Standard Page Fee: 0.00
Filed for record in Black Hawk County, Iowa
Judith A. McCarthy, County Recorder

PREPARED BY: BLACK HAWK COUNTY ENGINEERS OFFICE PH.# (319) 833-3008 SLSI 9-94
316 E. FIFTH STREET, ROOM 211 WATERLOO, IOWA 50703 FAX.# (319) 833-3139 CERT 12-96

UNITED STATES PUBLIC LAND SURVEY CORNER CERTIFICATE OF
Land Survey Monuments situated in Section 27, Township 90, Range 13, of the Fifth Principal Meridian, BLACK HAWK County, Iowa. Previously recorded in Misc. Book n/a, Page n/a, in County Recorder's Office.

(Show reason for preparing this certificate, the evidence and detailed procedures used in establishing the corner positions and monumentation found or placed.)

Monument Description and Remarks: FND. #5 REBAR x 24" L. ± ALIGNED w/ 1/4 FENCE LINES WEST AND EAST. TOP 2" BENT OVER @ RD. SURFACE, TEMP. REF. AND CUT TOP 3" OFF & RESET TO ±3" DEEP WITH 2"Ø ALUM. CAP STAMPED "BLACK HAWK COUNTY LAND CORNER". MEAS. AGREE'S WITH RECORD, EXCEPT DIST. PER 1981 I.D.O.T. RECORD. S.E. COR. SECT. TO N. 1/16 COR. ON E. SIDE SECT. 34 AGREE'S. IDOT TIES CALLS CORNER AS "SET IRON PIN OVER 30" Dp. CONC. MON.". NO REFUSAL NOTED DURING TEMP. REF. WITH FND. REBAR UTILIZED AS CORNER OF RECORD, & LOC. ± C.L. OF GRAVEL ROAD.

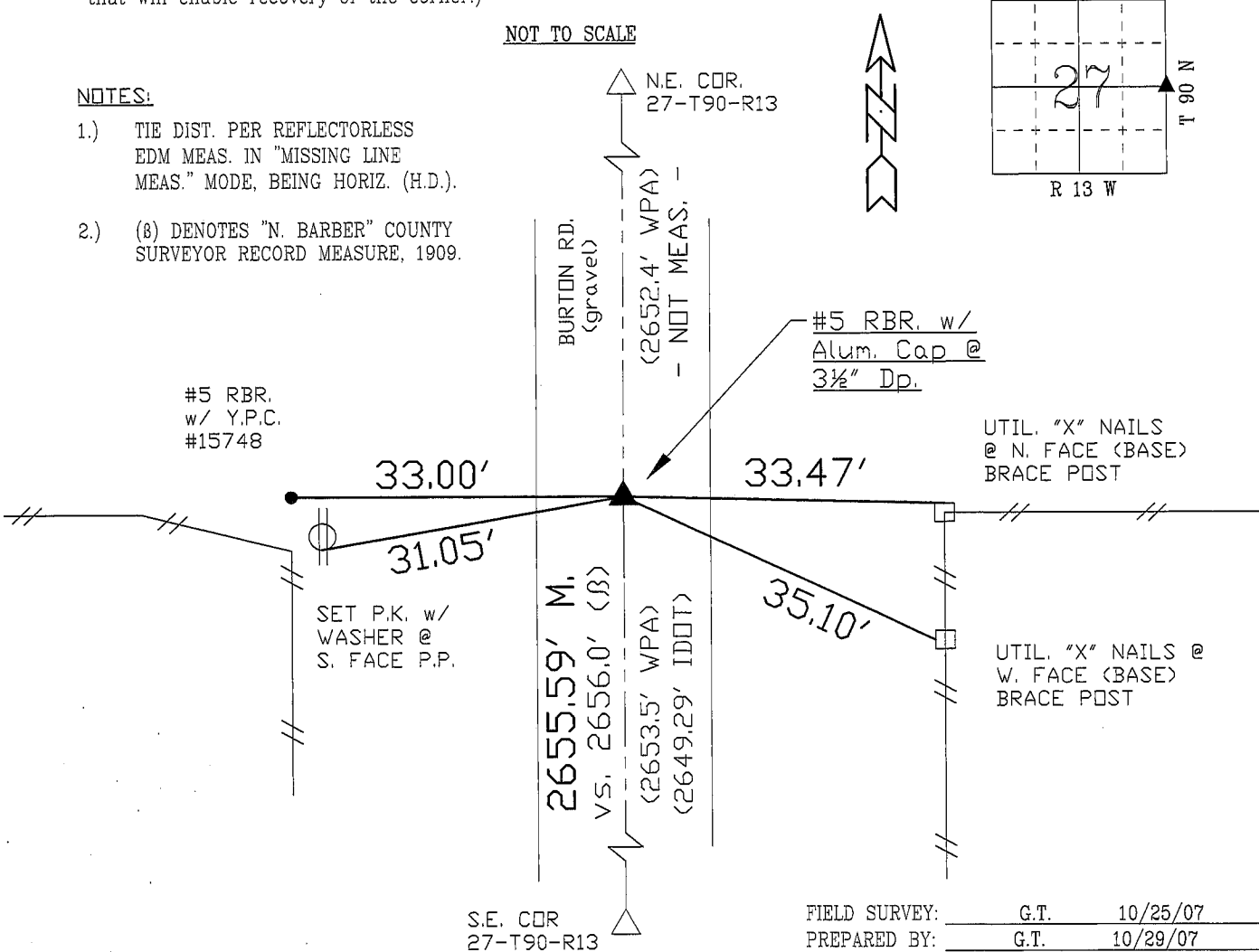
PLAN - VIEW

(Show a minimum of three reference ties to durable physical objects, relevant monuments and physical conditions that will enable recovery of the corner.)

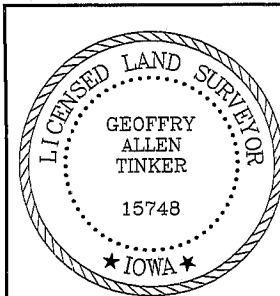
NOT TO SCALE

NOTES:

- 1.) TIE DIST. PER REFLECTORLESS EDM MEAS. IN "MISSING LINE MEAS." MODE, BEING HORIZ. (H.D.).
- 2.) (8) DENOTES "N. BARBER" COUNTY SURVEYOR RECORD MEASURE, 1909.



CERTIFICATION



I hereby certify that this land surveying document was prepared and the related survey work was performed by me or under my direct personal supervision and that I am a duly licensed Land Surveyor under the laws of the State of Iowa.
Geoffrey Allen Tinker 10/29/07 (date)
License Number 15748
My license renewal date is December 31, 2008
Pages or sheets covered by this seal:
This Land Corner Certificate Only.

LIST CORNERS TO BE INDEXED

Corner	Section	Township	Range
E. 1/4	27	90	13
W. 1/4	26	90	13