

I dw
P
Z

Document Number: 2008009160
Date: Oct 29, 2007 4:30:00 pm
Aud Fee: 0.00 Rec Fee: 0.00
Trans Tax: 0.00 Rec Management Fee: 0.00
E-Com Fee: 0.00 Non-Standard Page Fee: 0.00
Filed for record in Black Hawk County, Iowa
Judith A. McCarthy, County Recorder

PREPARED BY: BLACK HAWK COUNTY ENGINEERS OFFICE
316 E. FIFTH STREET, ROOM 211 WATERLOO, IOWA 50703
PH.# (319) 833-3008
FAX.# (319) 833-3139
SLSI 9-94
CERT 12-96

UNITED STATES PUBLIC LAND SURVEY CORNER CERTIFICATE OF
Land Survey Monuments situated in Section 27, Township 90 N, Range 13 W, of the Fifth Principal Meridian, BLACK HAWK County, Iowa. Previously recorded in Misc. Book N/A, Page N/A, in County Recorder's Office.
(Show reason for preparing this certificate, the evidence and detailed procedures used in establishing the corner positions and monumentation found or placed.)

Monument Description and Remarks: SET CENTER OF SECTION BY STD. INTERSECTION OF FOUR 1/4 CORNERS. SET #5 RBR. w/ 2" ALUM. CAP. HIST. CENTER BY "BARBER" (1909) AND "J. BALL" (1867) REFERENCE STONE. EXIST. DATED R.R. R/W CORNER POSTS FOUND, LOCATED RESPECTIVE TO STD. 1/4 INTERSECTION. C.E. 1/16 CORNER (FND. STONE) HELD AS ADDITIONAL SUPPORT OF E/W DIRECTION. EXCAV. 4'Ø x 18" DEEP, NOTHING FND. FROM HIST. RECORD WITHIN ± LOCATION. CORNER EST. ±5.8' WEST OF SPLIT OF EXISTING R.R. BED GRADE, VS. 7' PER R.R. PLAT (vs. 2.1' PER BARBER, 1909).

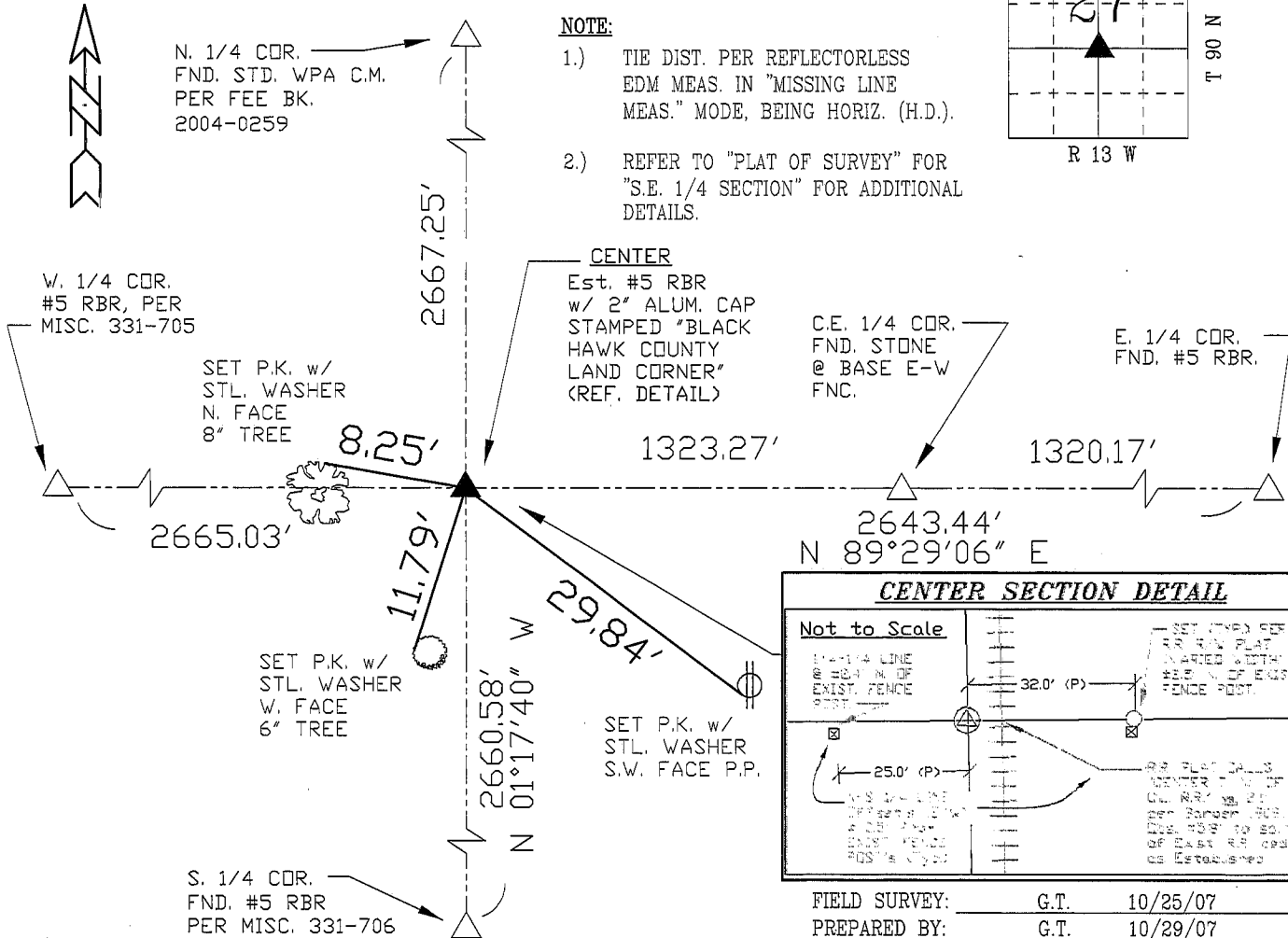
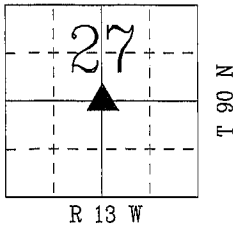
PLAN - VIEW

(Show a minimum of three reference ties to durable physical objects, relevant monuments and physical conditions that will enable recovery of the corner.)

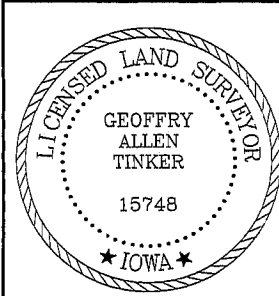
NOT TO SCALE

NOTE:

- 1.) TIE DIST. PER REFLECTORLESS EDM MEAS. IN "MISSING LINE MEAS." MODE, BEING HORIZ. (H.D.).
- 2.) REFER TO "PLAT OF SURVEY" FOR "S.E. 1/4 SECTION" FOR ADDITIONAL DETAILS.



CERTIFICATION



I hereby certify that this land surveying document was prepared and the related survey work was performed by me or under my direct personal supervision and that I am a duly licensed Land Surveyor under the laws of the State of Iowa.
Geoffrey Allen Tinker 10/29/07
Geoffrey Allen Tinker (date)
License Number 15748
My license renewal date is December 31, 2008
Pages or sheets covered by this seal:
This Land Corner Certificate Only.

LIST CORNERS TO BE INDEXED

Corner	Section	Township	Range
CENTER	27	90 N	13 W