

SC  
MISC  
INDEX  
MARGIN  
PROOF  
COMPARE

BLACK HAWK COUNTY IOWA, SS:  
Filed for record MAY 10, 2001 at  
4:00 P.M. and recorded in Book 342  
of MISC at Page 633.

023382

Catherine A. Sess Recorder  
FEE 1-5.00/  
WAYNE CLAASSEN ENGINEERING SLSI 9-90

# UNITED STATES PUBLIC LAND SURVEY CORNER CERTIFICATE

OF

Land Survey Monuments situated in Section 26, Township 90N, Range  
13W, of the Fifth Principal Meridian, BLACK HAWK County, Iowa.  
Previously recorded in N/A in County Recorder's Office.

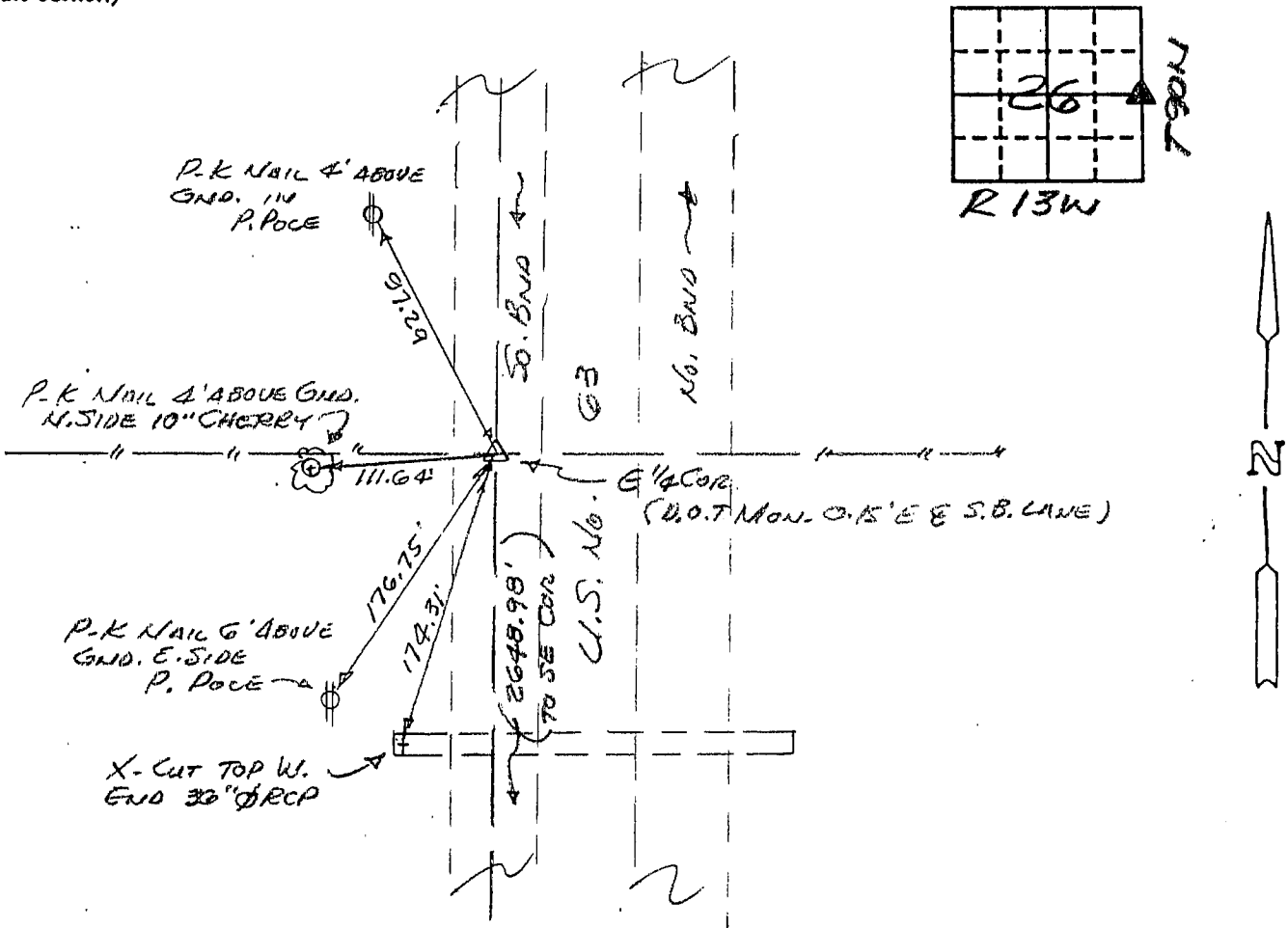
(book, page, document number, etc.)

(Show reason for preparing this certificate, the evidence and detailed procedures used in establishing the corner positions and monumentation found or placed.)

Monument Description and Remarks: FOUND D.O.T. MONUMENT 0.15' EAST OF CENTER  
LINE SOUTHBOUND LANE, U.S. #63 PER D.O.T. TIED CORSTONE SURVEY.

## PLAN - VIEW

(Show a minimum of three reference ties to durable physical objects, relevant monuments and physical conditions that will enable recovery of the corner.)



553-20

I hereby certify that the survey work was completed and this certificate was prepared by me or under my direct personal supervision and that I am a duly registered land surveyor under the laws of the state of Iowa.

Signature: F. William King  
Name typed or printed: F. WILLIAM KING

Date: 5-8-01 Reg. No. 6033

Corners	List Corners to be Indexed Section	Twp	Range
E 1/4	26	90N	13W

SEAL

