

UNITED STATES PUBLIC LAND SURVEY
CORNER CERTIFICATE OF

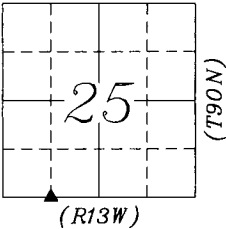
LAND SURVEY SITUATED IN:	Section 25, Township 90 North, Range 13 West, of the Fifth Principal Meridian, Black Hawk County, Iowa.
PREVIOUSLY RECORDED IN BOOK:	
INSTRUMENT #:	2017-00000825
FIELD WORK COMPLETED:	8/5/2021
SURVEY PREPARED BY: RESPOND TO:	CLAPSADDLE-GARBER ASSOCIATES, INC, 5106 NORDIC DR. CEDAR FALLS, IA 50613 PHONE 319-266-0258 TSTEWART@CGACONSULTANTS.COM



Doc ID: 010375310001 Type: GEN
Recorded: 01/26/2022 at 04:45:30 PM
Fee Amt: \$0.00 Page 1 of 1
Black Hawk County Iowa
SANDIE L. SMITH RECORDER

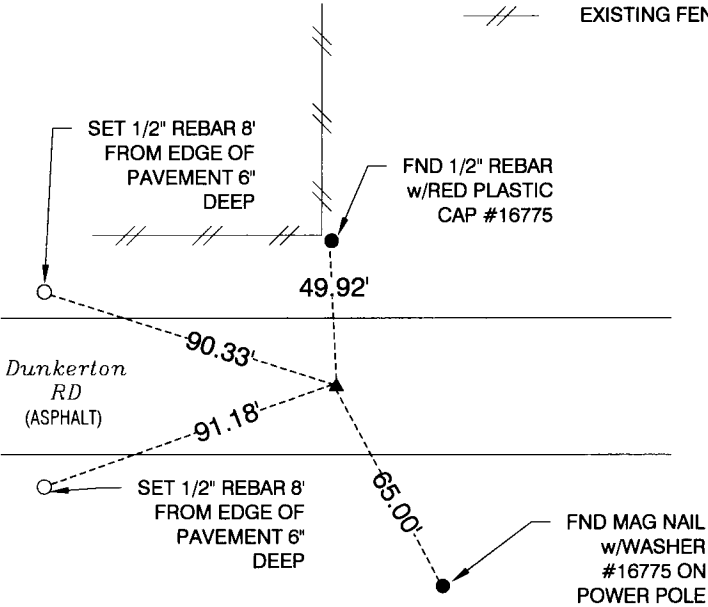
File 2022-00015287

THIS CERTIFICATE WAS PREPARED TO PERPETUATE MONUMENTATION AFTER BLACK HAWK COUNTY HMA RESURFACING AS A PART OF PROJECT STBG-SWAP-C007(159)--FG-07. CORNERS WERE SET USING METHODS DESCRIBED BELOW.



PLAN-VIEW
NO SCALE

- LEGEND:
- ▲ GOVERNMENT CORNER MONUMENT FOUND
 - △ GOVERNMENT CORNER MONUMENT SET
 - 1/2" x 30" REBAR SET
 - PARCEL OR LOT CORNER MONUMENT FOUND
 - /// EXISTING FENCE



SOUTHEAST CORNER
SW1/4 - SW1/4
SECTION 25-90-13

FND MAG NAIL WITH WASHER #16775
PRIOR TO PROJECT CONSTRUCTION,
RESET MAG SPIKE AFTER
CONSTRUCTION WAS COMPLETE

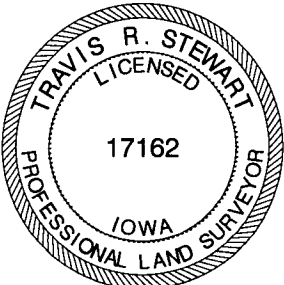


Clapsaddle-Garber Associates, Inc
5106 Nordic Drive
Cedar Falls, Iowa 50613
Ph 319-266-0258
www.cgaconsultants.com

DRAWN KVL	SHEET NO. 1
DATE 01-17-2022	PROJECT NO. 78321.05

List Corners to be Indexed

Corners	Section	Township	Range
SE CORNER SW1/4 - SW1/4	25	90N	13W
NE CORNER NW1/4 - NW1/4	36	90N	13W



I hereby certify that this land surveying document was prepared and the related survey work was performed by me or under my direct personal supervision and that I am a duly Licensed Professional Land Surveyor under the laws of the State of Iowa.
Travis R. Stewart 1/21/2022
Travis R. Stewart, PLS Date
Iowa License Number 17162
My License Renewal Date is December 31, 2023
Pages or sheets covered by this seal: THIS SHEET