



Doc ID: 007078550001 Type: GEN  
Recorded: 07/14/2016 at 10:16:36 AM  
Fee Amt: \$7.00 Page 1 of 1  
Black Hawk County Iowa  
SANDIE L. SMITH RECORDER

File 2017-00000825

WAYNE CLAASSEN ENGINEERING AND SURVEYING, INC.  
P.O. BOX 898 WATERLOO, IOWA 50704-0898

PHONE: (VOICE) 319-235-6294  
(FAX) 319-235-0028

# UNITED STATES PUBLIC LAND SURVEY CORNER CERTIFICATE

Land Survey Monuments situated in Section 25, Township 90 North, Range 13 West, of the Fifth Principal Meridian, Black Hawk County, Iowa.

Previously recorded in \_\_\_\_\_ in County Recorder's Office.  
(book, page, document number, etc.)

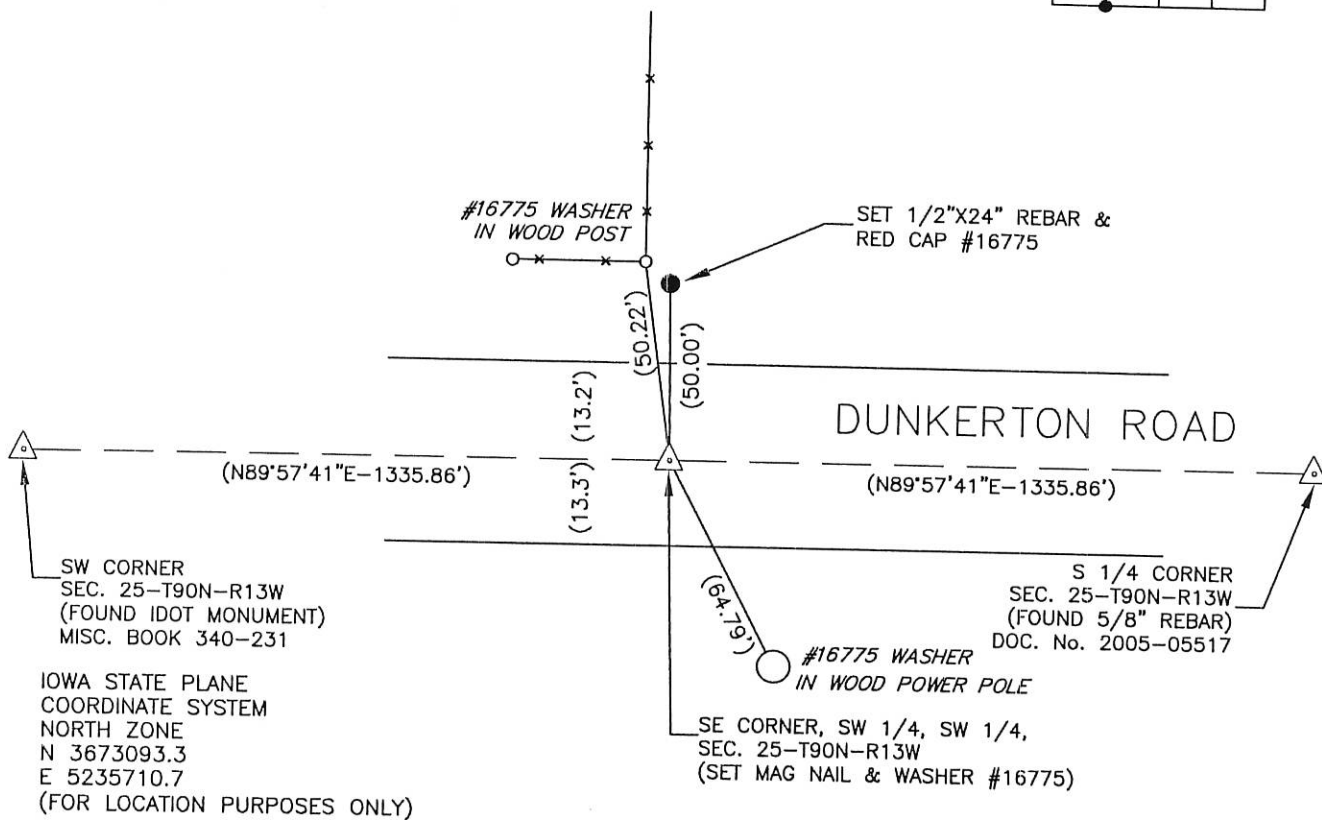
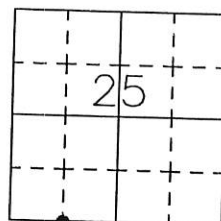
## Monument Description and Remarks

Went to location of corner and set Mag nail and washer #16775 at mid point between SW corner and S 1/4 corner.

## PLAN - VIEW

### Reason for filing certificate:

- ☒ There is no certificate on file with the Recorder's Office.
- ☐ Accepts corner position which differs from the one shown in above document.
- ☐ The corner monument was replaced or modified.
- ☐ The reference ties in above document were missing.



720-58

I hereby certify that this land surveying document was prepared and the related survey work was performed by me or under my direct personal supervision and that I am a duly Licensed Land Surveyor under the laws of the State of Iowa.

Signature: \_\_\_\_\_

David L. Scheil, L.S.

Date: July 07, 2016 Lic. No. 16775

Pages or Sheets Covered by this Seal: THIS SHEET ONLY.

My license renewal date is December 31, 2016

SEAL

### List Corners to be Indexed

Corners	Section	Twp	Range
SE CORNER, SW 1/4, SW 1/4,	25	90 N	13 W

NE CORNER, NW 1/4, NW 1/4, *	25	90 N	13 W
------------------------------	----	------	------

