



Doc ID: 010299770001 Type: GEN
Recorded: 10/22/2021 at 12:50:30 PM
Fee Amt: \$7.00 Page 1 of 1
Black Hawk County Iowa
SANDIE L. SMITH RECORDER

File **2022-00008762**

Reserved for County Recorder's use.

Kyle J. Helland, 6109 Chancellor Drive, Cedar Falls, Iowa 50613-6916, (319)-266-0161

UNITED STATES PUBLIC LAND SURVEY CORNER CERTIFICATE OF

LAND SURVEY MONUMENTS SITUATED IN SECTION NO. 25, TOWNSHIP NO. 90 NORTH, RANGE
NO. 13 WEST OF THE FIFTH PRINCIPAL MERIDIAN, BLACK HAWK COUNTY, IOWA.
PREVIOUSLY RECORDED IN N/A

(SHOW REASON FOR PREPARING THIS CERTIFICATE, THE EVIDENCE AND DETAILED PROCEDURES USED IN ESTABLISHING THE
CORNER POSITIONS AND MONUMENTATION FOUND OR PLACED.)

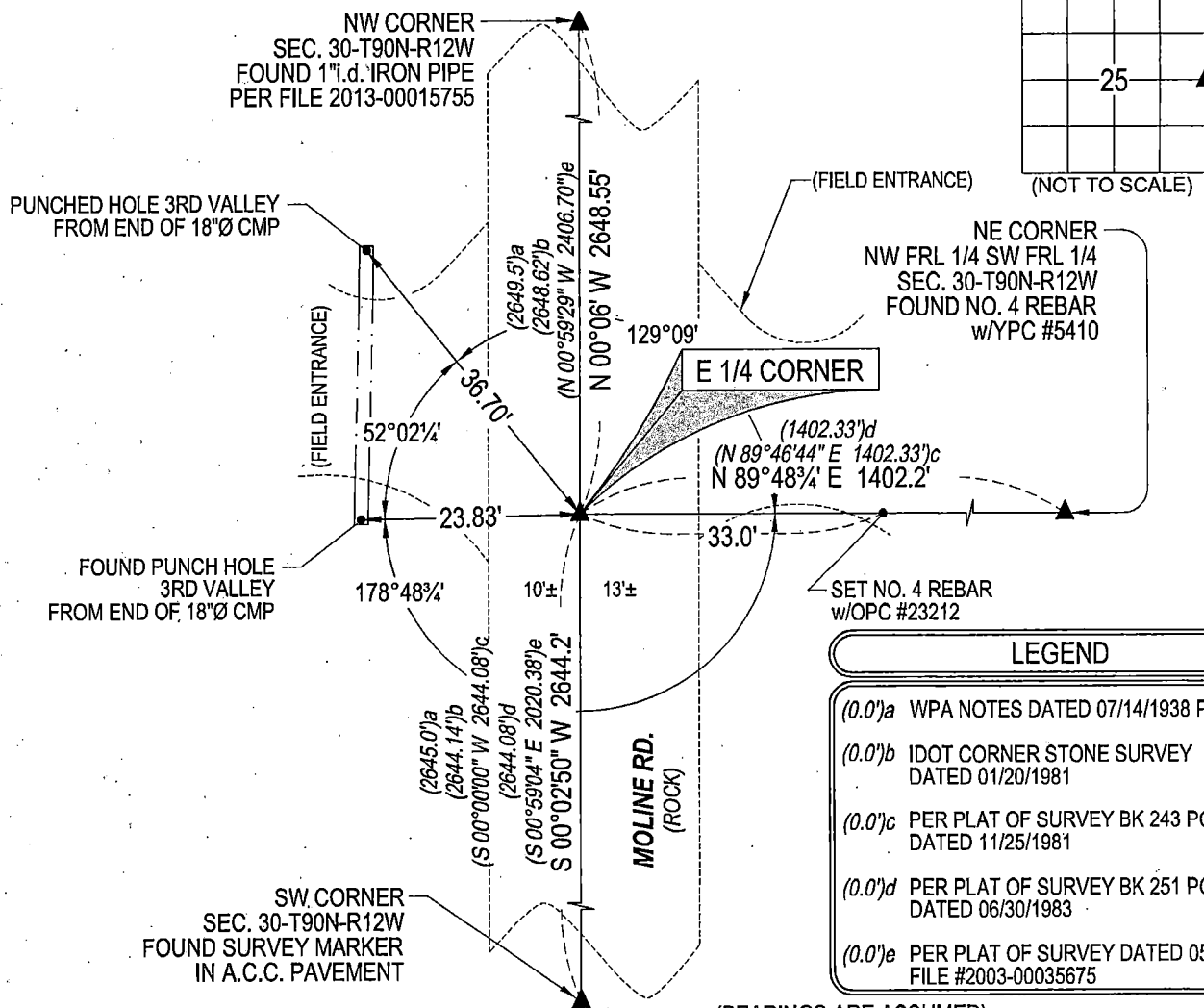
MONUMENT DESCRIPTION AND REMARKS:

NO USPLSCC ON FILE. SURVEY COMPLETED IN THE NW FRL 1/4 & SW FRL 1/4 OF SEC. 30-T90N-R12W.

— **E 1/4 CORNER:** WPA NOTES PAGE 17 DATED 07/14/1938 CALLS FOR [FOUND LIME STONE 17" X 6" X 3" AND IRON PIPE 30" LONG. LOWERED EVIDENCE AND SET C.M. ON TOP 12" BELOW GROUND.]. BLACK HAWK COUNTY REFERENCE TIES DATED 07/1965 CALLS FOR [MON. 12" DEEP, FOUND IRON PIPE]. IDOT CORNER STONE SURVEY F-63-6(39)-20-07 DATED 01/20/1981 CALLS FOR [FOUND PINCHED PIPE 4" DEEP]. SEARCHED WITH MAGNETIC DETECTOR, EXCAVATED, AND FOUND 1"o.d. OPEN PIPE WITH DAMAGED TOP 0.1' DEEP. UTILIZED SAID FOUND PIPE AS CORNER.

PLAN VIEW

(SHOW A MINIMUM OF THREE REFERENCE TIES TO DURABLE PHYSICAL OBJECTS, RELEVANT MONUMENTS AND PHYSICAL CONDITIONS THAT WILL ENABLE RECOVERY OF THE CORNER.)



(BEARINGS ARE ASSUMED)



HELLAND ENGINEERING & SURVEYING, LTD.

6109 Chancellor Drive
Cedar Falls, Iowa 50613-6916
(319)-266-0161

BRASS TAG = 4d. NAIL & 13/16"Ø BRASS TAG DRAWN BY: KDA
SHINER = 1"Ø STEEL SHINER w/MASONRY NAIL
OPC = PLASTIC CAP (O=ORANGE, R=RED, Y=YELLOW)
(00') RECORDED AS FILE NAME: 21-227-26.DWG



I hereby certify that this land surveying document was prepared
and the related survey work was performed by me or under my
direct personal supervision and that I am a duly licensed
Professional Land Surveyor under the laws of the State of Iowa.

Kyle J. Helland
License Number 23212
My license renewal date is December 31, 2021.
All pages or sheets are covered by this seal except:

LIST CORNERS TO BE INDEXED

CORNER	SECTION	TOWNSHIP	RANGE
E 1/4 CORNER	25	90N	13W
W 1/4 CORNER	30	90N	12W