

PRANGE SURVEYING

Prepared by Dennis R. Prange, L.S., Prange Surveying, 3304 Panther Lane, Cedar Falls, Iowa 50613, (319) 277-4935

UNITED STATES PUBLIC LAND SURVEY CORNER CERTIFICATE
OF

Land Survey Monuments situated in Section No. 25, Township No. 90 North, Range
No. 13 West, of the Fifth Principal Meridian, Black Hawk County, Iowa.

Previously recorded in Book N/A on Page N/A in the office of the County Recorder.
(book, page, document number, etc.)

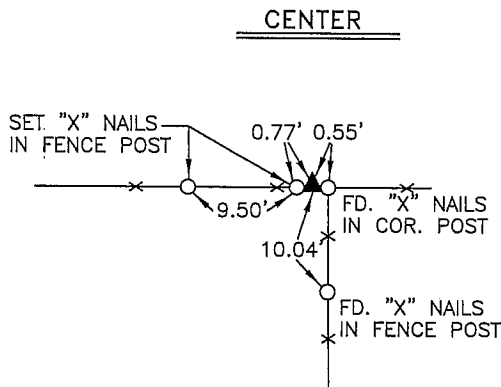
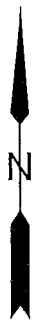
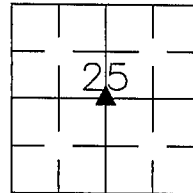
(Show reason for preparing this certificate, the evidence and detailed procedures used in establishing the corner positions and
monumentation found or placed.)

Monument Description and Remarks: Center Section 25-90-13 - Found Bolt 6" deep.
Iowa D.O.T. Section Corner Survey indicates that a bolt was set over a found stone.

PLAN - VIEW

(Show a minimum of three reference ties to durable physical objects, relevant monuments and physical conditions that will enable
recovery of the corner.)

NOT TO SCALE

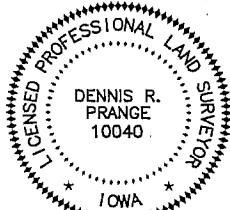


I hereby certify that this land surveying document was prepared
by me or under my direct personal supervision and that I am
a duly licensed Professional Land Surveyor under the laws of
the State of Iowa.

Signed: *Dennis R. Prange*
Dennis R. Prange, L.S. Iowa License No. 10040

Date: December 8, 2005

SEAL



My License renewal date is December 31, 2006.
Pages or sheets covered by this seal : this page only

Corners	List Corners to be Indexed Section	Twp	Range
CENTER	25	90	13

Drawn by: DRP

Checked by: