

SC
MISC
INDEX *SW*
MARGIN
PROOF *on*
COMPARE

BLACK HAWK COUNTY IOWA:SS
Filed for record DEC 11, 2000 at
1:30 P.M. and recorded in Book 341
of MISC Page 293

012126

Steve J. Busse Recorder

Fee 1-5.00/
BUSSE SURVEYING INC
PO BOX 241 ALLISON IA 50602

STEVE BUSSE P.O. BOX 241 508 ELM STREET ALLISON, IOWA 50602 319-267-2519

UNITED STATES PUBLIC LAND SURVEY CORNER CERTIFICATE

Land Survey Monuments situated in Section 24, Township 90 North, Range
13 West, of the Fifth Principal Meridian, Black Hawk County, Iowa.

Previously recorded in _____ in County Recorder's Office.
(book, page, document number, etc.)

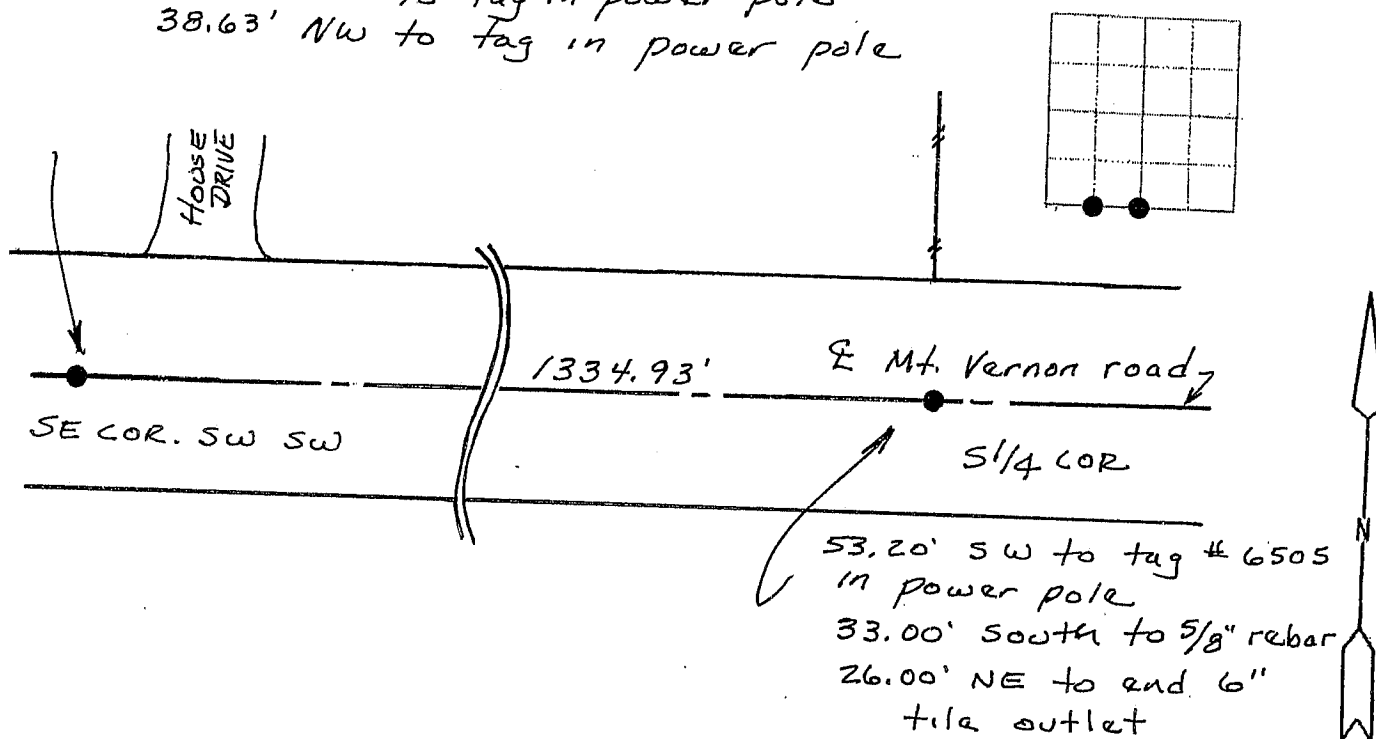
(Show reason for preparing this certificate, the evidence and detailed procedures used in establishing the corner positions and monumentation found or placed.)

Monument Description and Remarks: Found pin with cap #6505 at SE corner
SW 1/4 SW 1/4 as shown in survey recorded in book 302 page 380
Found flat steel bar at South 1/4 corner. Bar is on fence line
to north. Bar was painted pink.

PLAN - VIEW

(Show a minimum of three reference ties to durable physical objects, relevant monuments and physical conditions that will enable recovery of the corner)

59.95' NW to pin/cap #6505
55.65' SW to tag in power pole
38.63' NW to tag in power pole



I hereby certify that the survey work was completed and this land surveying document was prepared by me or under my direct personal supervision and that I am a duly licensed land surveyor under the laws of the state of Iowa

Signature: *Steve J. Busse*
Name typed or printed: STEVE J. BUSSE

Date: 12/4/2001 Reg. No. 9018

My license renewal date is December 31, 2002

SEAL

Corners	Section	Twp	Range
S 1/4 COR.	24	90	13
SE COR SW SW	24	90	13