

SC
MISC
INDEX
MARGIN
PROOF
COMPARE

BLACK HAWK COUNTY IOWA:SS
Filed for record DEC 11, 2000 at
1:30 P.M. and recorded in Book 341
of MISC Page 292

012125

Christina S. Busse Recorder

Fee 1-5.00/

BUSSE SURVEYING INC

PO BOX 241 ALLISON IA 50602

ALLISON, IOWA 50602

319-267-2519

STEVE BUSSE

P.O. BOX 241

508 ELM STREET

UNITED STATES PUBLIC LAND SURVEY CORNER CERTIFICATE

Land Survey Monuments situated in Section 24, Township 90 North, Range
13 west, of the Fifth Principal Meridian, Black Hawk County, Iowa.

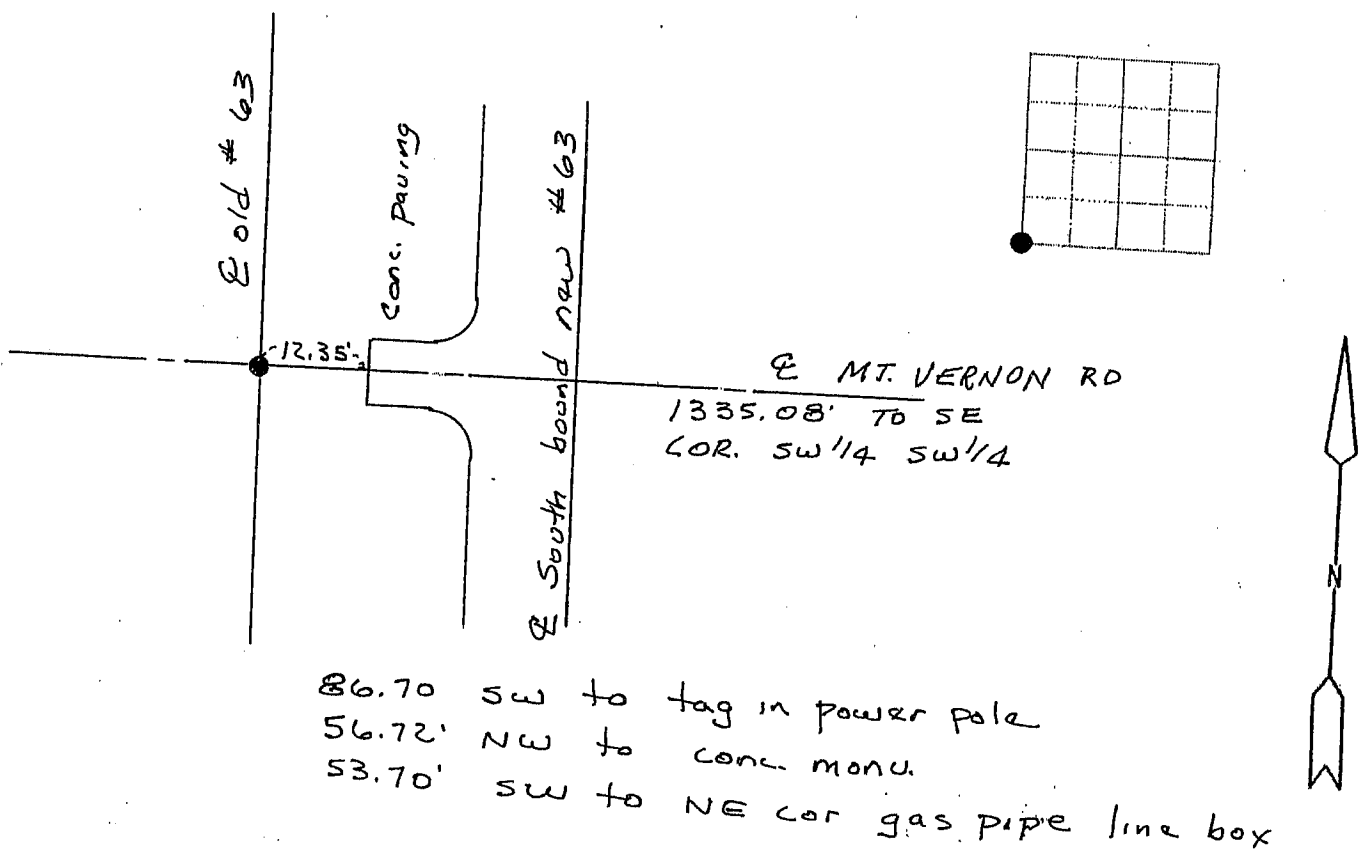
Previously recorded in _____ in County Recorder's Office.
(book, page, document number, etc.)

(Show reason for preparing this certificate, the evidence and detailed procedures used in establishing the corner positions and monumentation found or placed.)

Monument Description and Remarks: Found nail at iron pin in E old
Highway #63.

PLAN - VIEW

(Show a minimum of three reference ties to durable physical objects, relevant monuments and physical conditions that will enable recovery of the corner)



I hereby certify that the survey work was completed and this land surveying document was prepared by me or under my direct personal supervision and that I am a duly licensed land surveyor under the laws of the state of Iowa

Signature: *Steve Busse*
Name typed or printed: STEVE BUSSE

Date: 12/4/00 Reg. No. 9018

My license renewal date is December 31, 2002

SEAL

Corners	List Corners to be Indexed	Section	Twp	Range
SW COR.	24	90	13	